

- 70.0 MHz IF SAW Filter / 8.66 MHz Bandwidth
- Revision 1: 29 Oct. 2007

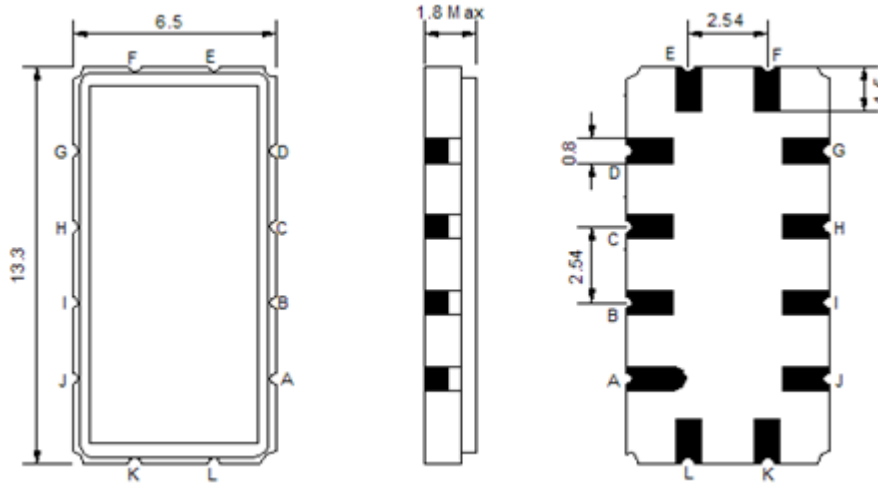
## Electrical Characteristics

MAXIMUM RATING				
PARAMETERS DESCRIPTION	UNIT	MINIMUM	TYPICAL	MAXIMUM
Operation Temperature Range	°C	-40	-	85
Storage Temperature Range	°C	-40	-	85
Maximum DC Voltage	V	-	-	10
Maximum Input Power	dBm	-	-	10
Source Impedance (single ended) <sup>(1)</sup>	Ω	-	50	-
Load Impedance (single ended) <sup>(1)</sup>	Ω	-	50	-
Package type & size	V			
Length x Width	mm <sup>2</sup>	-	13.3 x 6.5	-
Height	mm	-	-	1.8

ELECTRICAL SPECIFICATION				
PARAMETERS DESCRIPTION	UNIT	MINIMUM	TYPICAL	MAXIMUM
Center Frequency (Fo)	MHz	69.8	70.0	70.2
Insertion Loss at Fo	dB	-	10.7	11.5
Temperature Coefficient	ppm/°C	-	-84	-
Amplitude Ripple Variation at fo ± 3.7 MHz	dB <sub>p-p</sub>	-	0.6	1.0
Group Delay Variation at fo ± 3.7 MHz	nsec	-	125	160
Absolute Delay at Fo	μsec	-	0.94	-
IN/OUT Return Loss at Fo	dB	-	-	-
Bandwidth at -1.0 dB	MHz	8.4	8.66	-
Bandwidth at -3.0 dB	MHz	9.0	9.31	-
Bandwidth at -35.0 dB	MHz	-	11.70	13.0
Relative Attenuation:				
10 ~ 64 MHz	dB	40	46	-
77 ~ 140 MHz	dB	40	42	-

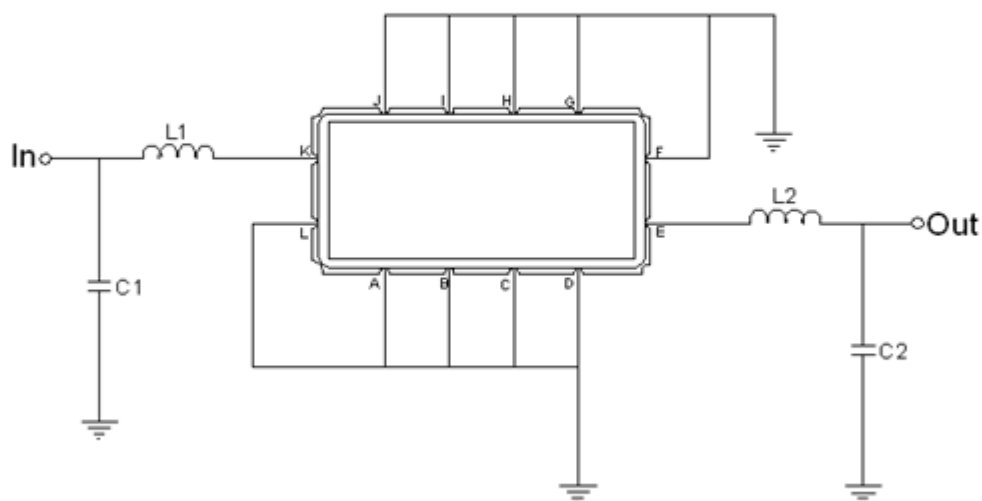
**Notes :** (1) With Matching Network (Ref. Testing Environment Circuit as shown below).  
Those impedances could be modified with different impedance values and/or structures, if necessary.

## Package Dimensions



Pin Description	
A, B, C, D, F, G, H, I, J, L	Ground
K	Input
E	Output

## Testing Environment



Test Fixture & Values	
Input	L1=220nH Q >40 , C1=36pF
Output	L2=220nH Q.>40 , C2=68pF
Source/Load Impedance	50 Ω

**Frequency Characteristics**

**Frequency Response**

