

- 62.5 MHz IF SAW Filter / 20.5 MHz Bandwidth
- Revision 1: 29 Oct. 2007

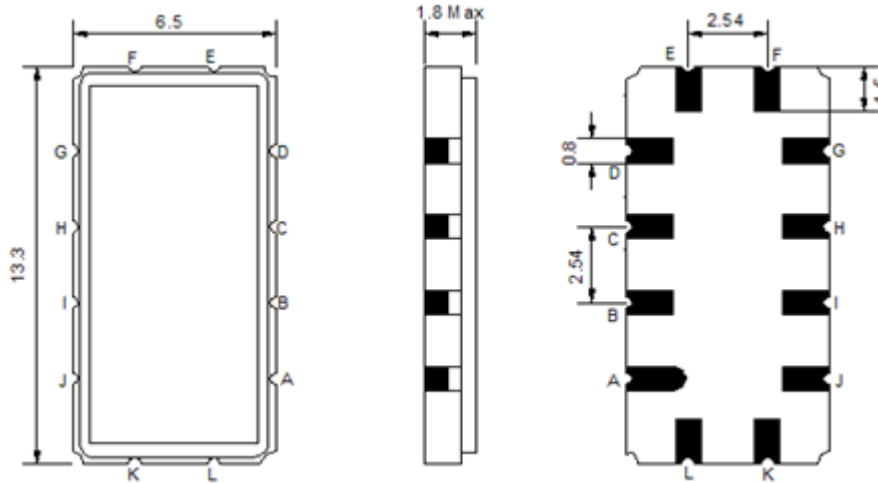
Electrical Characteristics

MAXIMUM RATING				
PARAMETERS DESCRIPTION	UNIT	MINIMUM	TYPICAL	MAXIMUM
Operation Temperature Range	°C	-30	-	80
Storage Temperature Range	°C	-40	-	85
Maximum DC Voltage	V	-	-	10
Maximum Input Power	dBm	-	-	10
Source Impedance (single ended) ⁽¹⁾	Ω	-	50	-
Load Impedance (single ended) ⁽¹⁾	Ω	-	50	-
Package type & size	V			
Length x Width	mm ²	-	13.3 x 6.5	-
Height	mm	-	-	1.8

ELECTRICAL SPECIFICATION				
PARAMETERS DESCRIPTION	UNIT	MINIMUM	TYPICAL	MAXIMUM
Center Frequency (Fo)	MHz	-	62.50	-
Insertion Loss at Fo	dB	-	14.2	15.5
Group Delay Variation at Fo±9.75MHz	nsec	-	35	50
Absolute Delay at Fo	usec	-	1.12	-
Passband Ripple Variation	dB	-	0.3	1.0
Bandwidth at -1dB	MHz	20	20.5	-
Bandwidth at -3dB	MHz	21	21.3	-
Bandwidth at -38dB	MHz	-	24.3	25
Ultimate Rejection	dB	40	45	-

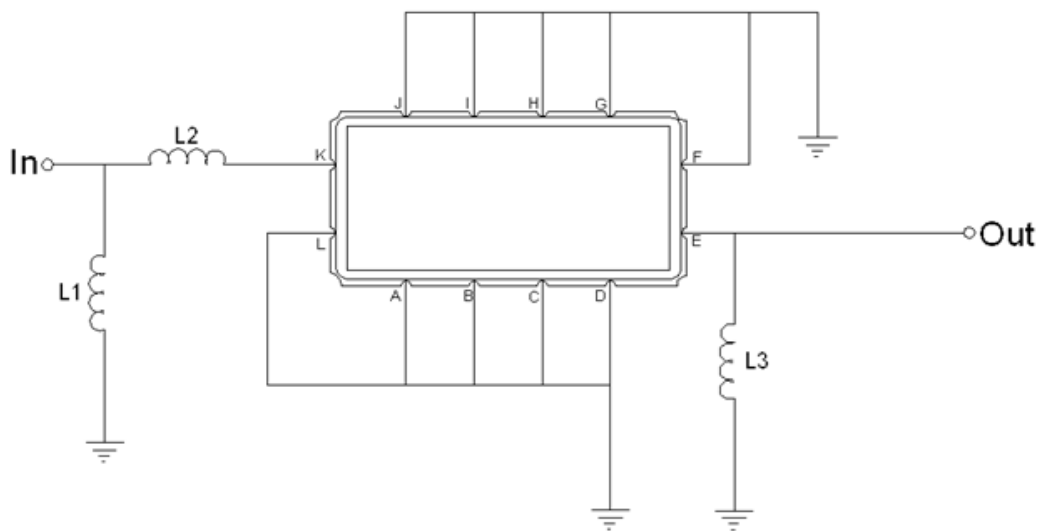
Notes : (1) With Matching Network (Ref. Testing Environment Circuit as shown below).
Those impedances could be modified with different impedance values and/or structures, if necessary.

Package Dimensions



Pin Description	
A, B, C, D, F, G, H, I, J, L	Ground
K	Input
E	Output

Testing Environment



Test Fixture & Values	
Input	L1 = 120 nH , L2 = 27 nH
Output	L3 = 100 nH
Source/Load Impedance	50 Ω

Frequency Characteristics

Frequency Response

