

- 60.00 MHz IF SAW Filter / 12.0 MHz Bandwidth
- Revision 1: 15 Nov. 2007

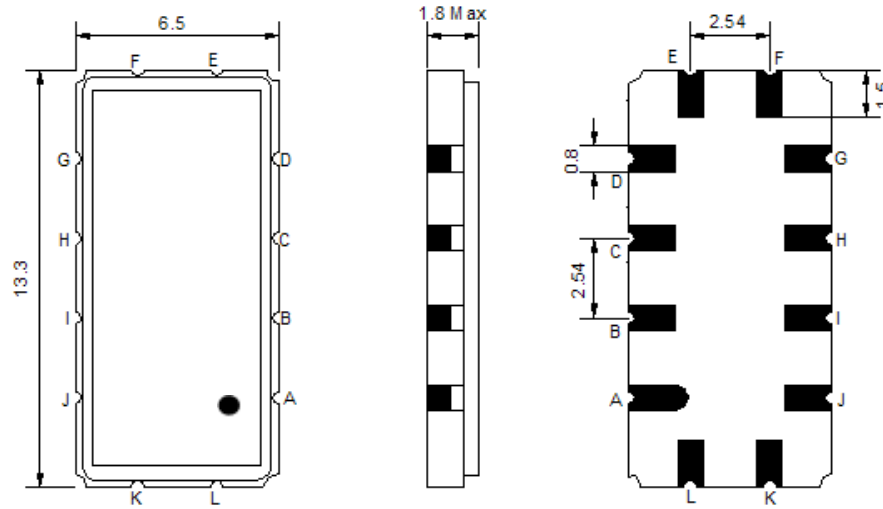
Electrical Characteristics

MAXIMUM RATING				
PARAMETERS DESCRIPTION	UNIT	MINIMUM	TYPICAL	MAXIMUM
Operating Temperature Range	°C	-30	-	80
Storage Temperature Range	°C	-40	-	85
Maximum DC Voltage	V	-	-	10
Maximum Input Power	dBm	-	-	10
Source Impedance (single ended) ⁽¹⁾	Ω	-	50	-
Load Impedance (single ended) ⁽¹⁾	Ω	-	50	-
Package type & size	V			
Length x Width	mm ²	-	13.3 x 6.5	-
Height	mm	-	-	1.8

ELECTRICAL SPECIFICATION				
PARAMETERS DESCRIPTION	UNIT	MINIMUM	TYPICAL	MAXIMUM
Center Frequency (Fo)	MHz	-	60.0	-
Insertion Loss at Fo	dB	-	11.8	13.0
Amplitude Ripple Variation at Fo±5.0MHz	dB _{p-p}	-	0.4	1.0
Group Delay Variation at Fo±5.0MHz	nsec	-	38	70
Absolute Delay at Fo	µsec	-	1.1	-
Temperature Coefficient	ppm/°C	-	-94	-
Bandwidth at -1.0 dB	MHz	10.0	12.0	-
Bandwidth at -3.0 dB	MHz	-	12.7	-
Bandwidth at -40.0 dB	MHz	-	15.3	17.0
Relative Attenuation (ref: Max IL)				
Fo±9.75 MHz	dB	40	45	
Fo±10 MHz	dB	40	48	
Fo±20 MHz	dB	45	55	
DC ~ 45.25MHz	dB	40	45	-
74.75 ~ 120MHz	dB	40	45	-
VSWR (55.0 ~ 65.0MHz)	dB	-	3.0	4.5

Notes : (1) With Matching Network (Ref. Testing Environment Circuit as shown below).
Those impedances could be modified with different impedance values and/or structures, if necessary.

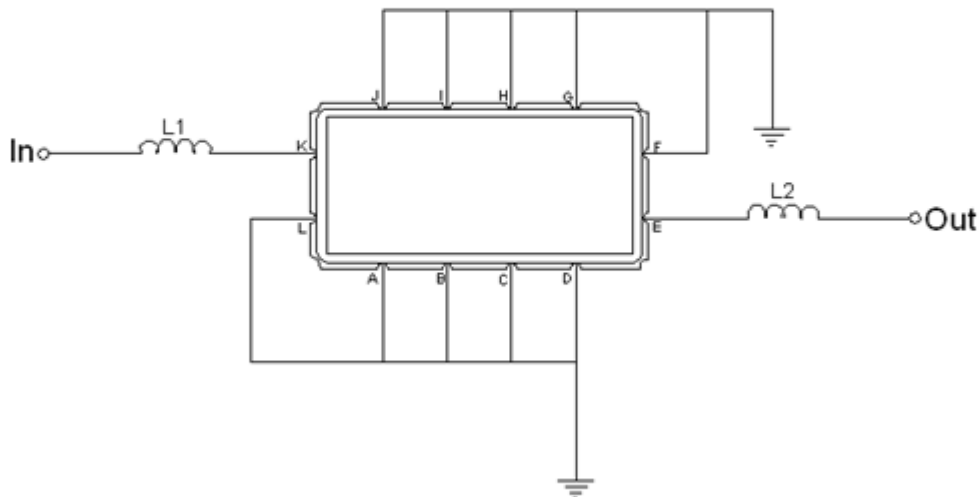
Package Dimensions



- ① **TRANSKO:** Brand
- ② **TL6011:** Model Name
- ③ **X :** Date Code (Year)
- ④ **Y :** Date Code (Month)
- ⑤ **Z :** Date Code (Date)
- : Index Dot

Pin Description	
A, B, C, D, F, G, H, I, J, L	Ground
K	Input
E	Output

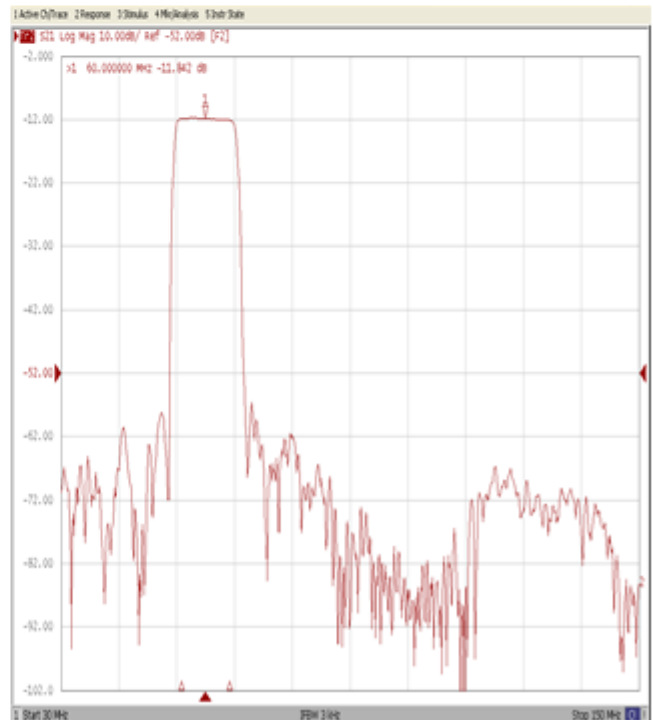
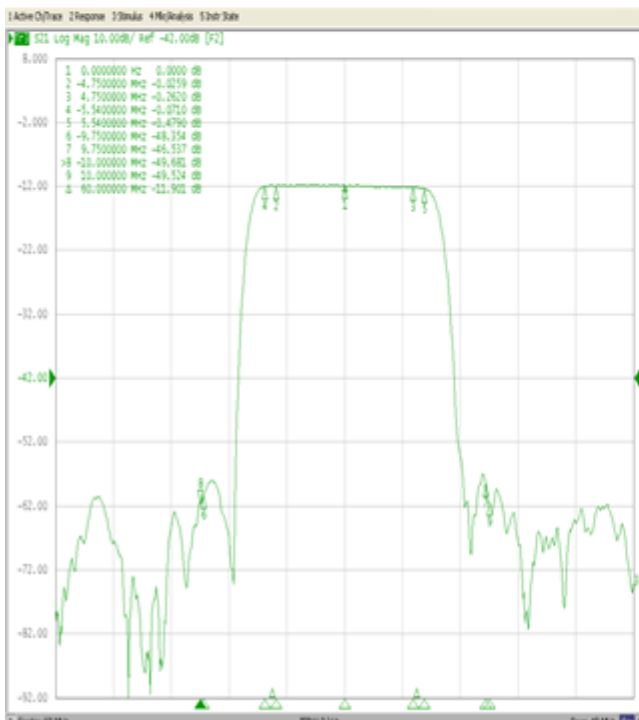
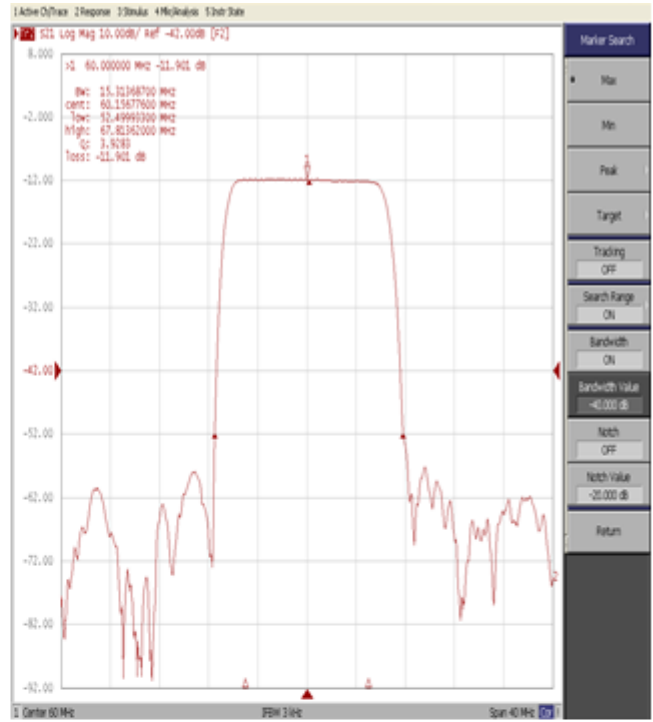
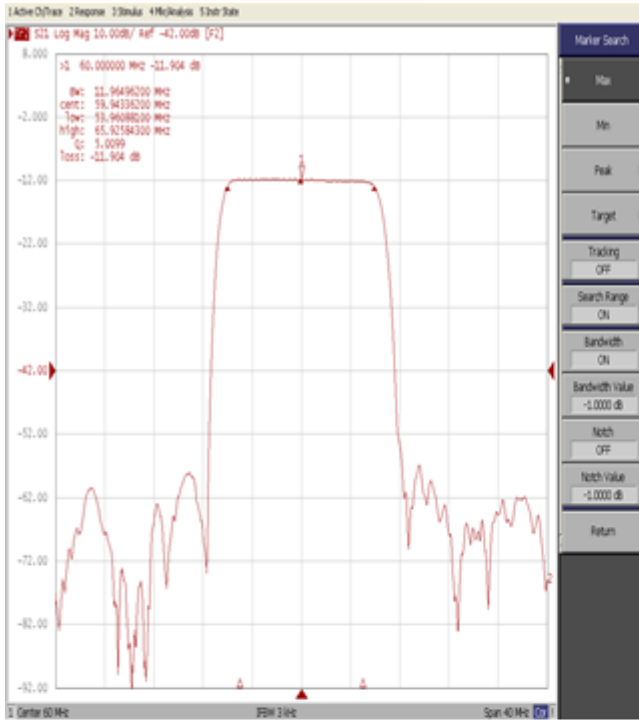
Testing Environment



Test Fixture & Values	
Input	L1=270 nH , Q>40
Output	L2=220 nH , Q>40
Source/Load Impedance	50 Ω

Frequency Characteristics

Frequency Response



Frequency Response

