

- 380.00 MHz IF SAW Filter / 10.65 MHz Bandwidth
- Revision 1: 19 Sep. 2008

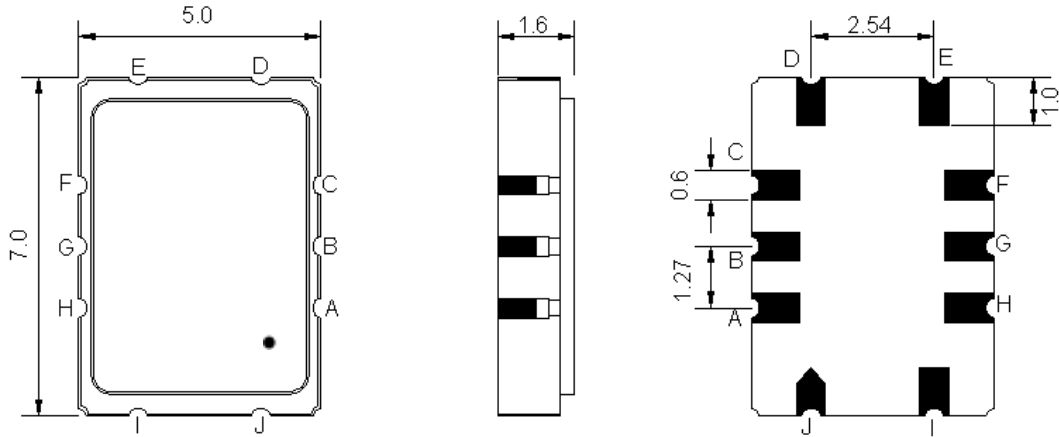
## Electrical Characteristics

MAXIMUM RATING				
PARAMETERS DESCRIPTION	UNIT	MINIMUM	TYPICAL	MAXIMUM
Operating Temperature Range	°C	-40	-	+85
Storage Temperature Range	°C	-40	-	+85
Maximum DC Voltage	V	-	-	10
Maximum Input Power	dBm	-	-	10
Source Impedance (single ended) <sup>(1)</sup>	Ω	-	50	-
Load Impedance (single ended) <sup>(1)</sup>	Ω	-	50	-
Package type & size	S			
Length x Width	mm <sup>2</sup>	-	7.0 x 5.0	-
Height	mm	-	-	1.6

ELECTRICAL SPECIFICATION				
PARAMETERS DESCRIPTION	UNIT	MINIMUM	TYPICAL	MAXIMUM
Center Frequency (Fo)	MHz	-	380.00	-
Insertion Loss at Fo	dB	-	8.50	10.00
Amplitude Ripple Variation (Fo ± 1.5 MHz)	dB <sub>p-p</sub>	-	0.90	1.50
Group Delay Variation (Fo ± 1.5 MHz)	nsec	-	75	120
Absolute Delay at Fo	µsec	-	0.36	-
Temperature Coefficient	ppm/°C	-	-86	-
Bandwidth at -3.0 dB	MHz	-	13.90	-
Bandwidth at -40.0 dB	MHz	-	22.60	24.00
Attenuation (Fo + 140MHz)	dB	50	55	-

**Notes :** (1) With Matching Network (Ref. Testing Environment Circuit as shown below).  
Those impedances could be modified with different impedance values and/or structures, if necessary.

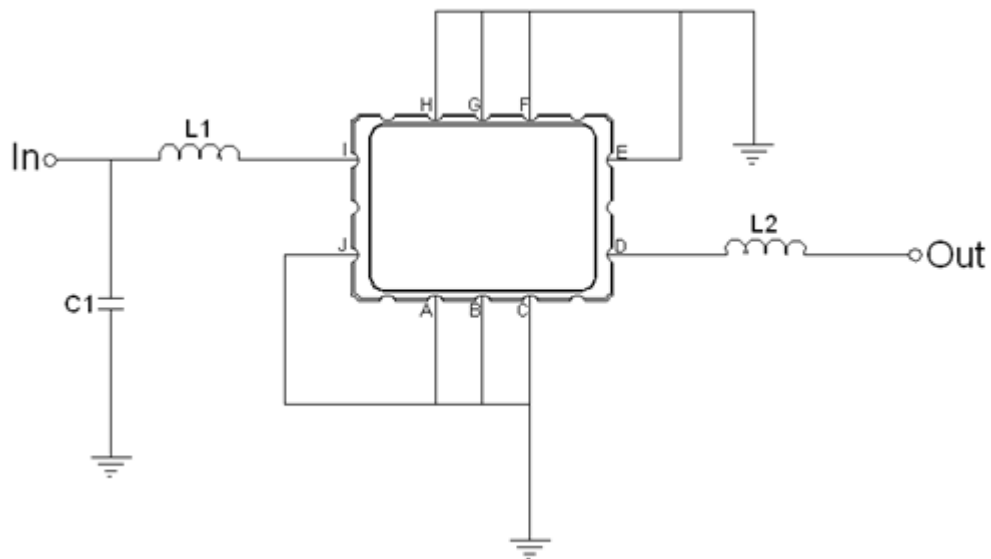
## Package Dimensions



- ① **TRANSKO:** Brand
- ② **TL38010A:** Model Name
- ③ **X :** Date Code (Year)
- ④ **Y :** Date Code (Month)
- ⑤ **Z :** Date Code (Date)
- : Index Dot

Pin Description	
A, B, C, E, F, G, H, J	Ground
I	Input
D	Output

## Testing Environment



Test Fixture & Values	
Input	L1=18 nH , C1=13 pF
Output	L2=12 nH
Source/Load Impedance	50 Ω

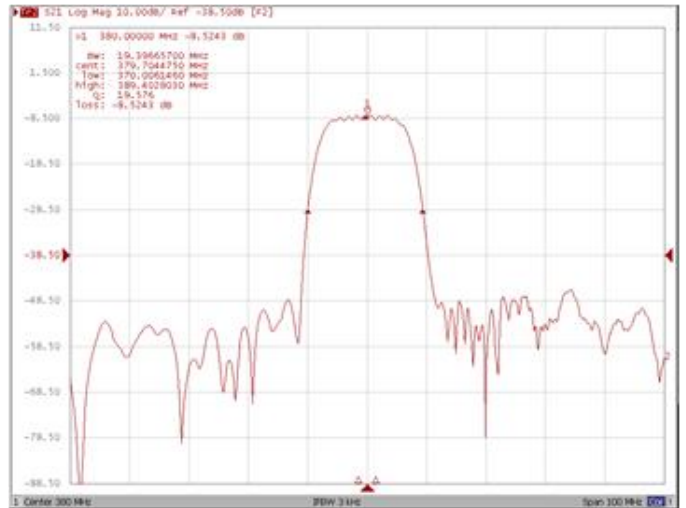
## Frequency Characteristics

### Frequency Response

**Bandwidth at -3.0 dB**



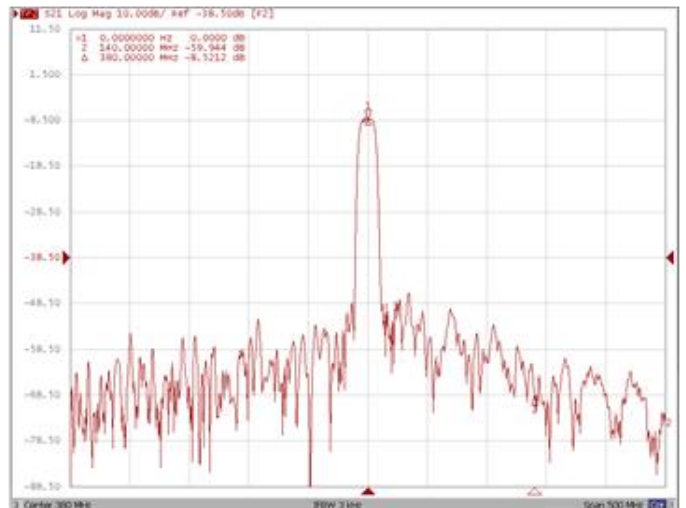
**Bandwidth at -20.0 dB**



**Bandwidth at -40.0 dB**

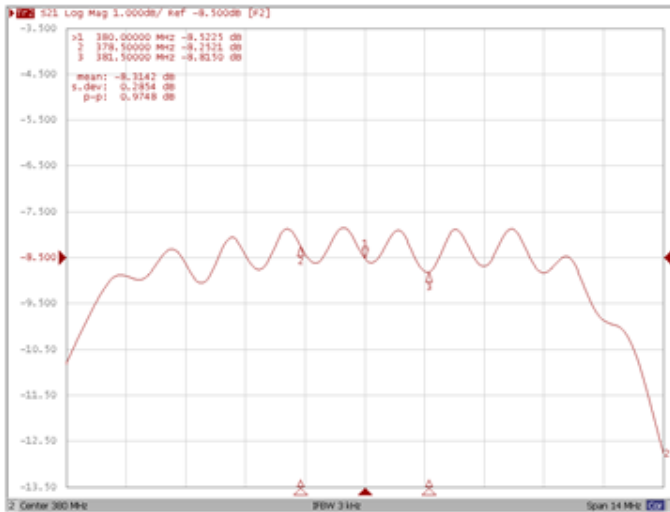


**Attenuation at Fo +140MHz**

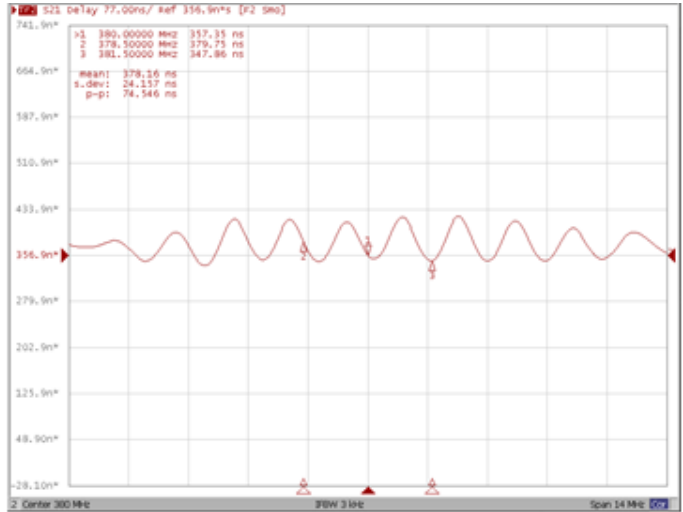


**Frequency Response**

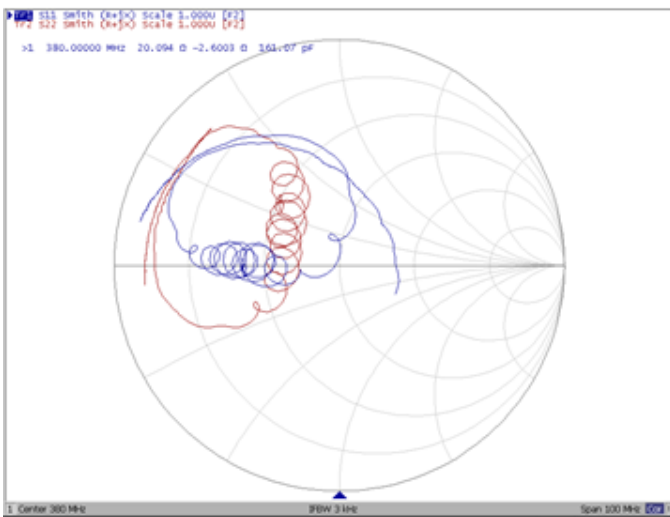
**Ripple Variation Fo±1.5MHz**



**Group Delay Variation Fo±1.5MHz**



**Smith Chart**



**VSWR**

