

- 201.00 MHz IF SAW Filter / 11.35 MHz Bandwidth
- Revision 0: 27 Feb. 2008

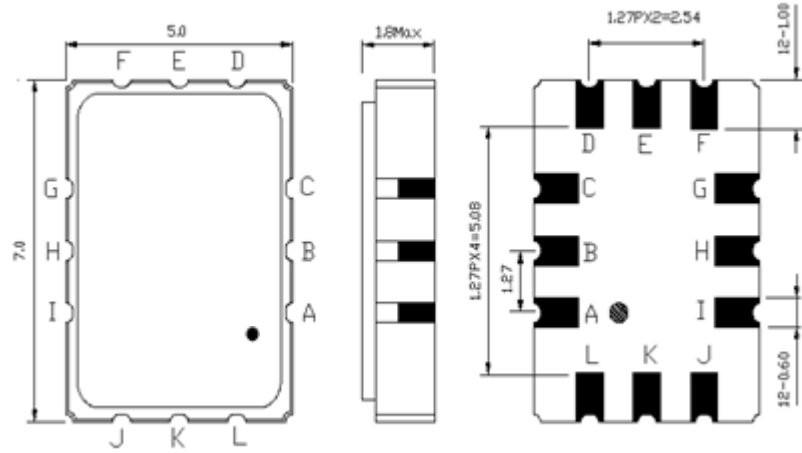
Electrical Characteristics

MAXIMUM RATING				
PARAMETERS DESCRIPTION	UNIT	MINIMUM	TYPICAL	MAXIMUM
Operation Temperature Range	°C	-30	-	80
Storage Temperature Range	°C	-40	-	85
Maximum DC Voltage	V	-	-	10
Maximum Input Power	dBm	-	-	10
Source Impedance (single ended) ⁽¹⁾	Ω	-	50	-
Load Impedance (single ended) ⁽¹⁾	Ω	-	50	-
Package type & size	S1			
Length x Width	mm ²	-	7.0 x 5.0	-
Height	mm	-	-	1.8

ELECTRICAL SPECIFICATION				
PARAMETERS DESCRIPTION	UNIT	MINIMUM	TYPICAL	MAXIMUM
Center Frequency (Fo)	MHz	200.75	201.0	201.25
Insertion Loss at Fo	dB	-	12.70	15.0
Amplitude Ripple Variation at Fo ± 4.5 MHz	dB _{p-p}	-	0.3	0.8
Group Delay Variation at Fo ± 4.5 MHz	nsec	-	40	80
Absolute Delay at Fo	µsec	-	0.69	-
Temperature Coefficient	ppm/°C	-	-18	-
Bandwidth at -1.0 dB	MHz	11.00	11.35	-
Bandwidth at -3.0 dB	MHz	-	12.50	-
Bandwidth at -40.0 dB	MHz	-	16.75	17.20
Relative Attenuation:				
Lower Sidelobe	dB	40	50	-
Upper Sidelobe	dB	40	50	-

Notes : (1) With Matching Network (Ref. Testing Environment Circuit as shown below).
Those impedances could be modified with different impedance values and/or structures, if necessary.

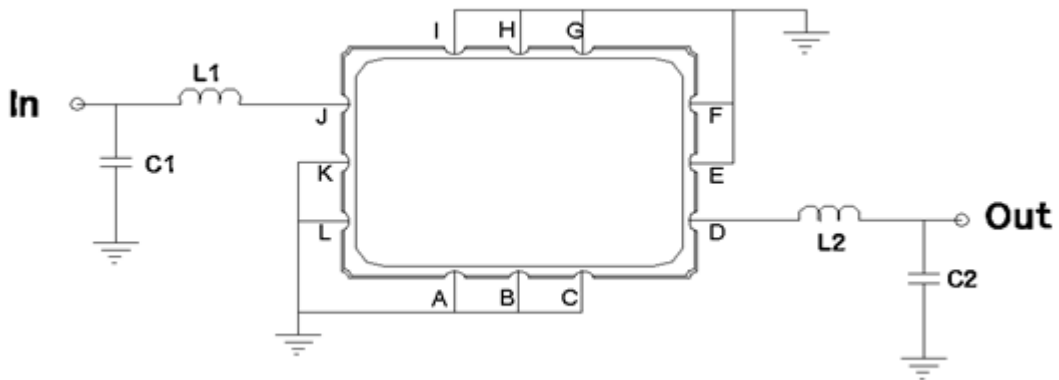
Package Dimensions



- ① **TRANSKO:** Brand
- ② **TL2011A:** Model Name
- ③ **X :** Date Code (Year)
- ④ **Y :** Date Code (Month)
- ⑤ **Z :** Date Code (Date)
- : Index Dot

Pin Description	
A, B, C, E, F, G, H, I, K, L	Ground
J	Input
D	Output

Testing Environment

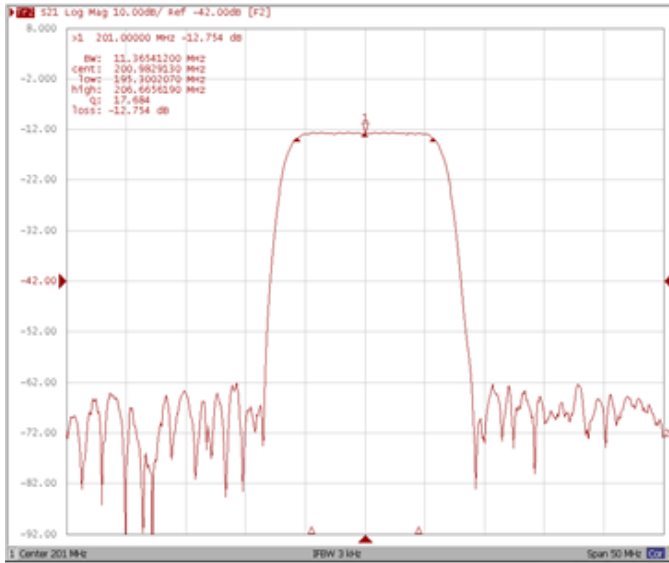


Test Fixture & Values	
Input	L1=33 nH , C1=33 pF
Output	L1=33 nH , C2=33 pF
Source/Load Impedance	50 Ω

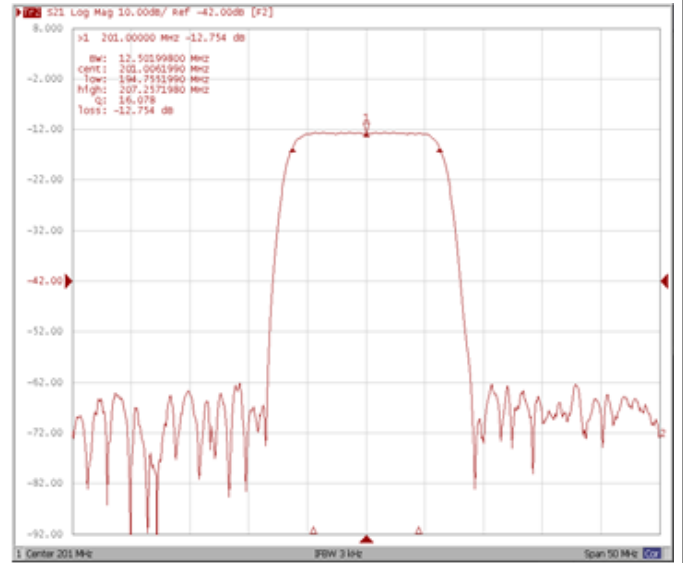
Frequency Characteristics

Frequency Response

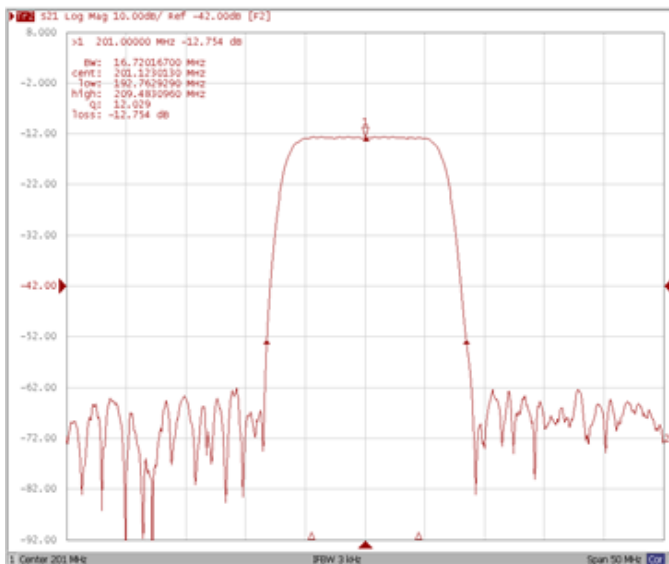
Bandwidth at -1.0 dB



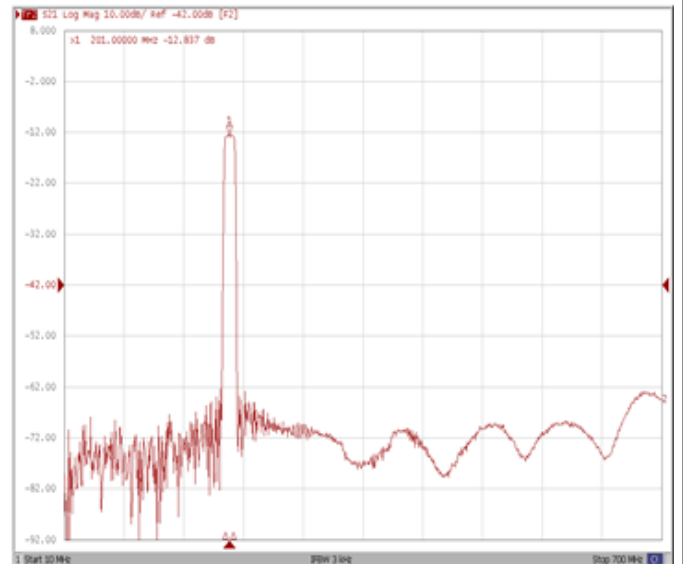
Bandwidth at -3.0 dB



Bandwidth at -40.0 dB

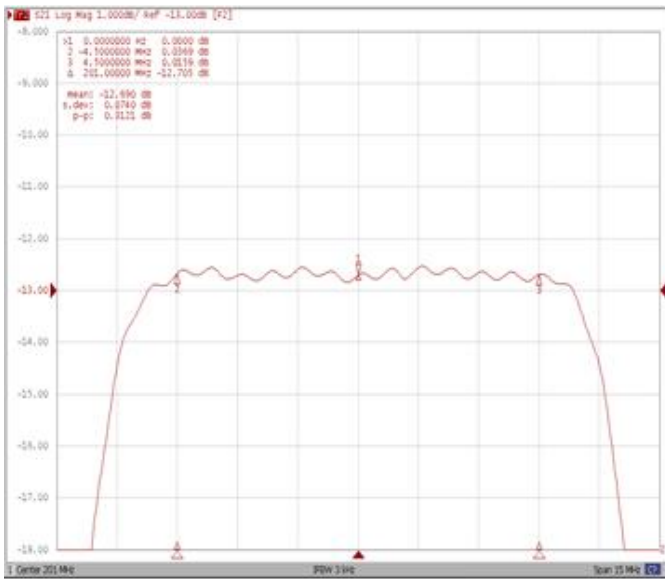


Wide-Band

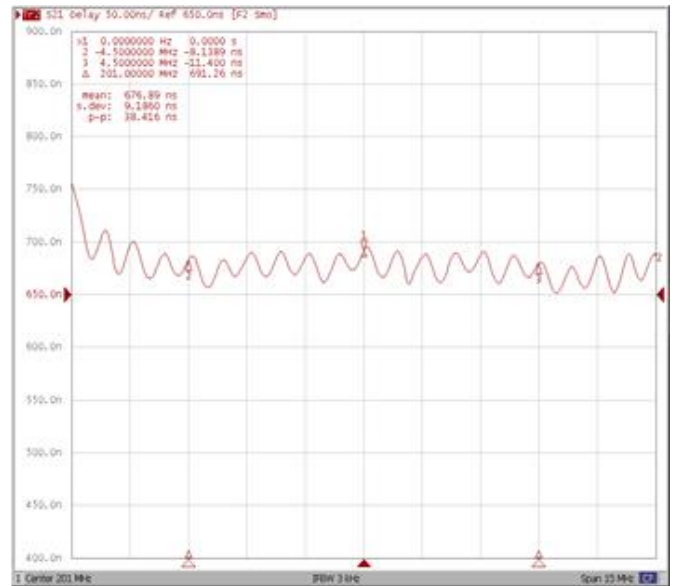


Frequency Response

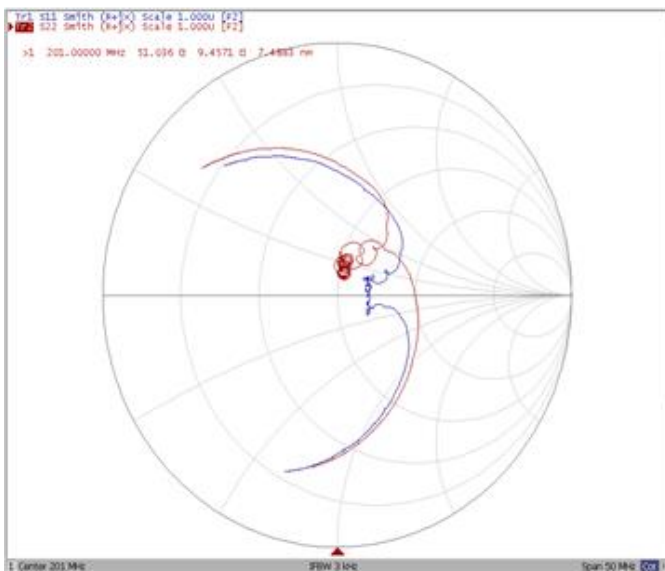
Ripple Variation at Fo±4.5MHz



Group Delay Variation at Fo±4.5MHz



Smith Chart



Attenuation

