

- 147.0 MHz IF SAW Filter / 9.0 MHz Bandwidth
- Revision 1: 29 Oct. 2007

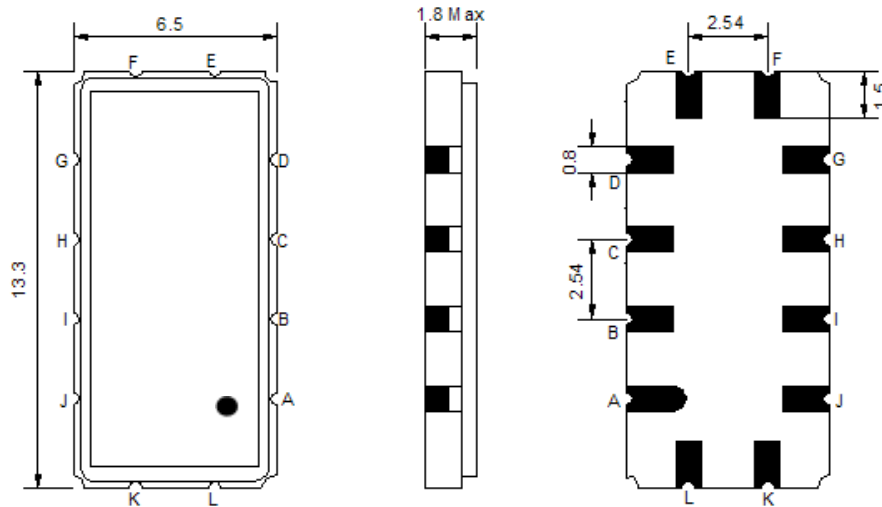
## Electrical Characteristics

MAXIMUM RATING				
PARAMETERS DESCRIPTION	UNIT	MINIMUM	TYPICAL	MAXIMUM
Operating Temperature Range	°C	0	-	80
Storage Temperature Range	°C	-40	-	55
Maximum DC Voltage	V	-	-	10
Maximum Input Power	dBm	-	-	10
Source Impedance (single ended) <sup>(1)</sup>	Ω	-	50	-
Load Impedance (single ended) <sup>(1)</sup>	Ω	-	50	-
Package type & size	V			
Length x Width	mm <sup>2</sup>	-	13.3 x 6.5	-
Height	mm	-	-	1.8

ELECTRICAL SPECIFICATION				
PARAMETERS DESCRIPTION	UNIT	MINIMUM	TYPICAL	MAXIMUM
Center Frequency (Fo)	MHz	146.6	147.0	147.4
Insertion Loss at Fo	dB	-	7.8	11.0
Amplitude Ripple Variation at Fo ± 4.0 MHz	dB <sub>p-p</sub>	-	0.6	1.0
Group Delay Variation at Fo ± 4.0 MHz	nsec	-	60	150
Absolute Delay at Fo	µsec	-	0.93	-
Temperature Coefficient	ppm/°C	-	-89	-
Bandwidth at -1.0 dB	MHz	8.0	9.0	-
Bandwidth at -3.0 dB	MHz	9.5	10.1	-
Bandwidth at -35.0 dB	MHz	-	13.6	15.0
Relative Attenuation:				
Lower Sidelobe	dB	42	50	-
Upper Sidelobe	dB	42	45	-

**Notes :** (1) With Matching Network (Ref. Testing Environment Circuit as shown below).  
Those impedances could be modified with different impedance values and/or structures, if necessary.

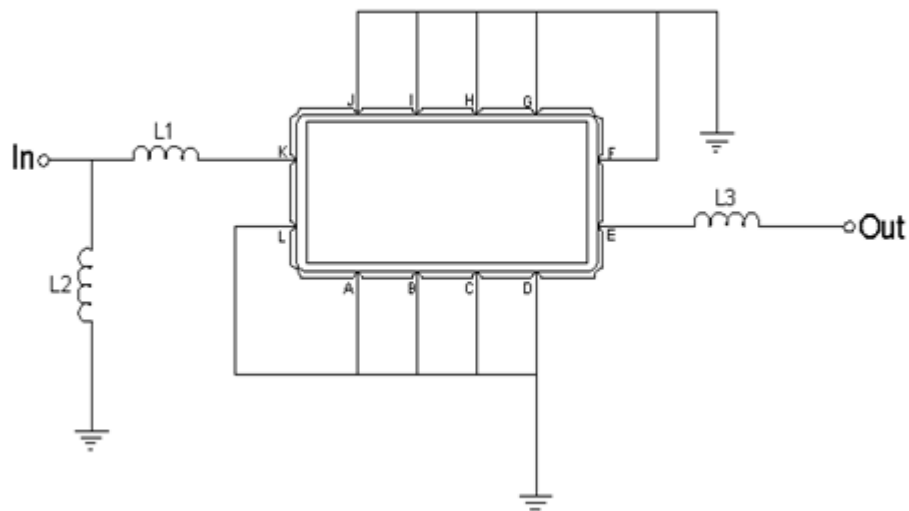
## Package Dimensions



- ① **TRANSKO:** Brand
- ② **TL14710A:** Model Name
- ③ **X :** Date Code (Year)
- ④ **Y :** Date Code (Month)
- ⑤ **Z :** Date Code (Date)
- : Index Dot

Pin Description	
A, B, C, D, F, G, H, I, J, L	Ground
K	Input
E	Output

## Testing Environment



Test Fixture & Values	
Input	L1=8.2 nH , L2=47 nH
Output	L3=22 nH
Source/Load Impedance	50 Ω

## Frequency Characteristics

### Frequency Response

