

- Low-Loss 140.00 MHz IF SAW Filter / 9.1 MHz Bandwidth
- Revision 1: 29 Oct. 2007

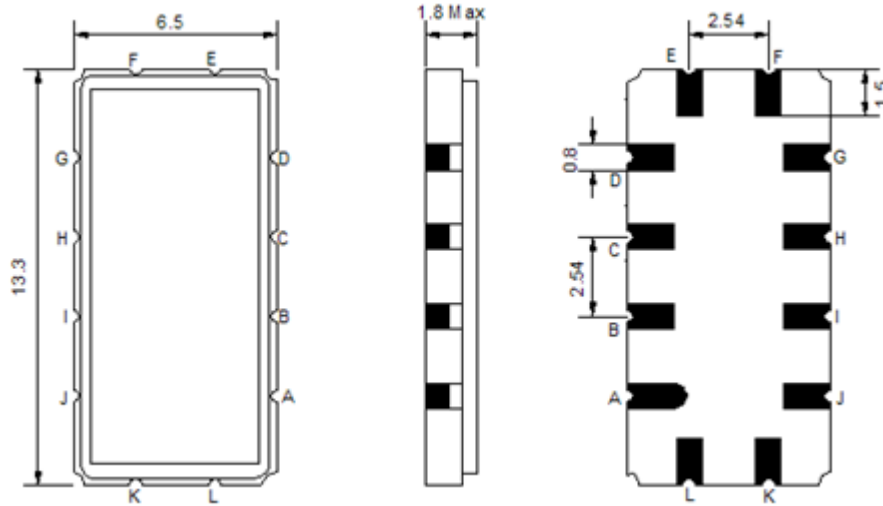
## Electrical Characteristics

MAXIMUM RATING				
PARAMETERS DESCRIPTION	UNIT	MINIMUM	TYPICAL	MAXIMUM
Operation Temperature Range	°C	-30	-	80
Storage Temperature Range	°C	-40	-	85
Maximum DC Voltage	V	-	-	10
Maximum Input Power	dBm	-	-	10
Source Impedance (single ended) <sup>(1)</sup>	Ω	-	50	-
Load Impedance (single ended) <sup>(1)</sup>	Ω	-	50	-
Package type & size	V			
Length x Width	mm <sup>2</sup>	-	13.3 x 6.5	-
Height	mm	-	-	1.8

ELECTRICAL SPECIFICATION				
PARAMETERS DESCRIPTION	UNIT	MINIMUM	TYPICAL	MAXIMUM
Center Frequency (Fo)	MHz	139.85	140.0	140.15
Insertion Loss at Fo	dB	-	13.6	15.0
Amplitude Ripple Variation	dB <sub>p-p</sub>	-	0.4	1.0
Group Delay Variation	nsec	-	64	100
Absolute Delay at Fo	μsec	-	0.97	-
Temperature Coefficient	ppm/°C	-	-20	-
Bandwidth at -1.0 dB	MHz	9.1	9.3	-
Bandwidth at -3.0 dB	MHz	9.9	10.1	-
Bandwidth at -40.0 dB	MHz	-	12.9	13.1
Bandwidth at -45.0 dB	MHz	-	13.2	14.0
Relative Attenuation:				
Lower sidelobe	dB	45	48	-
Upper sidelobe	dB	41	45	-

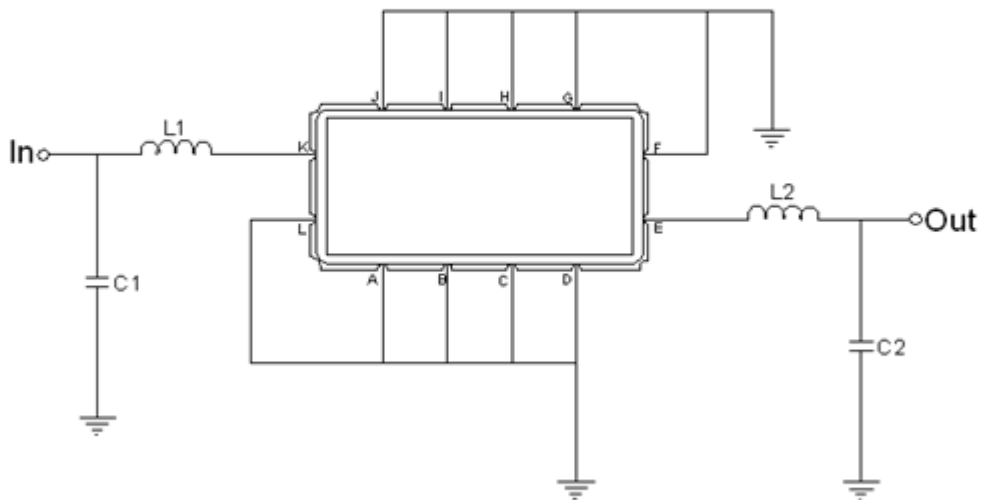
**Notes :** (1) With Matching Network (Ref. Testing Environment Circuit as shown below).  
Those impedances could be modified with different impedance values and/or structures, if necessary.

## Package Dimensions



Pin Description	
A, B, C, D, F, G, H, I, J, L	Ground
K	Input
E	Output

## Testing Environment



Test Fixture & Values	
Input	L1=47nH Q >40 ,C1=51pF
tput	L2=47nH Q.>40 ,C2=51pF
Source/Load Impedance	50 Ω

## Frequency Characteristics

### Frequency Response

