

- Low-Loss 140.00 MHz IF SAW Filter / 8.5 MHz Bandwidth
- Revision 1: 29 Oct. 2007

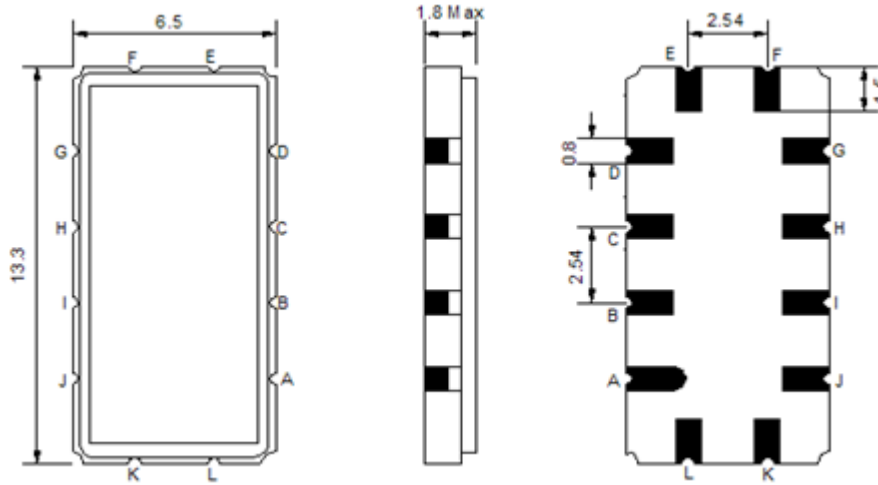
## Electrical Characteristics

MAXIMUM RATING				
PARAMETERS DESCRIPTION	UNIT	MINIMUM	TYPICAL	MAXIMUM
Operation Temperature Range	°C	-30	-	80
Storage Temperature Range	°C	-40	-	85
Maximum DC Voltage	V	-	-	10
Maximum Input Power	dBm	-	-	10
Source Impedance (single ended) <sup>(1)</sup>	Ω	-	50	-
Load Impedance (single ended) <sup>(1)</sup>	Ω	-	50	-
Package type & size	V			
Length x Width	mm <sup>2</sup>	-	13.3 x 6.5	-
Height	mm	-	-	1.8

ELECTRICAL SPECIFICATION				
PARAMETERS DESCRIPTION	UNIT	MINIMUM	TYPICAL	MAXIMUM
Center Frequency (Fo)	MHz	139.6	140.0	140.4
Insertion Loss at Fo	dB	-	8	10
Temperature Coefficient	ppm/°C			
Amplitude Ripple within fo ±3.2 MHz	dB <sub>p-p</sub>	-	0.6	1.0
Group Delay Variation within fo ±3.2 MHz	nsec	-	60	100
Absolute Delay at Fo	μsec	-	1.0	-
Bandwidth at -1.0 dB	MHz	7.6	7.9	-
Bandwidth at -3.0 dB	MHz	8.5	8.8	-
Bandwidth at -40.0 dB	MHz	-	13.0	13.8
Relative Attenuation:				
10 MHz ~ 133 MHz	dB	45	-	-
147 MHz ~ 280 MHz	dB	45	-	-

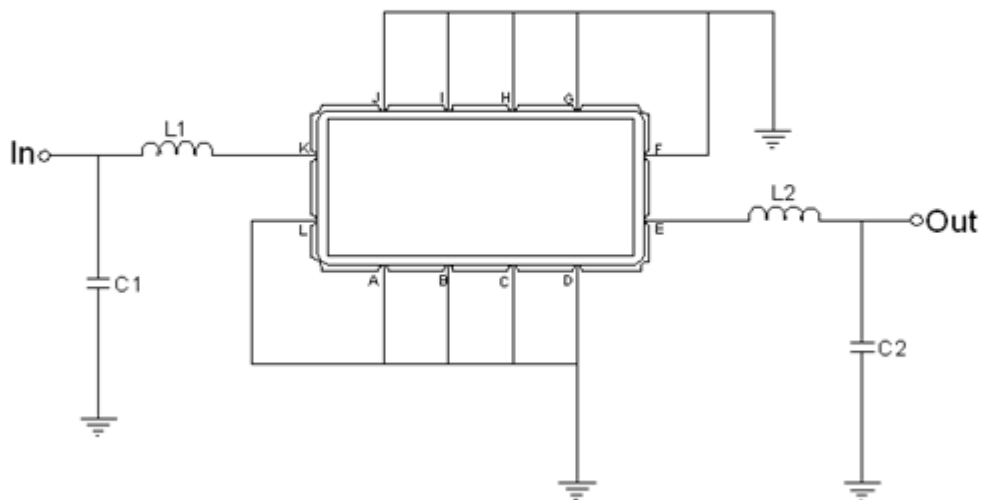
**Notes :** (1) With Matching Network (Ref. Testing Environment Circuit as shown below).  
Those impedances could be modified with different impedance values and/or structures, if necessary.

## Package Dimensions



Pin Description	
A, B, C, D, F, G, H, I, J, L	Ground
K	Input
E	Output

## Testing Environment



Test Fixture & Values	
Input	L1=TBD , C1=TBD
Output	L2=TBD , C2=TBD
Source/Load Impedance	50 $\Omega$

**Frequency Characteristics**

**Frequency Response**

