

- 87.50 MHz IF SAW Filter / 2.40 MHz Bandwidth
- Revision 0: 05 Dec. 2008

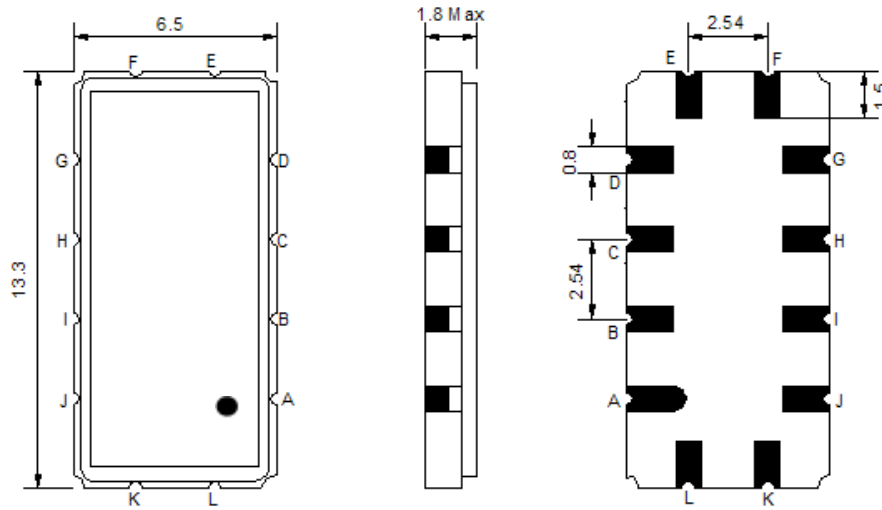
Electrical Characteristics

MAXIMUM RATING				
PARAMETERS DESCRIPTION	UNIT	MINIMUM	TYPICAL	MAXIMUM
Operating Temperature Range	°C	-20	-	70
Storage Temperature Range	°C	-40	-	85
Maximum DC Voltage	V	-	-	10
Maximum Input Power	dBm	-	-	10
Source Impedance (single ended) ⁽¹⁾	Ω	-	50	-
Load Impedance (single ended) ⁽¹⁾	Ω	-	50	-
Package type & size	V			
Length x Width	mm ²	-	13.3 x 6.5	-
Height	mm	-	-	1.8

ELECTRICAL SPECIFICATION				
PARAMETERS DESCRIPTION	UNIT	MINIMUM	TYPICAL	MAXIMUM
Center Frequency (Fo)	MHz	87.38	87.50	87.62
Insertion Loss at Fo	dB	-	10.5	13.0
Group Delay Variation (Fo±500kHz)	nsec	-	15	50
Absolute Delay at Fo	usec	-	1.32	-
Passband Ripple Variation (Fo±500kHz)	dB	-	0.1	0.6
Bandwidth at -1dB	MHz	2.0	2.4	-
Bandwidth at -3dB	MHz	-	2.9	-
Bandwidth at -40dB	MHz	-	4.9	5.5
Ultimate Rejection	dB	40	48	-
Phase Linearity(Fo±500KHz)	deg _{p-p}	-	1.0	5.0
Temperature Coefficient	ppm/°C	-	-18	-

Notes : (1) With Matching Network (Ref. Testing Environment Circuit as shown below).
Those impedances could be modified with different impedance values and/or structures, if necessary.

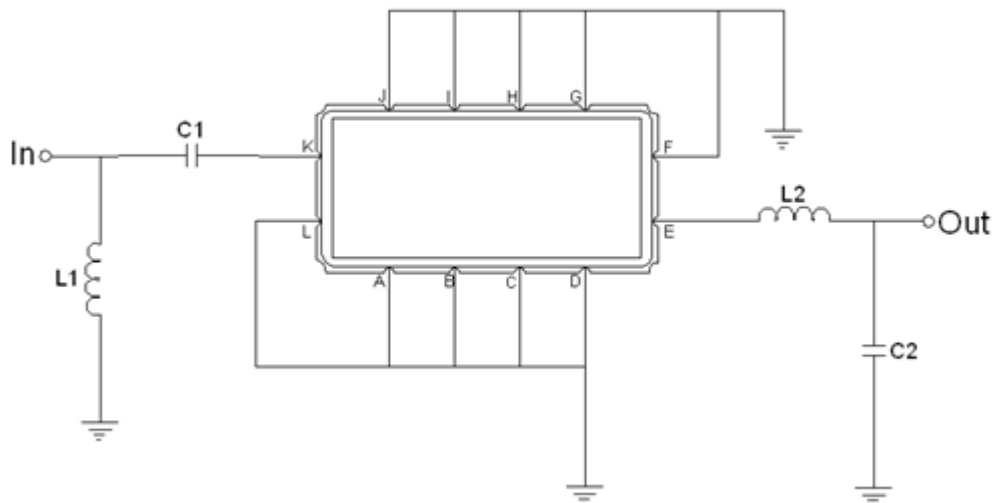
Package Dimensions



- ① **TRANSKO:** Brand
- ② **TL08702A:** Model Name
- ③ **X :** Date Code (Year)
- ④ **Y :** Date Code (Month)
- ⑤ **Z :** Date Code (Date)
- : Index Dot

Pin Description	
A, B, C, D, F, G, H, I, J, L	Ground
K	Input
E	Output

Testing Environment

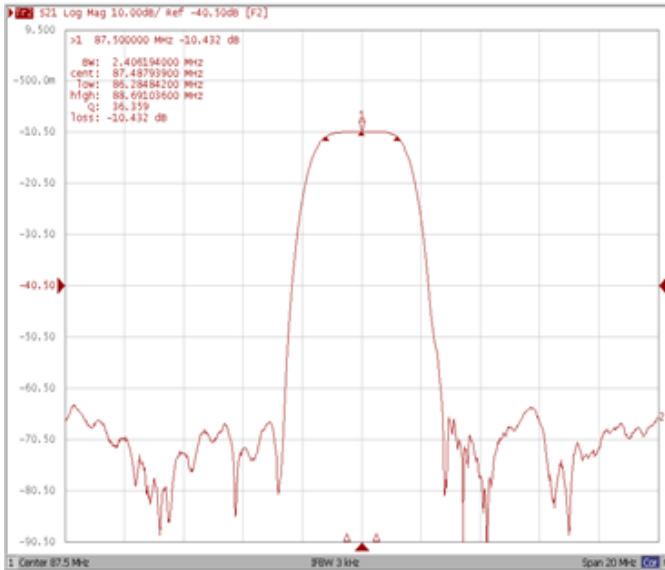


Test Fixture & Values	
Input	L1 = 56 nH, C1 = 160 pF
Output	L2 = 47 nH, C2 = 100 pF
Source/Load Impedance	50 Ω

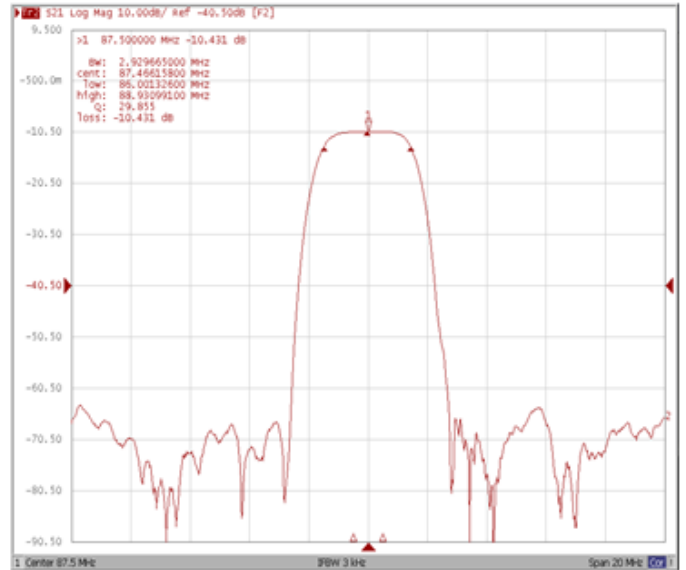
Frequency Characteristics

Frequency Response

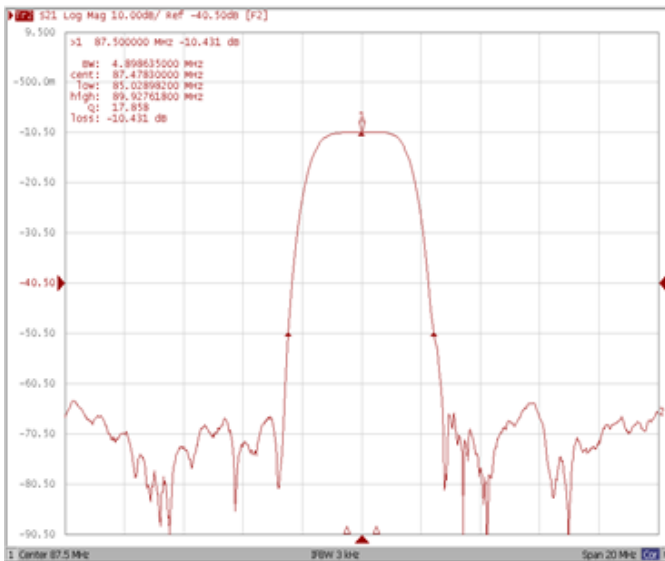
Bandwidth at -1.0 dB



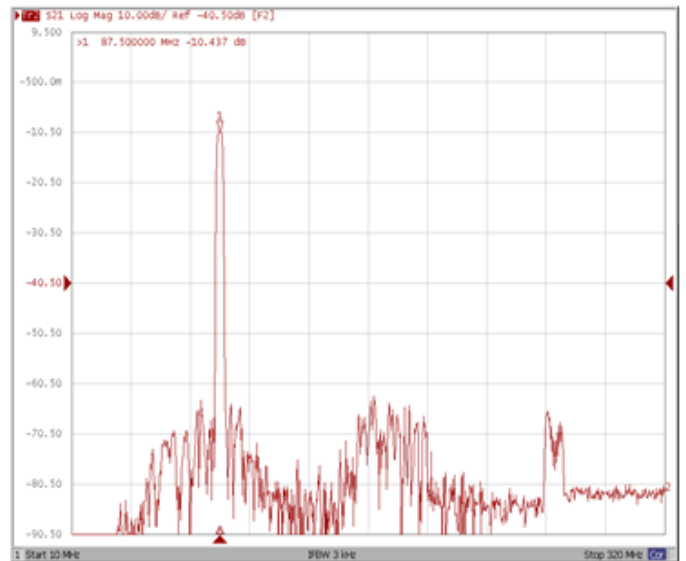
Bandwidth at -3.0 dB



Bandwidth at -40.0 dB



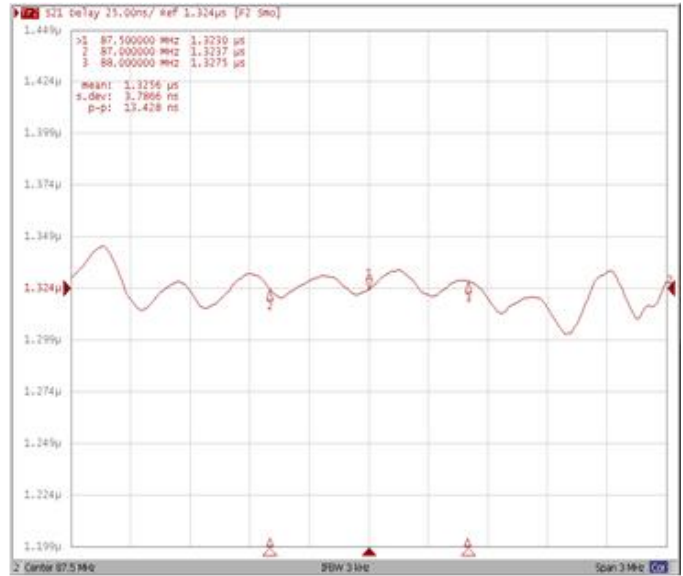
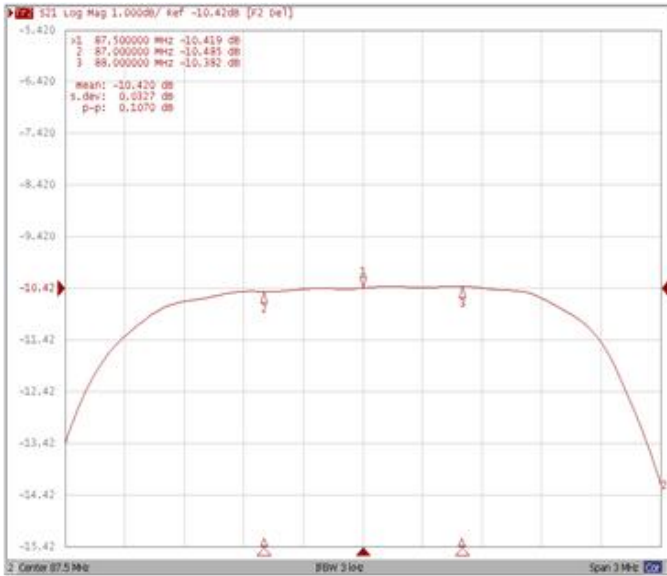
Wide Band



Frequency Response

Ripple Variation Fo±500kHz MHz

Group Delay Variation Fo±500kHz MHz



Smith Chart

SWR

