

- 75.00 MHz IF SAW Filter / 27.15 MHz Bandwidth
- Revision 0: 1 Aug. 2008

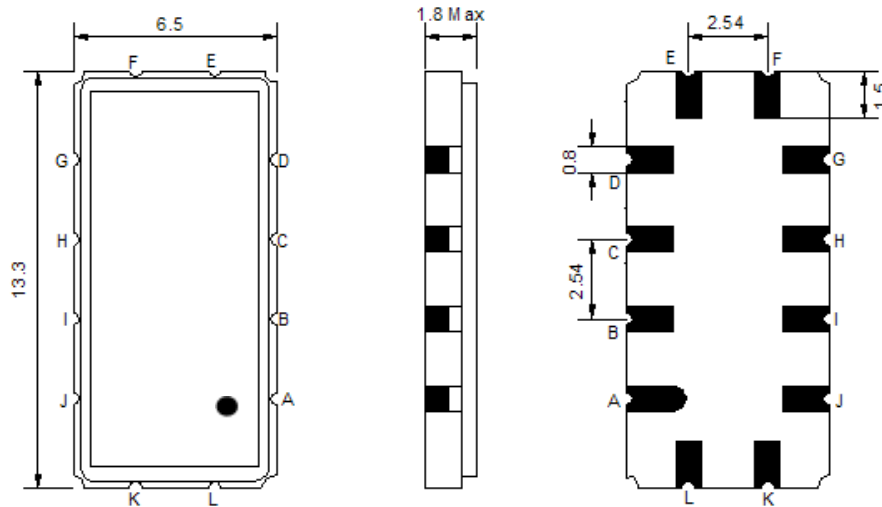
Electrical Characteristics

MAXIMUM RATING				
PARAMETERS DESCRIPTION	UNIT	MINIMUM	TYPICAL	MAXIMUM
Operating Temperature Range	°C	-	25	-
Storage Temperature Range	°C	-40	-	85
Maximum DC Voltage	V	-	-	10
Maximum Input Power	dBm	-	-	10
Source Impedance (single ended) ⁽¹⁾	Ω	-	50	-
Load Impedance (single ended) ⁽¹⁾	Ω	-	50	-
Package type & size	V			
Length x Width	mm ²	-	13.3 x 6.5	-
Height	mm	-	-	1.8

ELECTRICAL SPECIFICATION				
PARAMETERS DESCRIPTION	UNIT	MINIMUM	TYPICAL	MAXIMUM
Center Frequency (Fo)	MHz	-	75.0	-
Insertion Loss at Fo	dB	-	14.5	16.0
Group Delay Variation at Fo ± 12.48 MHz	nsec	-	20	50
Absolute Delay at Fo	usec	-	1.10	-
Passband Ripple Variation at Fo ± 12.48 MHz	dB	-	0.3	0.8
Bandwidth at -1dB	MHz	-	27.15	-
Bandwidth at -3dB	MHz	27.50	27.92	-
Bandwidth at -15dB	MHz	-	29.63	30.00
Bandwidth at -40dB	MHz	-	31.38	-
Ultimate Rejection	dB	40	47	-
Temperature Coefficient	ppm/°C	-	-86	-

Notes : (1) With Matching Network (Ref. Testing Environment Circuit as shown below).
Those impedances could be modified with different impedance values and/or structures, if necessary.

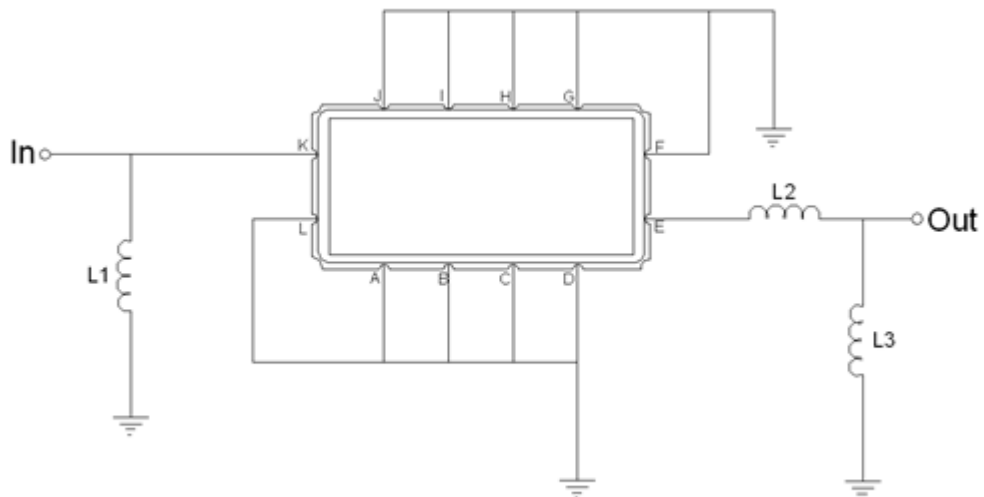
Package Dimensions



- ① **TRANSKO:** Brand
- ② **TL07527D:** Model Name
- ③ **X :** Date Code (Year)
- ④ **Y :** Date Code (Month)
- ⑤ **Z :** Date Code (Date)
- : Index Dot

Pin Description	
A, B, C, D, F, G, H, I, J, L	Ground
K	Input
E	Output

Testing Environment



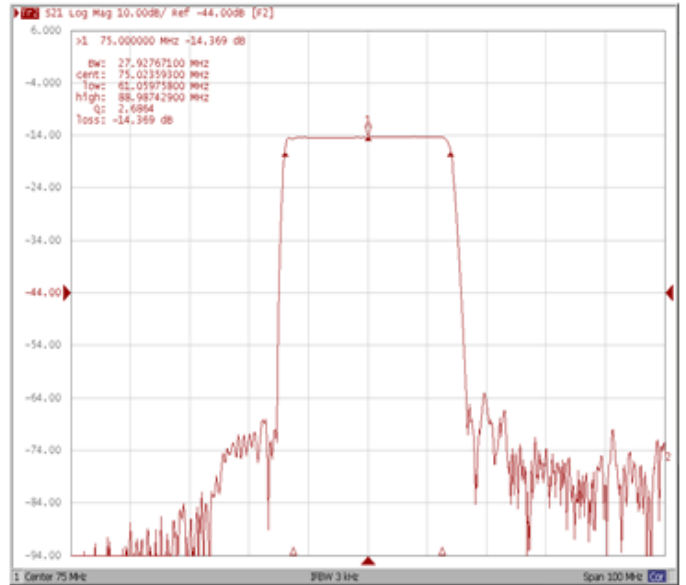
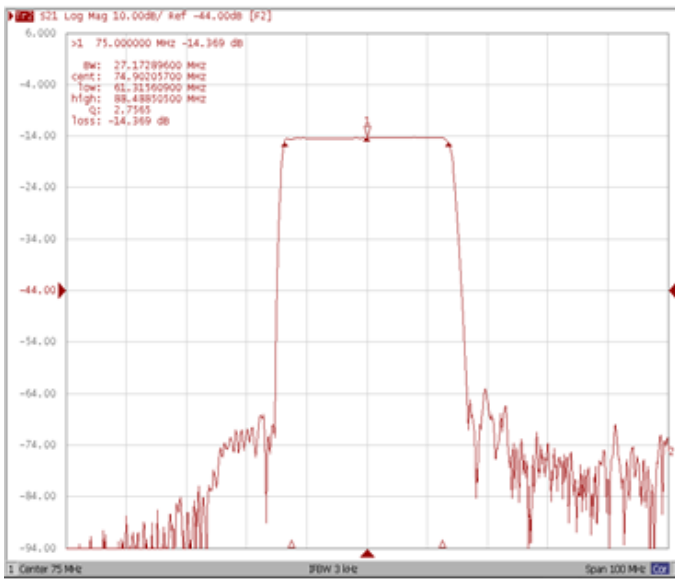
Test Fixture & Values	
Input	L1 = 68 nH
Output	L2 = 8.2 nH , L3 = 82 nH
Source/Load Impedance	50 Ω

Frequency Characteristics

Frequency Response

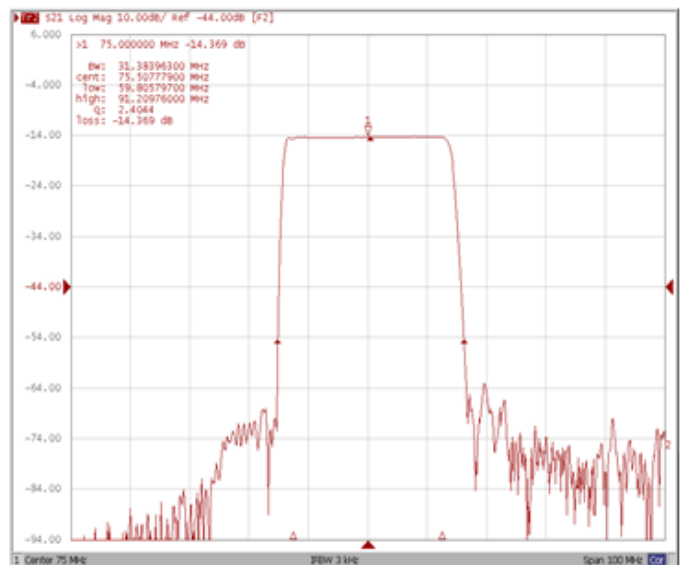
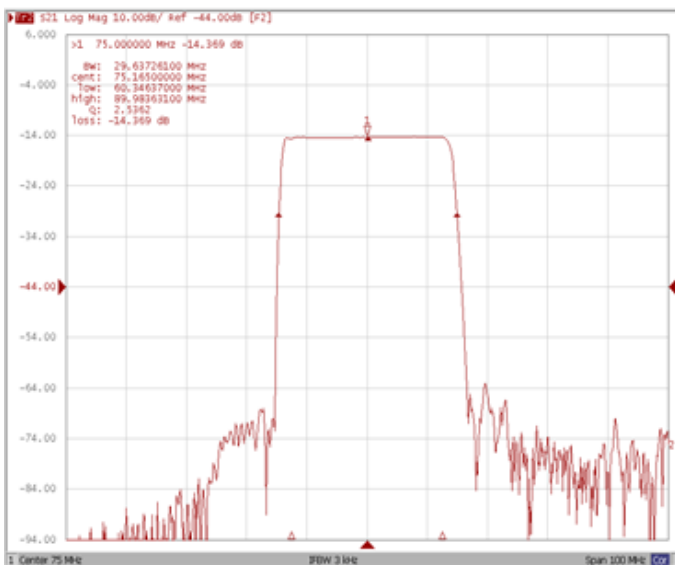
Bandwidth at -1.0 dB

Bandwidth at -3.0 dB



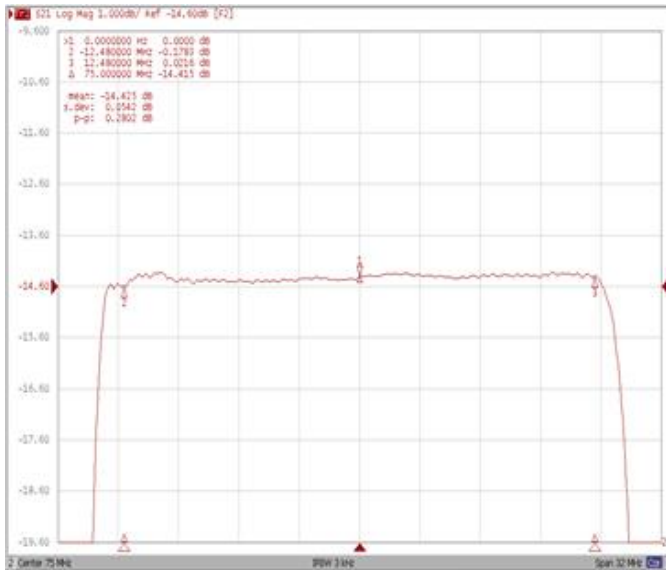
Bandwidth at -15.0 dB

Bandwidth at -40.0 dB



Frequency Response

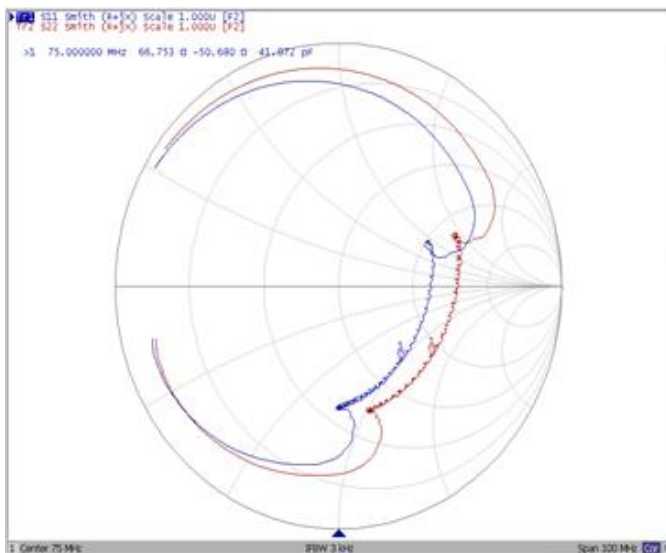
Ripple Variation Fo±12.48MHz



Group Delay Variation Fo±12.48MHz



Smith Chart



VSWR

