

- 70.00 MHz IF SAW Filter / 18.0 MHz Bandwidth
- Revision 0: 22 Jul 2009

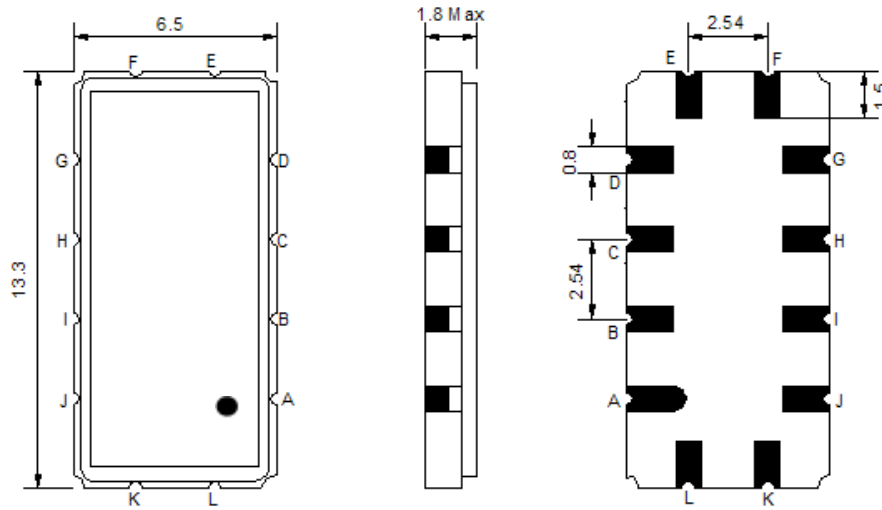
Electrical Characteristics

MAXIMUM RATING				
PARAMETERS DESCRIPTION	UNIT	MINIMUM	TYPICAL	MAXIMUM
Operating Temperature Range	°C	-30	-	80
Storage Temperature Range	°C	-40	-	85
Maximum DC Voltage	V	-	-	10
Maximum Input Power	dBm	-	-	10
Source Impedance (single ended) ⁽¹⁾	Ω	-	50	-
Load Impedance (single ended) ⁽¹⁾	Ω	-	50	-
Package type & size	V			
Length x Width	mm ²	-	13.3 x 6.5	-
Height	mm	-	-	1.8

ELECTRICAL SPECIFICATION				
PARAMETERS DESCRIPTION	UNIT	MINIMUM	TYPICAL	MAXIMUM
Center Frequency (Fo)	MHz	-	70.00	-
Insertion Loss at Fo	dB	-	13.3	15.0
Group Delay Variation (Fo±7.50MHz)	ns	-	20	35
Absolute Delay Time at Fo	us	-	0.99	-
Amplitude Ripple (Fo±7.50MHz)	dB	-	0.20	0.80
Bandwidth at -1dB	MHz	17.70	18.00	-
Bandwidth at -10dB	MHz	-	20.10	-
Bandwidth at -20dB	MHz	-	21.10	21.40
Bandwidth at -40dB	MHz	-	22.32	-
Ultimate Rejection	dB	40	45	-
Temperature Coefficient	ppm/°C	-	-86	-

Notes : (1) With Matching Network (Ref. Testing Environment Circuit as shown below).
Those impedances could be modified with different impedance values and/or structures, if necessary.

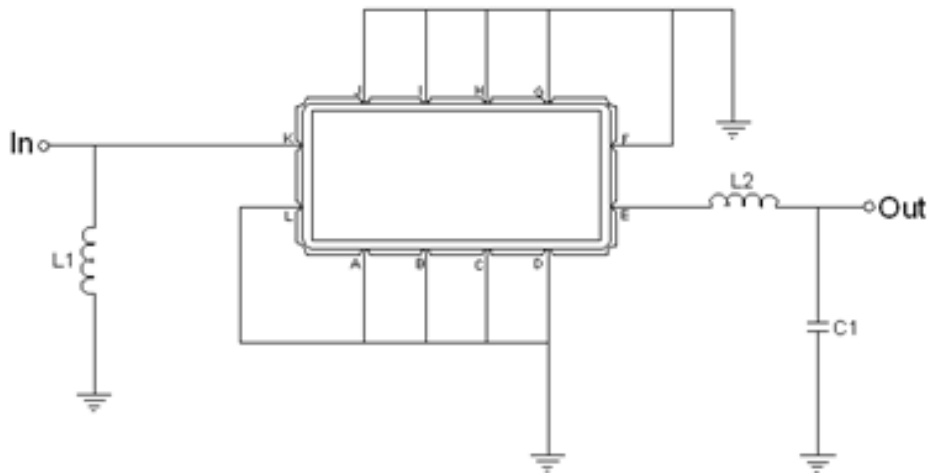
Package Dimensions



- ① **TRANSKO:** Brand
- ② **TL07018B:** Model Name
- ③ **X :** Date Code (Year)
- ④ **Y :** Date Code (Month)
- ⑤ **Z :** Date Code (Date)
- : Index Dot

Pin Description	
A, B, C, D, F, G, H, I, J, L	Ground
K	Input
E	Output

Testing Environment

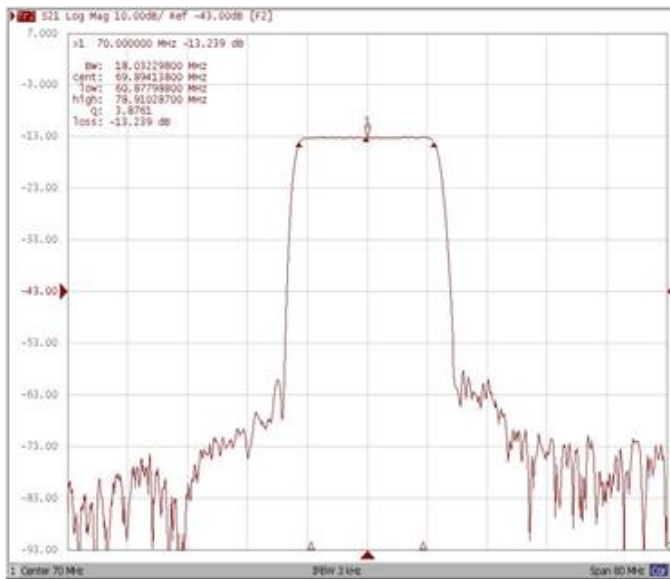


Test Fixture & Values	
Input	L1 = 100 nH
Output	L2 = 120 nH, C1 = 22 pF
Source/Load Impedance	50 Ω

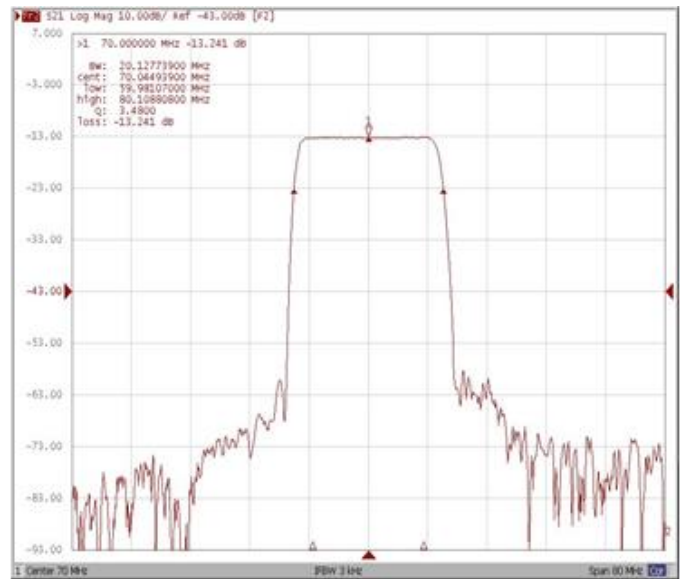
Frequency Characteristics

Frequency Response

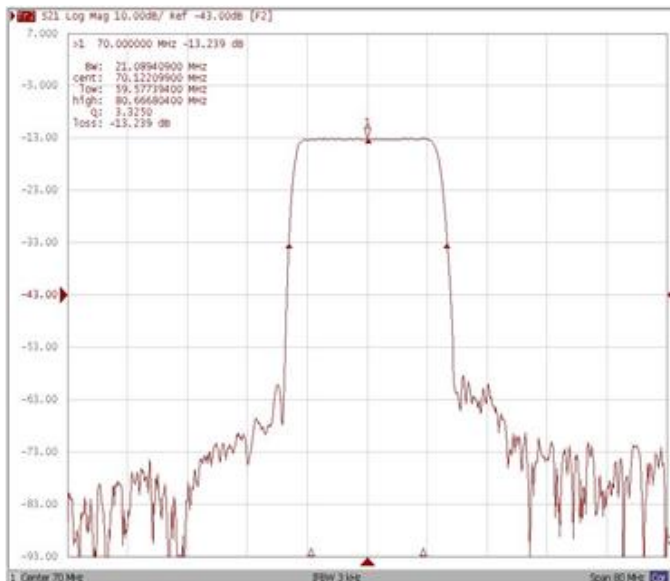
Bandwidth at -1.0 dB



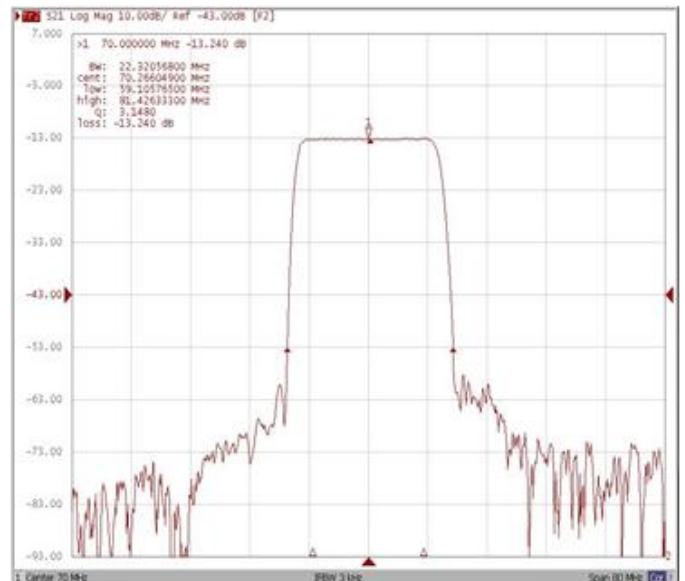
Bandwidth at -10.0 dB



Bandwidth at -20.0 dB

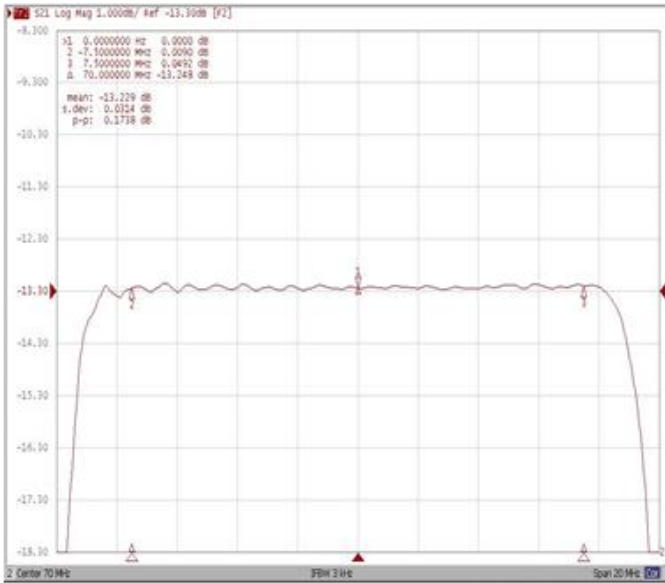


Bandwidth at -40.0 dB

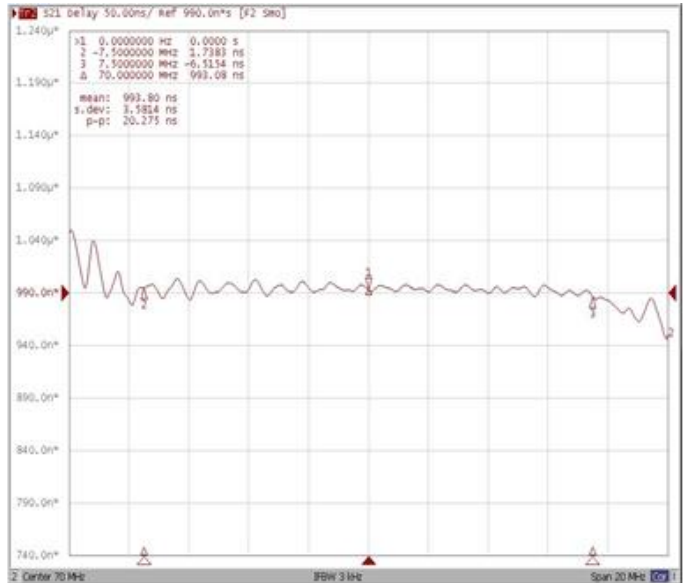


Frequency Response

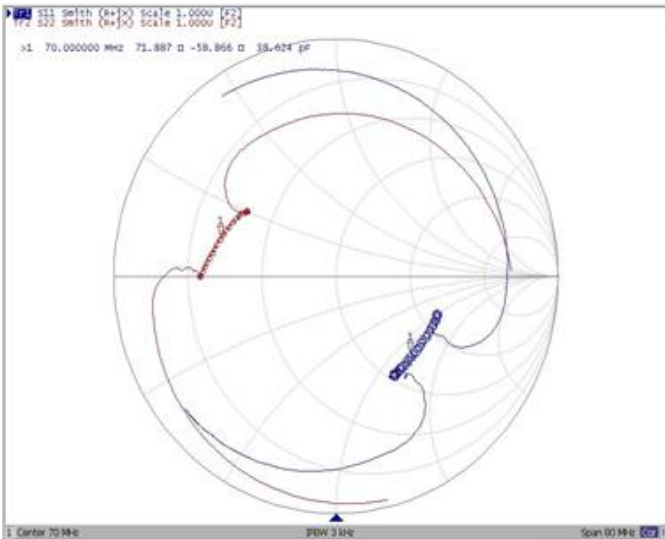
Ripple Variation Fo±7.50MHz



Group Delay Variation Fo±7.50MHz



Smith Chart



SWR

