

- 63.8 MHz IF SAW Filter / 3.60 MHz Bandwidth
- Revision 0: 5 Mar. 2010

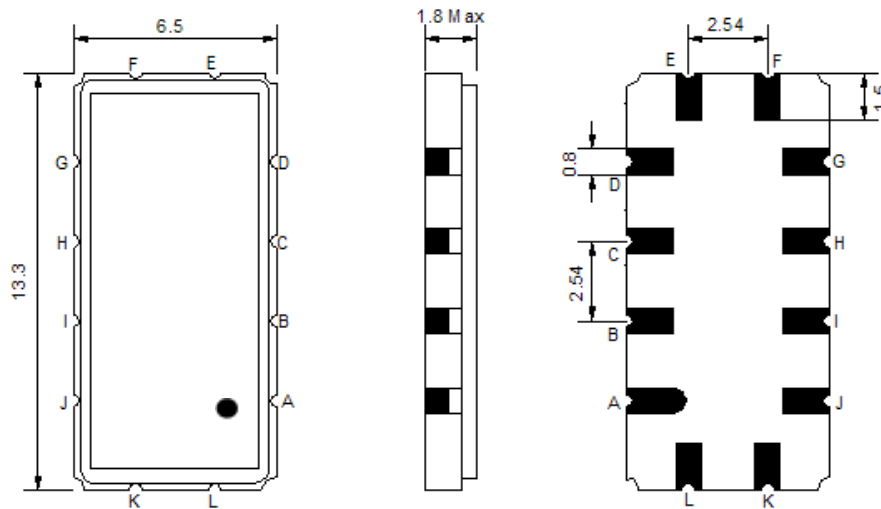
## Electrical Characteristics

MAXIMUM RATING				
PARAMETERS DESCRIPTION	UNIT	MINIMUM	TYPICAL	MAXIMUM
Operating Temperature Range	°C	-5	-	65
Storage Temperature Range	°C	-40	-	85
Maximum DC Voltage	V	-	-	10
Maximum Input Power	dBm	-	-	10
Source Impedance (single ended) <sup>(1)</sup>	Ω	-	50	-
Load Impedance (single ended) <sup>(1)</sup>	Ω	-	50	-
Package type & size	V			
Length x Width	mm <sup>2</sup>	-	13.3 x 6.5	-
Height	mm	-	-	1.8

ELECTRICAL SPECIFICATION				
PARAMETERS DESCRIPTION	UNIT	MINIMUM	TYPICAL	MAXIMUM
Center Frequency (Fo)	MHz	63.70	63.80	63.90
Insertion Loss at Fo	dB	-	13.30	15.00
Group Delay Variation (Fo±1.50MHz)	ns	-	35	70
Absolute Delay Time at Fo	us	-	1.68	1.80
Temperature Coefficient	ppm/°C	-	-18	-
Amplitude Ripple (Fo±1.50MHz)	dB	-	0.30	0.80
Bandwidth at -1dB	MHz	3.30	3.60	-
Bandwidth at -3dB	MHz	3.80	4.06	-
Bandwidth at -25dB	MHz	-	5.32	5.50
Bandwidth at -40dB	MHz	-	5.83	6.05
Ultimate Rejection	dB	45	50	-

**Notes :** (1) With Matching Network (Ref. Testing Environment Circuit as shown below).  
Those impedances could be modified with different impedance values and/or structures, if necessary.

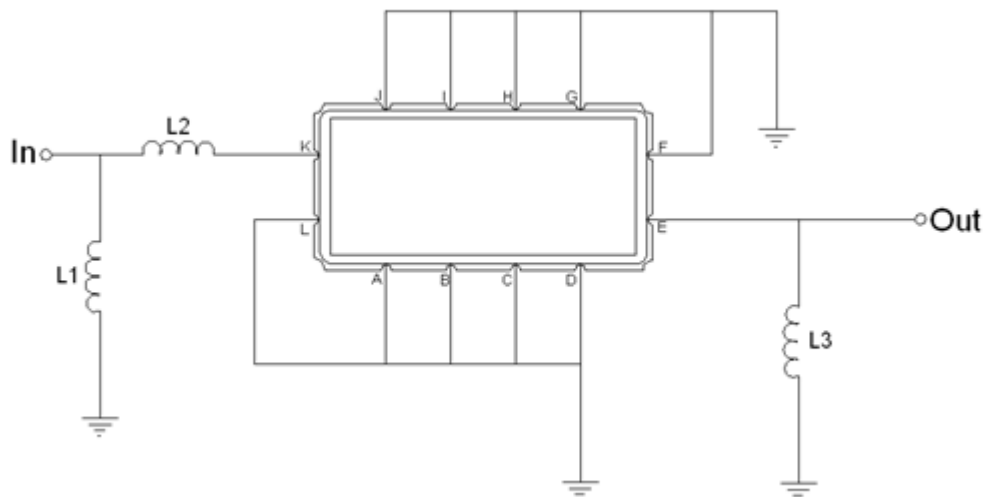
## Package Dimensions



- ① **TRANSKO:** Brand
- ② **TL06303A:** Model Name
- ③ **X :** Date Code (Year)
- ④ **Y :** Date Code (Month)
- ⑤ **Z :** Date Code (Date)
- : Index Dot

Pin Description	
A, B, C, D, F, G, H, I, J, L	Ground
K	Input
E	Output

## Testing Environment

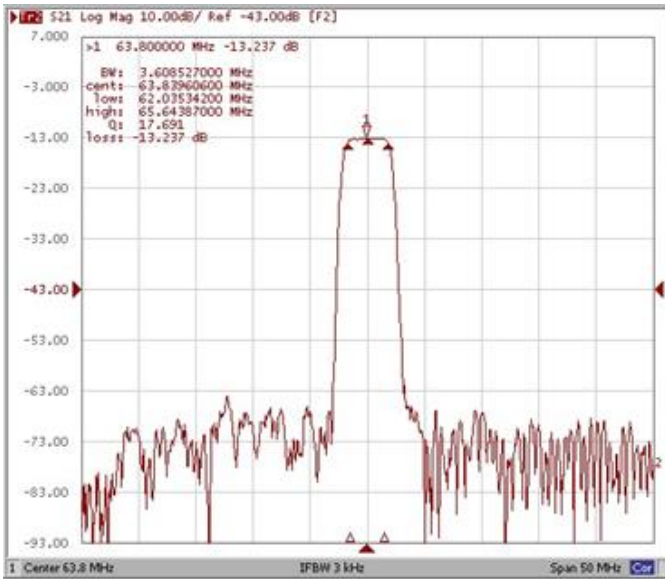


Test Fixture & Values	
Input	L1 = 68 nH, L2 = 12nH
Output	L3 = 56 nH
Source/Load Impedance	50 Ω

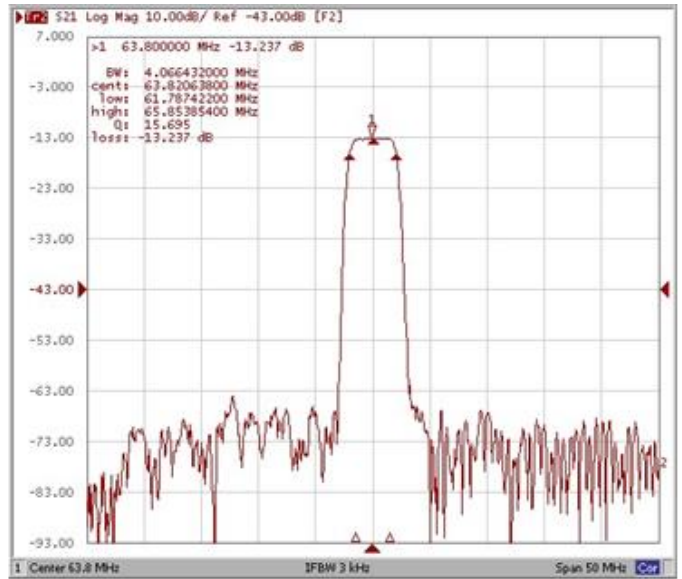
## Frequency Characteristics

### Frequency Response

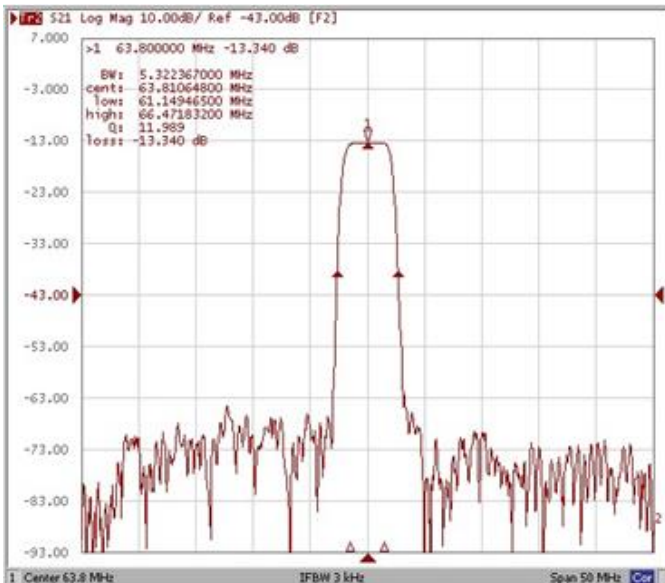
**Bandwidth at -1.0 dB**



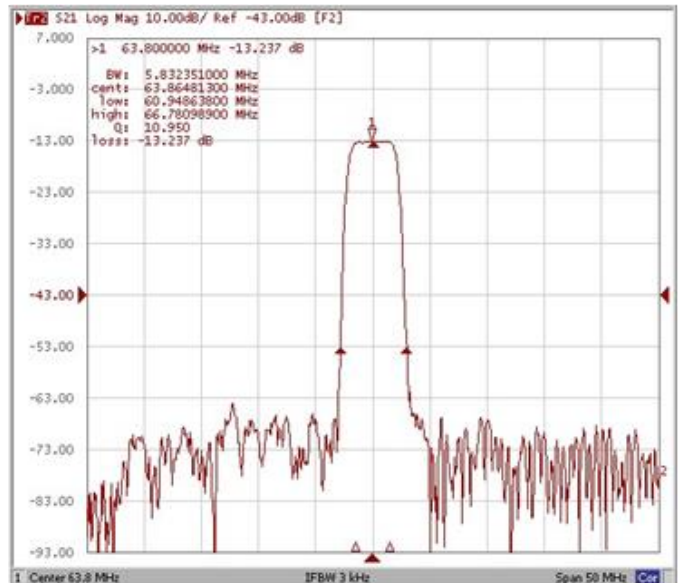
**Bandwidth at -3.0 dB**



**Bandwidth at -25.0 dB**



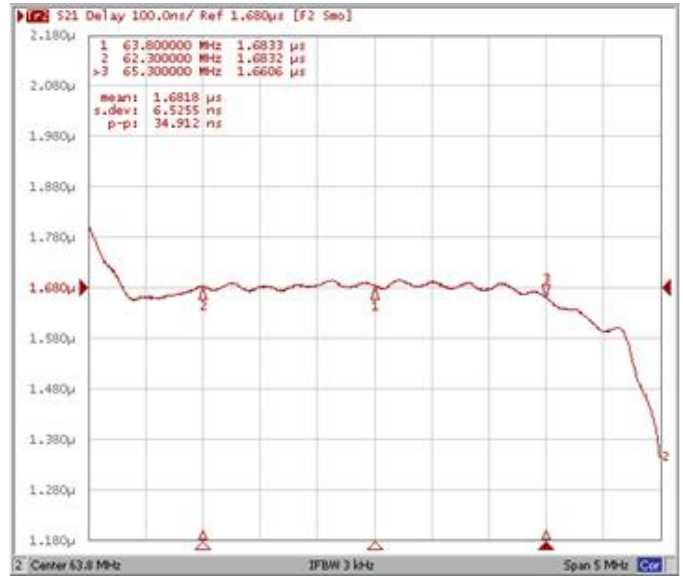
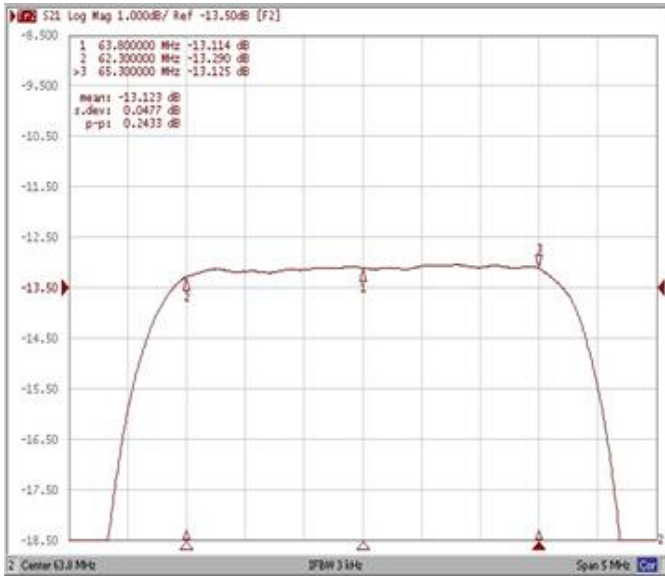
**Bandwidth at -40.0 dB**



**Frequency Response**

**Ripple Variation Fo±1.50MHz**

**Group Delay Variation Fo±1.50MHz**



**Smith Chart**

**VSWR**

