

- 137.50 MHz IF SAW Filter / 14.00 MHz Bandwidth
- Revision 0: 21 Jan. 2013

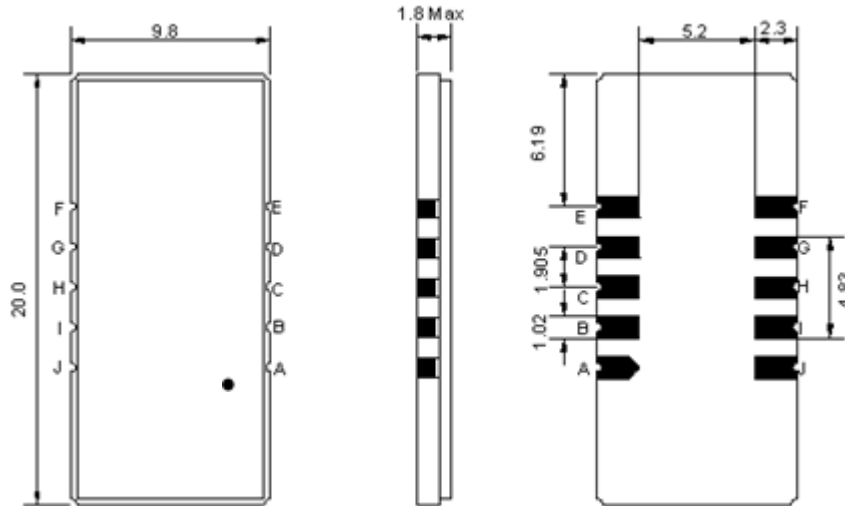
Electrical Characteristics

MAXIMUM RATING				
PARAMETERS DESCRIPTION	UNIT	MINIMUM	TYPICAL	MAXIMUM
Operation Temperature Range	°C	-	25	-
Storage Temperature Range	°C	-40	-	85
Maximum DC Voltage	V	-	-	10
Maximum Input Power	dBm	-	-	10
Source Impedance (single ended) ⁽¹⁾	Ω	-	50	-
Load Impedance (single ended) ⁽¹⁾	Ω	-	50	-
Package type & size	SC0			
Length x Width	mm ²	-	20.0 x 9.8	-
Height	mm	-	-	1.8

ELECTRICAL SPECIFICATION				
PARAMETERS DESCRIPTION	UNIT	MINIMUM	TYPICAL	MAXIMUM
Center Frequency (Fo)	MHz	-	137.5	-
Insertion Loss at Fo	dB	-	25.0	26.5
Group Delay Variation at Fo ± 6.82 MHz	nsec	-	40	80
Absolute Delay at Fo	usec	-	3.12	-
Passband Ripple Variation at Fo ± 6.82 MHz	dB	-	0.5	1.0
Bandwidth at -1dB	MHz	13.90	14.00	-
Bandwidth at -3dB	MHz	-	14.25	-
Bandwidth at -45dB	MHz	-	15.48	15.60
Ultimate Rejection	dB	45	52	-
Temperature Coefficient	ppm/°C	-	-18	-

Notes : (1) With Matching Network (Ref. Testing Environment Circuit as shown below).
Those impedances could be modified with different impedance values and/or structures, if necessary.

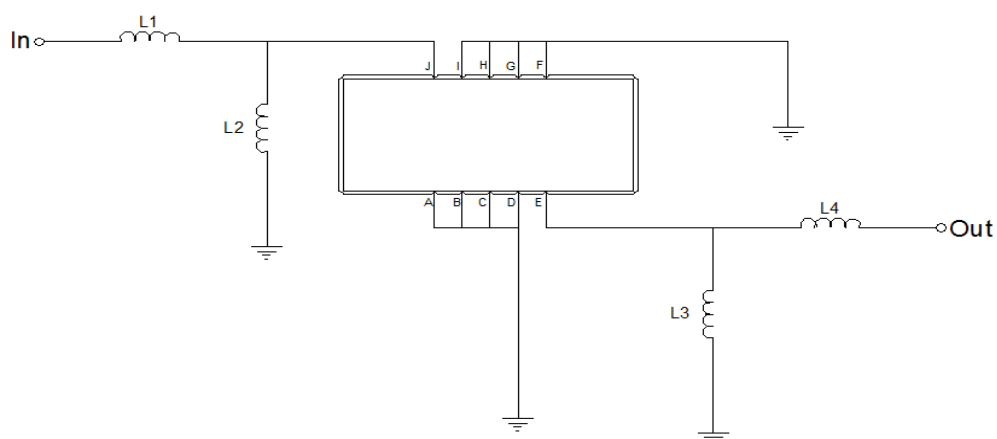
Package Dimensions



- ① **TRANSKO:** Brand
- ② **TF-013702:** Model Name
- ③ **X :** Date Code (Year)
- ④ **Y :** Date Code (Month)
- ⑤ **Z :** Date Code (Date)
- : Index Dot

Pin Description	
A, B, C, D, F, G, H, I	Ground
J	Input
E	Output

Testing Environment



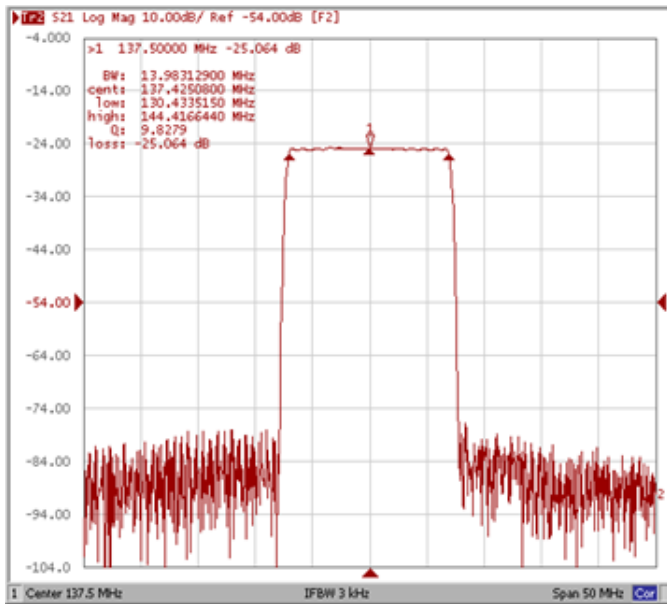
Test Fixture & Values	
Input	L1 = 22nH, L2 = 27nH
Output	L3 = 27nH, L4 = 22nH
Source/Load Impedance	50 Ω

Frequency Characteristics

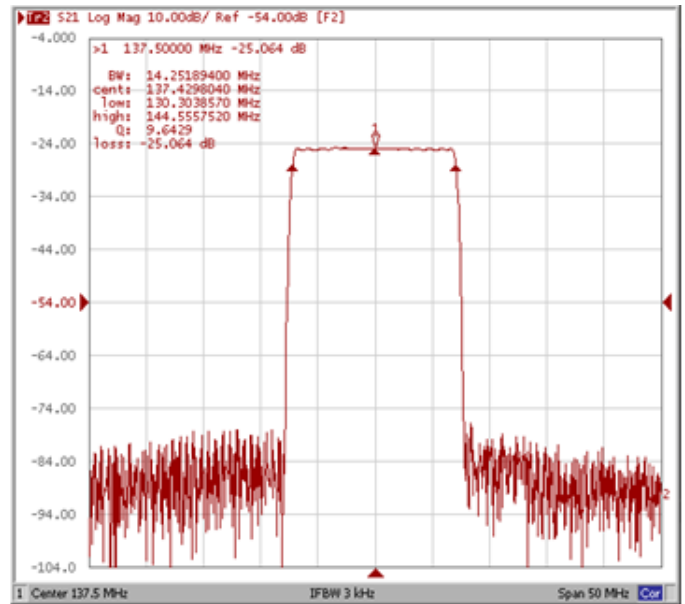
Frequency Response

Operating Temperature: +25°C

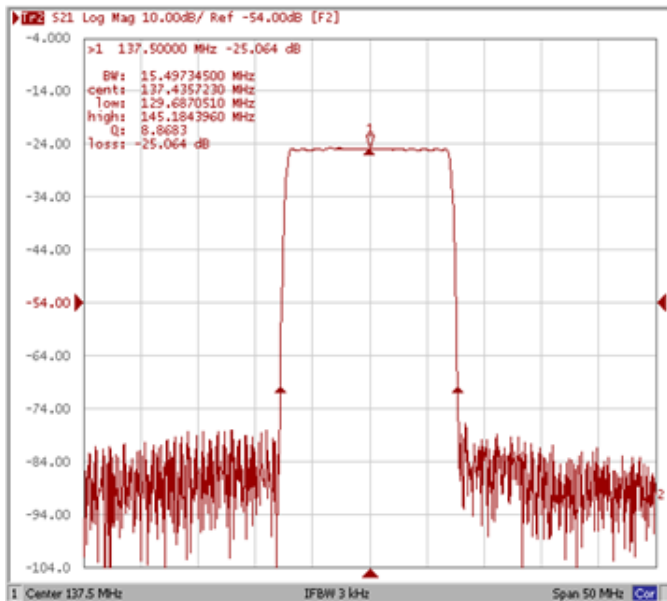
Bandwidth at -1.0 dB



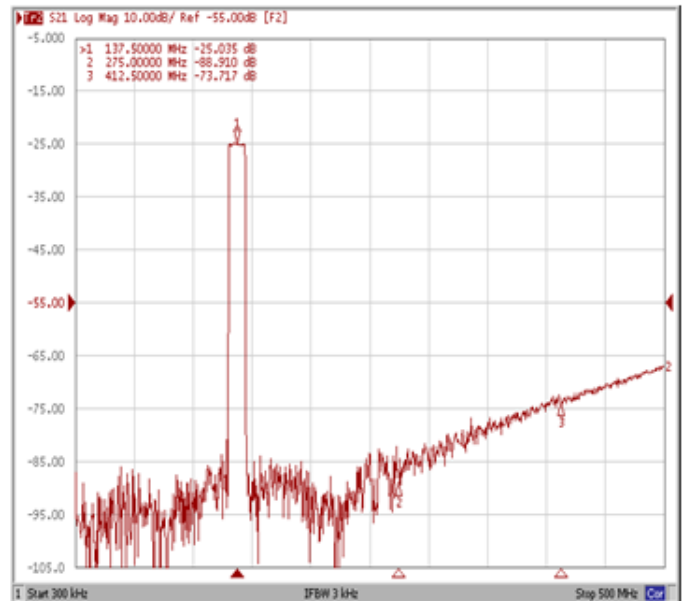
Bandwidth at -3.0 dB



Bandwidth at -45.0 dB



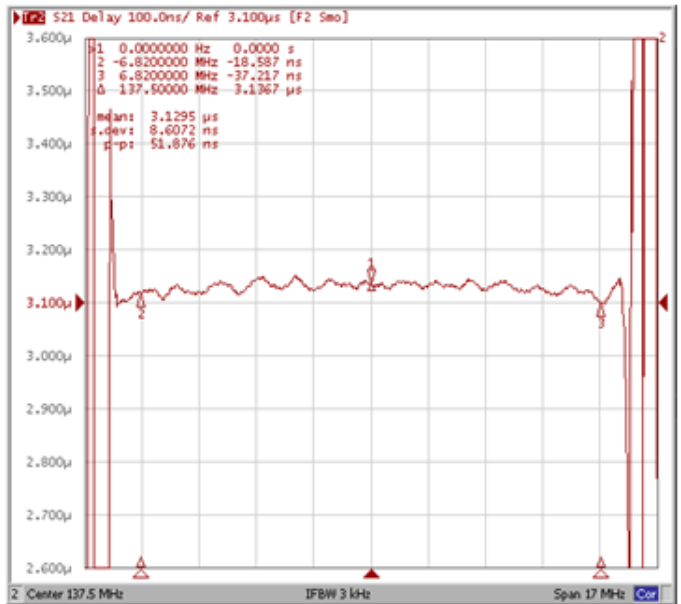
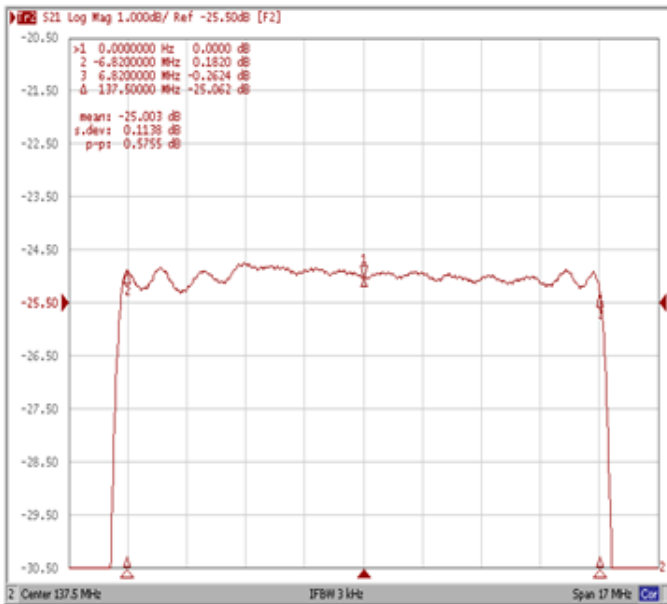
Wide-Band



Frequency Response

Ripple Variation Fo±6.82MHz

Group Delay Variation Fo±6.82MHz



Smith Chart

VSWR

