

- 70.00 MHz IF SAW Filter / 11.01 MHz Bandwidth
- Revision 0: June 2013

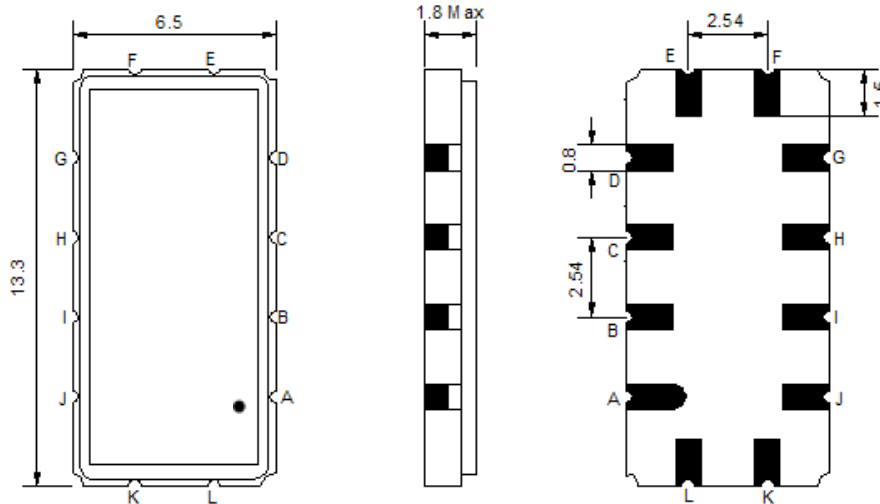
Electrical Characteristics

MAXIMUM RATING				
PARAMETERS DESCRIPTION	UNIT	MINIMUM	TYPICAL	MAXIMUM
Operation Temperature Range	°C	-30	-	80
Storage Temperature Range	°C	-45	-	85
Maximum DC Voltage	V	-	-	10
Maximum Input Power	dBm	-	-	10
Source Impedance (single ended) ⁽¹⁾	Ω	-	50	-
Load Impedance (single ended) ⁽¹⁾	Ω	-	50	-
Package type & size	S90			
Length x Width	mm ²	-	13.3 x 6.5	-
Height	mm	-	-	1.8

ELECTRICAL SPECIFICATION				
PARAMETERS DESCRIPTION	UNIT	MINIMUM	TYPICAL	MAXIMUM
Center Frequency (Fo)	MHz	-	70.00	-
Insertion Loss at Fo	dB	-	13.00	15.00
Group Delay Variation at Fo ± 4.5 MHz	nsec	-	45	100
Absolute Delay at Fo	usec	-	1.3	-
Passband Ripple Variation at Fo ± 4.5 MHz	dB _{p-p}	-	0.6	1.0
Bandwidth at -1dB	MHz	10.50	11.01	-
Bandwidth at -3dB	MHz	11.00	11.61	-
Bandwidth at -40dB	MHz	-	14.20	15.00
Ultimate Rejection	dB	40	45	-
Temperature Coefficient	ppm/°C	-	-86	-

Notes : (1) With Matching Network (Ref. Testing Environment Circuit as shown below).
Those impedances could be modified with different impedance values and/or structures, if necessary.

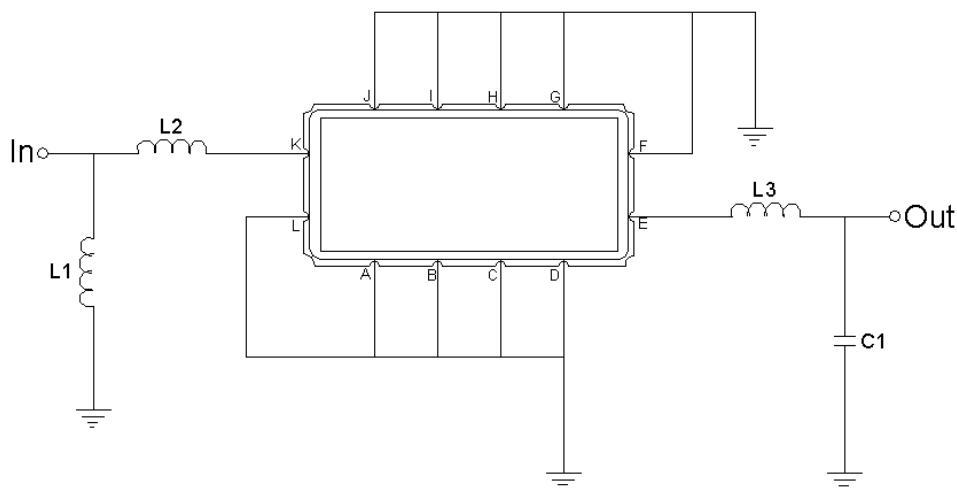
Package Dimensions



- ① **TRANSKO:** Brand
- ② **TF-007009:** Model Name
- ③ **X :** Date Code (Year)
- ④ **Y :** Date Code (Month)
- ⑤ **Z :** Date Code (Date)
- : Index Dot

Pin Description	
A, B, C, D, F, G, H, I, J, L	Ground
K	Input
E	Output

Testing Environment



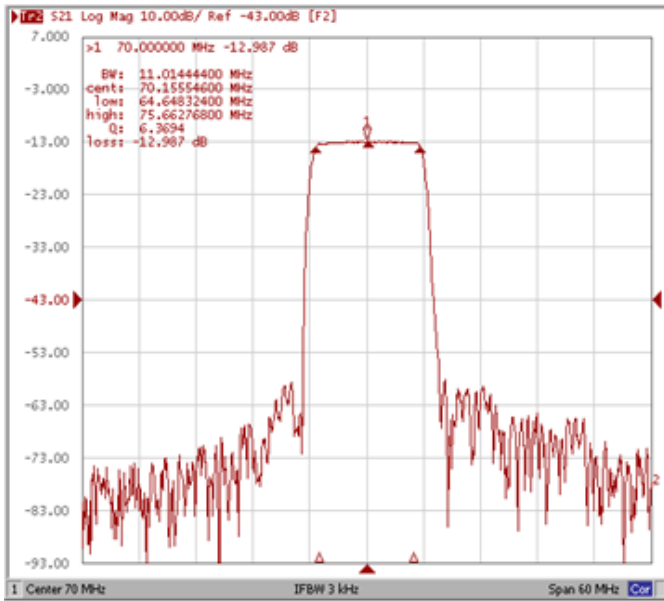
Test Fixture & Values	
Input	L1 = 56nH, L2 = 12nH
Output	L3 = 120nH, C2= 62pF
Source/Load Impedance	50 Ω

Frequency Characteristics

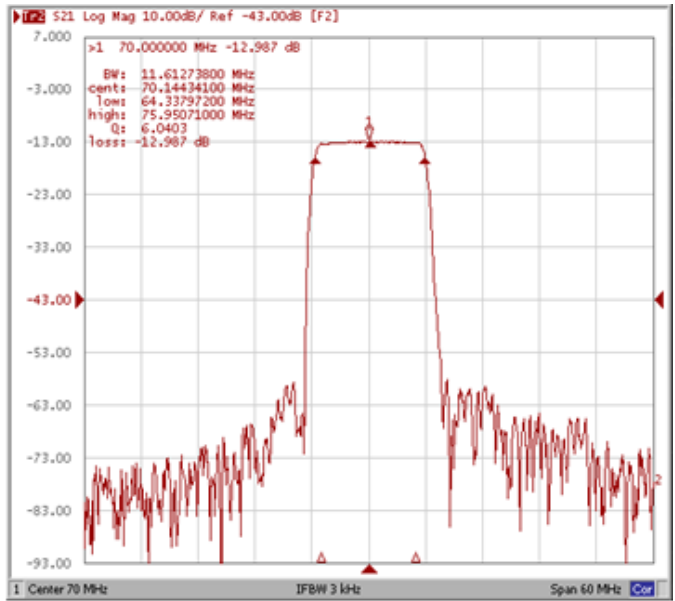
Frequency Response

Operating Temperature: +25°C

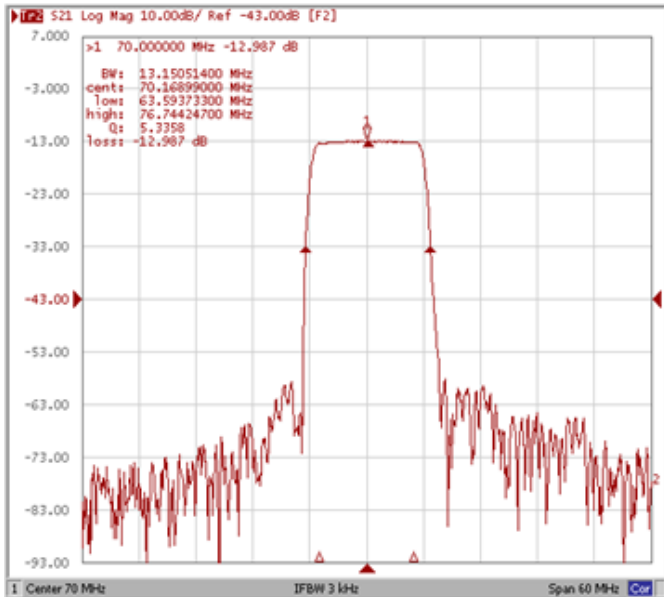
Bandwidth at -1.0 dB



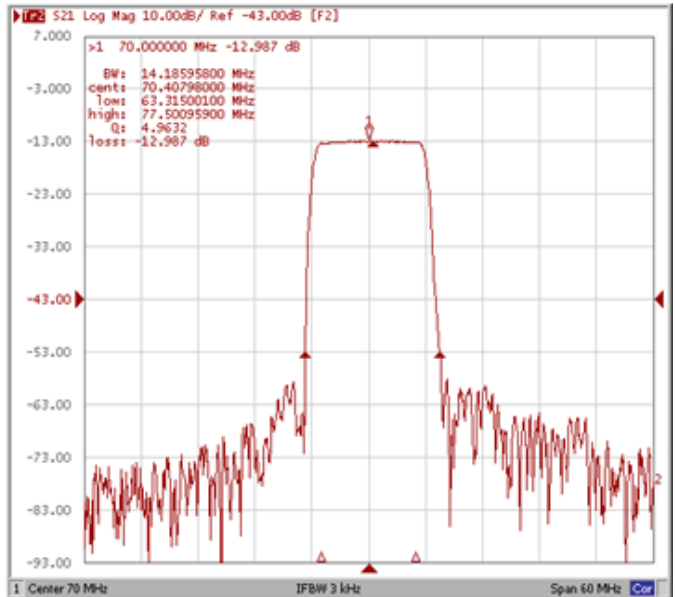
Bandwidth at -3.0 dB



Bandwidth at -20.0 dB

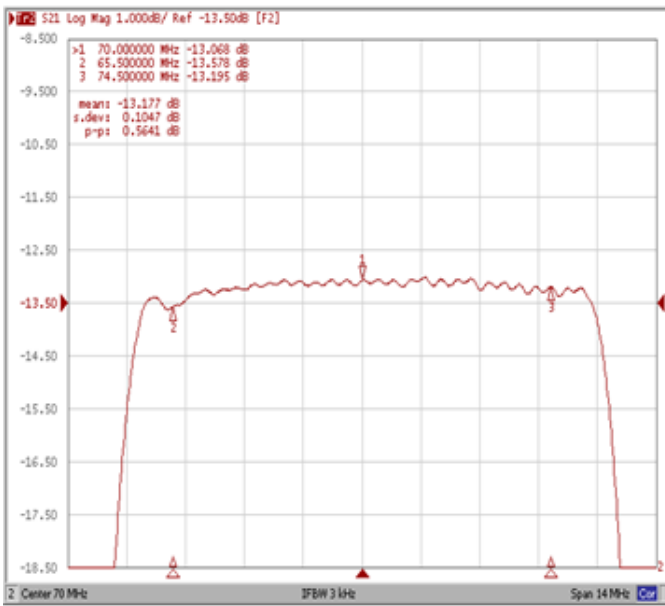


Bandwidth at -40.0 dB

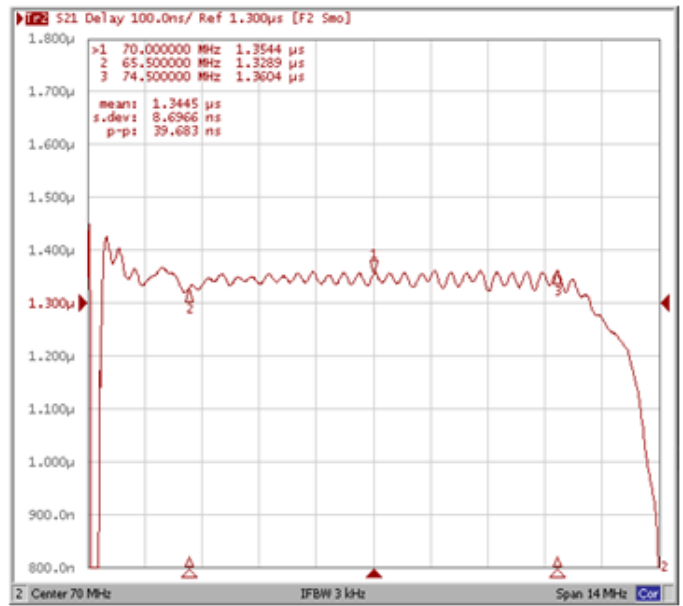


Frequency Response

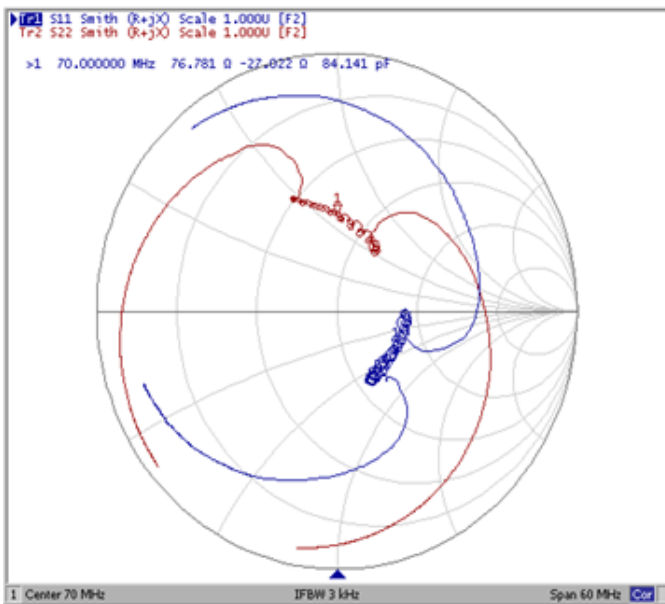
Ripple Variation $F_0 \pm 4.5\text{MHz}$



Group Delay Variation $F_0 \pm 4.5\text{MHz}$



Smith Chart



VSWR

