

- 45.00 MHz IF SAW Filter / 9.38 MHz Bandwidth
- Revision 0: 29 Nov. 2012

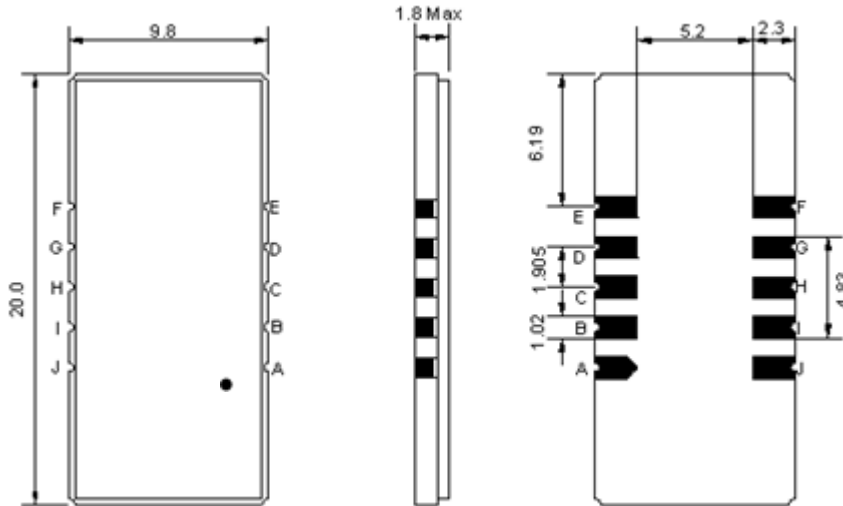
Electrical Characteristics

MAXIMUM RATING				
PARAMETERS DESCRIPTION	UNIT	MINIMUM	TYPICAL	MAXIMUM
Operation Temperature Range	°C	-	25	-
Storage Temperature Range	°C	-40	-	85
Maximum DC Voltage	V	-	-	10
Maximum Input Power	dBm	-	-	10
Source Impedance (single ended) ⁽¹⁾	Ω	-	50	-
Load Impedance (single ended) ⁽¹⁾	Ω	-	50	-
Package type & size	SC0			
Length x Width	mm ²	-	20.0 x 9.8	-
Height	mm	-	-	1.8

ELECTRICAL SPECIFICATION				
PARAMETERS DESCRIPTION	UNIT	MINIMUM	TYPICAL	MAXIMUM
Center Frequency (Fo)	MHz	-	45.0	-
Insertion Loss at Fo	dB	-	25.0	26.5
Group Delay Variation at Fo ± 4.50 MHz	nsec	-	50	100
Absolute Delay at Fo	usec	-	2.24	-
Passband Ripple Variation at Fo ± 4.50 MHz	dB	-	0.6	1.2
Bandwidth at -1dB	MHz	9.20	9.38	-
Bandwidth at -3dB	MHz	-	9.68	-
Bandwidth at -45dB	MHz	-	10.97	11.10
Ultimate Rejection	dB	45	48	-
Temperature Coefficient	ppm/°C	-	-72	-

Notes : (1) With Matching Network (Ref. Testing Environment Circuit as shown below).
Those impedances could be modified with different impedance values and/or structures, if necessary.

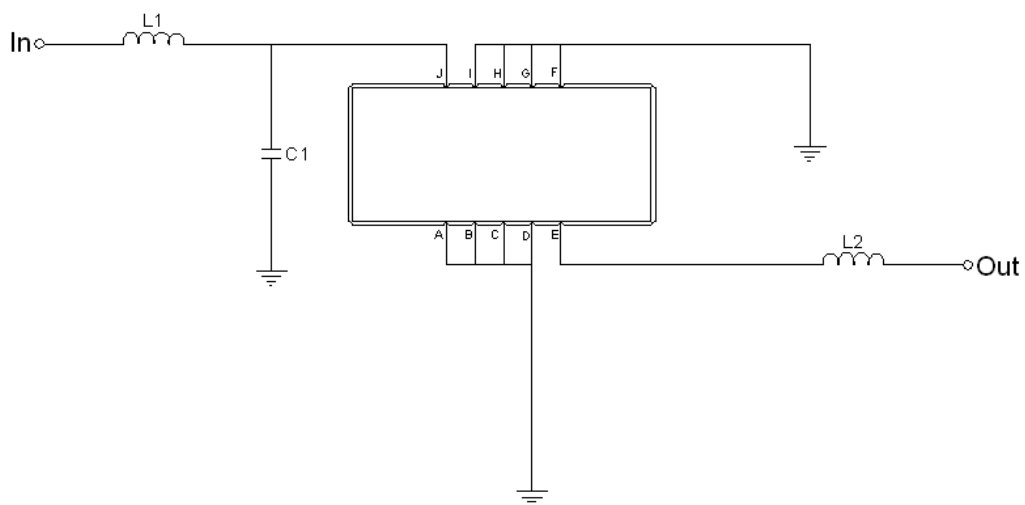
Package Dimensions



- ① **TRANSKO:** Brand
- ② **TF-004501:** Model Name
- ③ **X :** Date Code (Year)
- ④ **Y :** Date Code (Month)
- ⑤ **Z :** Date Code (Date)
- : Index Dot

Pin Description	
A, B, C, D, F, G, H, I	Ground
J	Input
E	Output

Testing Environment



Test Fixture & Values	
Input	L1 = 220nH, C1=39pF
Output	L2 = 220nH
Source/Load Impedance	50 Ω

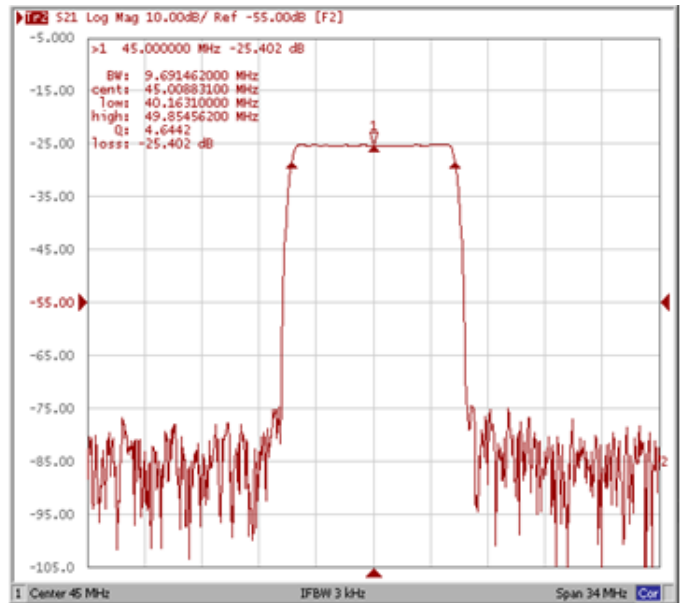
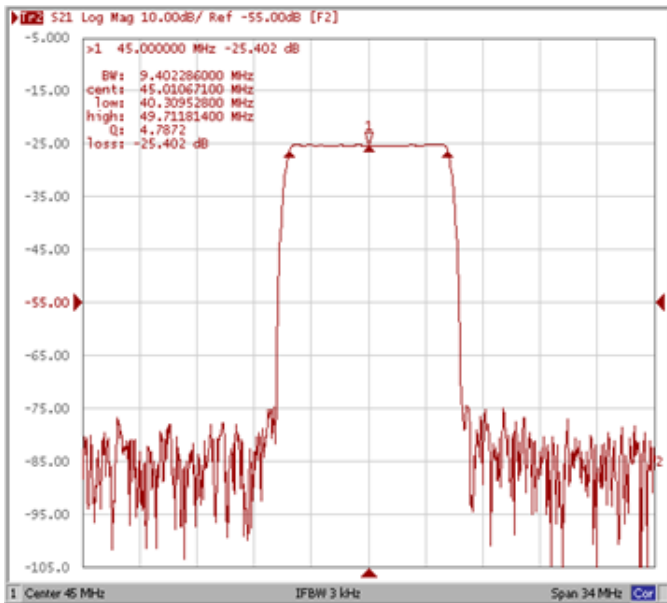
Frequency Characteristics

Frequency Response

Operating Temperature: +25°C

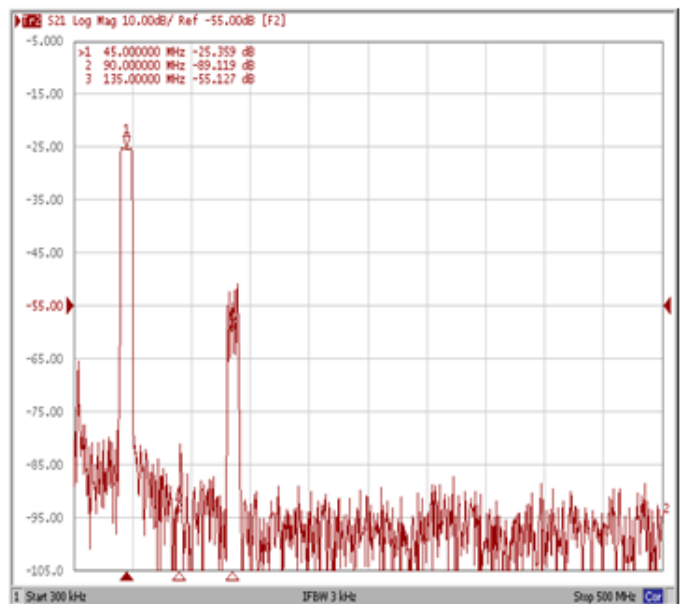
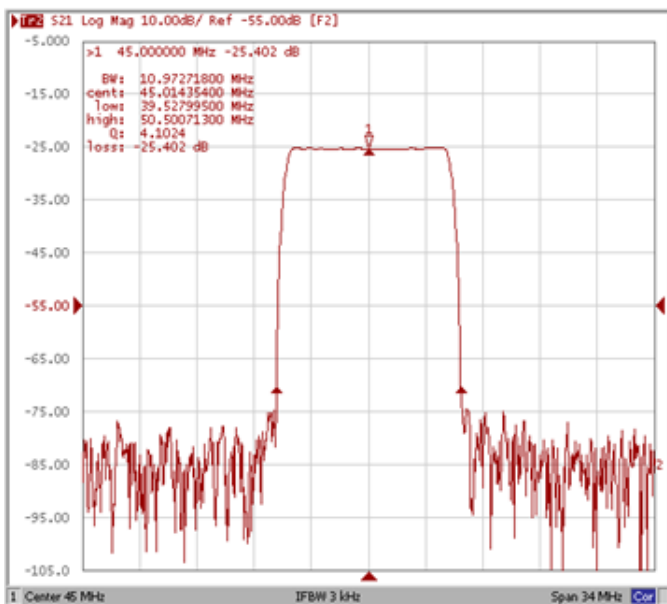
Bandwidth at -1.0 dB

Bandwidth at -3.0 dB



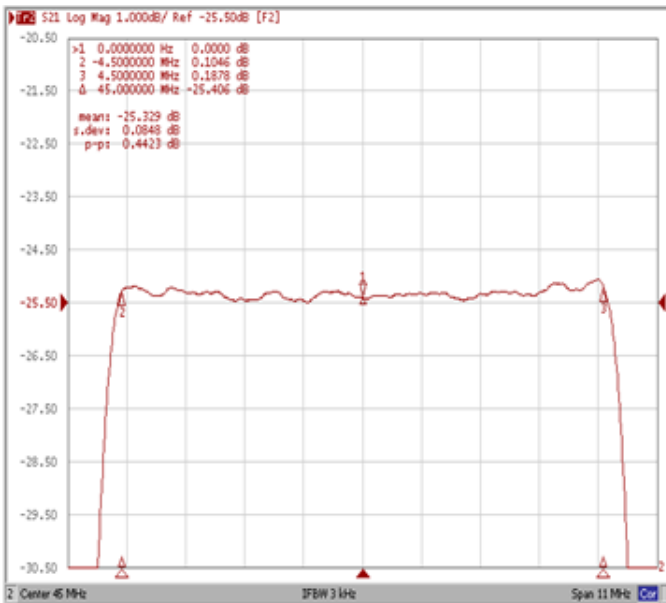
Bandwidth at -45.0 dB

Wide-Band

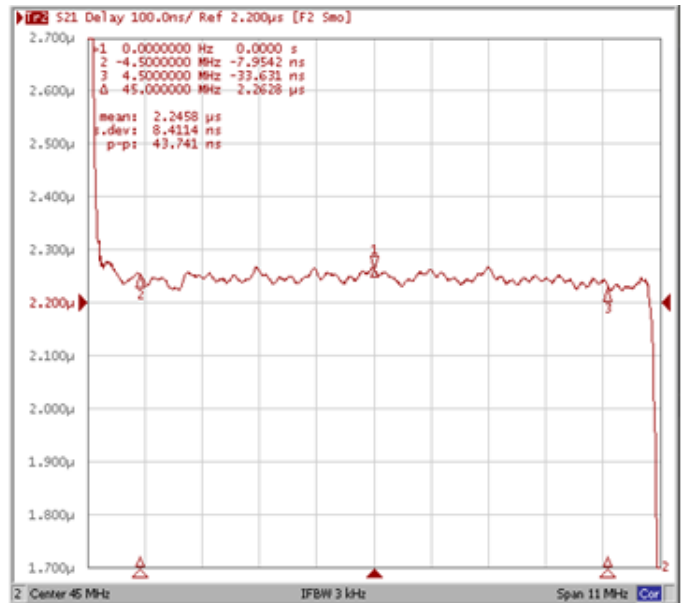


Frequency Response

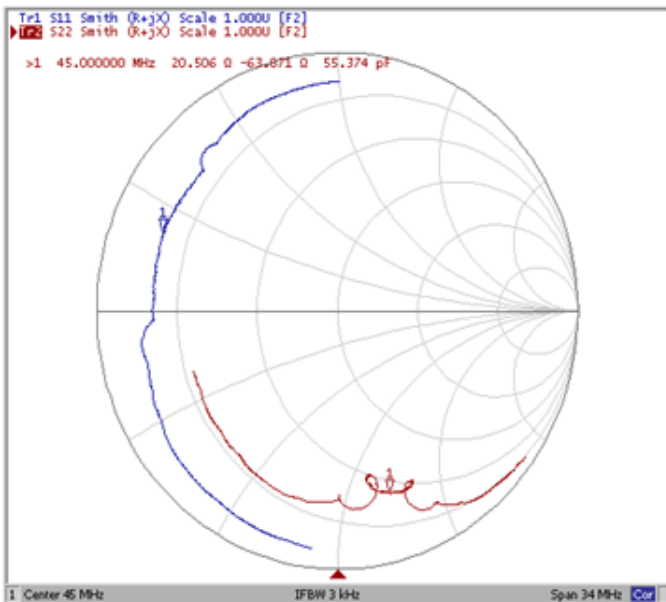
Ripple Variation Fo±4.50MHz



Group Delay Variation Fo±4.50MHz



Smith Chart



VSWR

