

- 70.0 MHz IF SAW Filter / 20.1 MHz Bandwidth
- Revision 1: 29. Oct. 2007

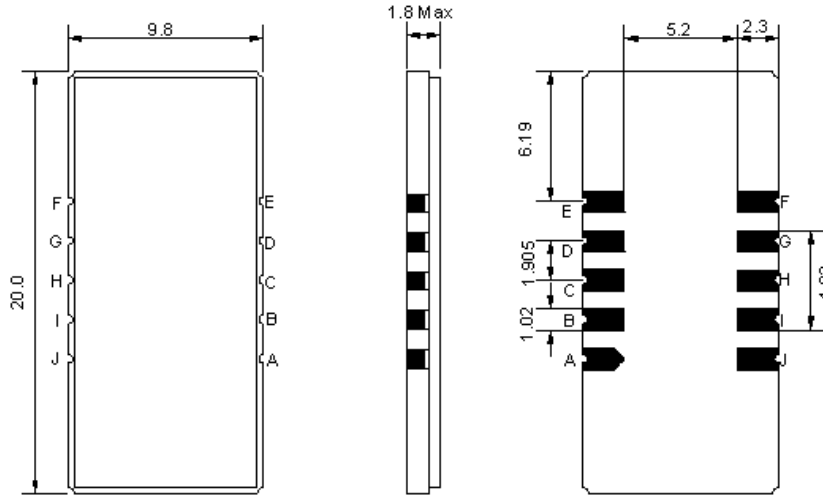
Electrical Characteristics

MAXIMUM RATING				
PARAMETERS DESCRIPTION	UNIT	MINIMUM	TYPICAL	MAXIMUM
Operation Temperature Range	°C	-30	-	80
Storage Temperature Range	°C	-40	-	85
Maximum DC Voltage	V	-	-	10
Maximum Input Power	dBm	-	-	10
Source Impedance (single ended) ⁽¹⁾	Ω	-	50	-
Load Impedance (single ended) ⁽¹⁾	Ω	-	50	-
Package type & size	D1			
Length x Width	mm ²	-	20.0 x 9.8	-
Height	mm	-	-	1.8

ELECTRICAL SPECIFICATION				
PARAMETERS DESCRIPTION	UNIT	MINIMUM	TYPICAL	MAXIMUM
Center Frequency (Fo)	MHz	69.95	70.05	70.15
Insertion Loss at Fo	dB	-	22.5	24.0
Amplitude Ripple Variation at Fo ±9.75 MHz	dB _{p-p}	-	0.6	1.0
Group Delay Variation at Fo ±9.75 MHz	nsec	-	60	100
Absolute Delay at Fo	μsec	-	2.35	-
Temperature Coefficient	ppm/°C	-	-72	-
Bandwidth at -1.0 dB	MHz	-	20.10	-
Bandwidth at -3.0 dB	MHz	20.30	20.40	-
Bandwidth at -40.0 dB	MHz	-	21.70	21.80
Lower Sidelobe	dB	50	54	-
Upper Sidelobe	dB	50	53	-

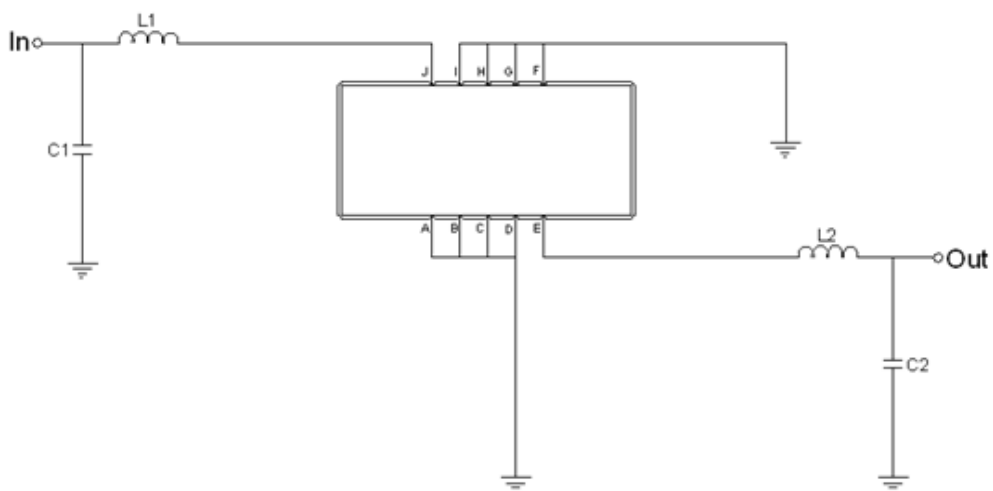
Notes : (1) With Matching Network (Ref. Testing Environment Circuit as shown below).
Those impedances could be modified with different impedance values and/or structures, if necessary.

Package Dimensions



Pin Description	
A, B, C, D, F, G, H, I	Ground
J	Input
E	Output

Testing Environment



Test Fixture & Values	
Input	L1=220nH, C1=24pF
Output	L2=180nH, C2=0pF
Source/Load Impedance	50 Ω

Frequency Characteristics

Frequency Response

