

- 456.0 MHz IF SAW Filter / 7.6MHz Bandwidth
- Revision 1: 29. Oct. 2007

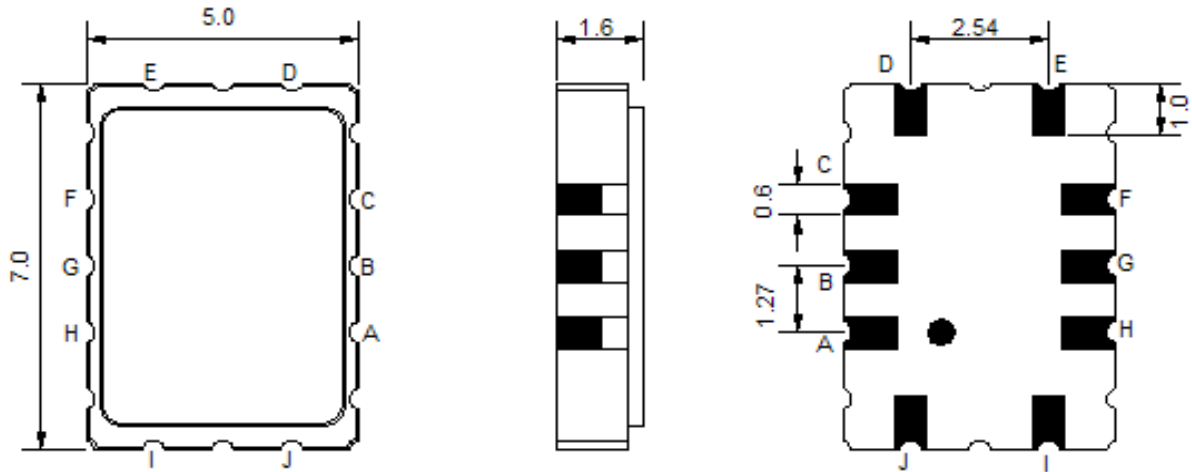
Electrical Characteristics

MAXIMUM RATING				
PARAMETERS DESCRIPTION	UNIT	MINIMUM	TYPICAL	MAXIMUM
Operating Temperature Range	°C	-30	-	80
Storage Temperature Range	°C	-40	-	85
Maximum DC Voltage	V	-	-	10
Maximum Input Power	dBm	-	-	10
Source Impedance (balanced) ⁽¹⁾	Ω	-	200	-
Load Impedance (balanced) ⁽¹⁾	Ω	-	200	-
Package type & size	S			
Length x Width	mm ²	-	7.0 x 5.0	-
Height	mm	-	-	1.6

ELECTRICAL SPECIFICATION				
PARAMETERS DESCRIPTION	UNIT	MINIMUM	TYPICAL	MAXIMUM
Center Frequency (Fo)	MHz	455.7	456.0	456.3
Insertion Loss at Fo	dB	-	14.5	16.5
Amplitude Ripple Variation	dB _{p-p}	-	1.0	1.5
Group Delay Variation	nsec	-	120	200
Absolute Delay at Fo	μsec	-	0.52	-
Temperature Coefficient	ppm/°C	-	-0.03	-
Bandwidth at -3.0 dB	MHz	7.0	7.6	-
Bandwidth at -40.0 dB	MHz	-	12.6	14.0
Relative Attenuation:				
Lower Sidelobe	dB	40	45	-
Upper Sidelobe	dB	40	43	-

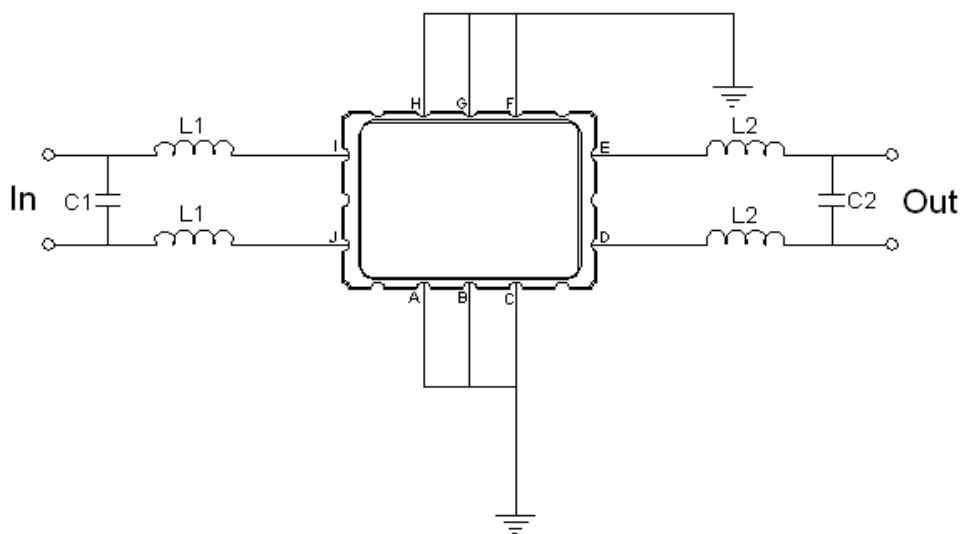
Notes : (1) With Matching Network (Ref. Testing Environment Circuit as shown below).
Those impedances could be modified with different impedance values and/or structures, if necessary.

Package Dimensions



Pin Description	
I	Input +
J	Input -
D	Output +
E	Output -
A, B, C, F, G, H	Ground

Testing Environment



Test Fixture & Values	
Input	L1=30nH , C1=7pF
Output	L2=24nH , C2=9pF
Source/Load Impedance	200 Ω

Frequency Characteristics

Frequency Response

