

- 44.0 MHz IF SAW Filter / 5.40 MHz Bandwidth
- Revision 1: 29. Oct. 2007

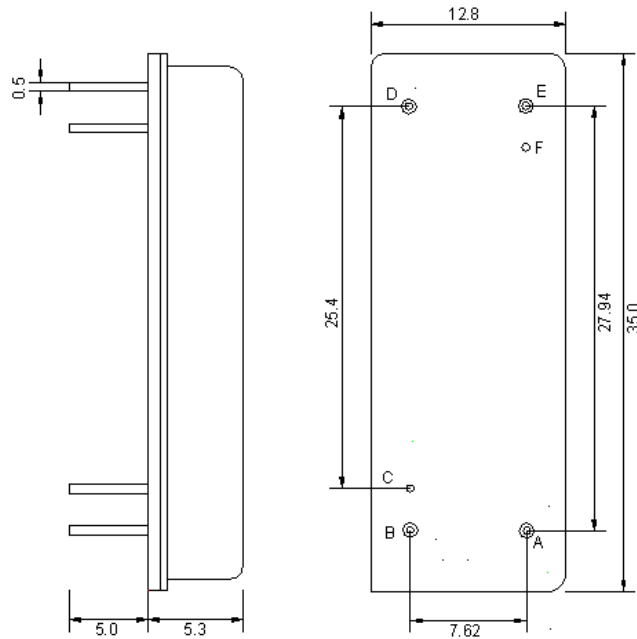
Electrical Characteristics

MAXIMUM RATING				
PARAMETERS DESCRIPTION	UNIT	MINIMUM	TYPICAL	MAXIMUM
Operation Temperature Range	°C	-30	-	80
Storage Temperature Range	°C	-40	-	85
Maximum DC Voltage	V	-	-	10
Maximum Input Power	dBm	-	-	10
Source Impedance (single ended) ⁽¹⁾	Ω	-	50	-
Load Impedance (single ended) ⁽¹⁾	Ω	-	50	-
Package type & size	F			
Length x Width	mm ²	-	35.0 x 12.8	-
Height	mm	-	-	5.3

ELECTRICAL SPECIFICATION				
PARAMETERS DESCRIPTION	UNIT	MINIMUM	TYPICAL	MAXIMUM
Center Frequency (Fo)	MHz	43.95	44.0	44.05
Insertion Loss at Fo	dB	-	24.5	25.5
Amplitude Ripple Variation	dB _{p-p}	-	0.5	0.8
Group Delay Variation	nsec	-	65	100
Absolute Delay at Fo	μsec	-	4.07	-
Temperature Coefficient	ppm/°C	-	-94	-
Bandwidth at -1.0 dB	MHz	5.4	5.5	-
Bandwidth at -3.0 dB	MHz	5.6	5.68	-
Bandwidth at -40.0 dB	MHz	-	6.45	6.6
Ultimate Rejection	dB	45	50	-

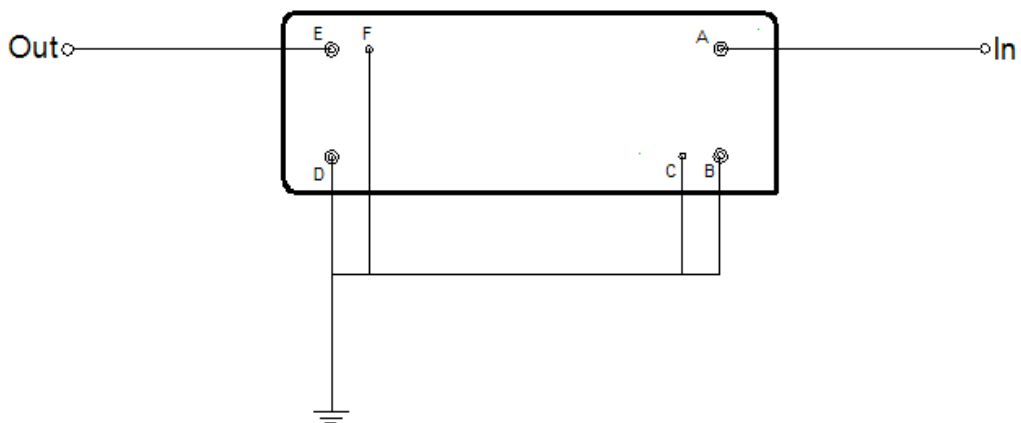
Notes : (1) With Matching Network (Ref. Testing Environment Circuit as shown below).
Those impedances could be modified with different impedance values and/or structures, if necessary.

Package Dimensions



Pin Description	
B, C, D, F	Ground
A	Input
E	Output

Testing Environment



Source & Load Impedance: 50 Ω

Frequency Characteristics

Frequency Response

