

- 264.00 MHz IF SAW Filter / 15.35 MHz Bandwidth
- Revision 0: 24. Aug. 2009

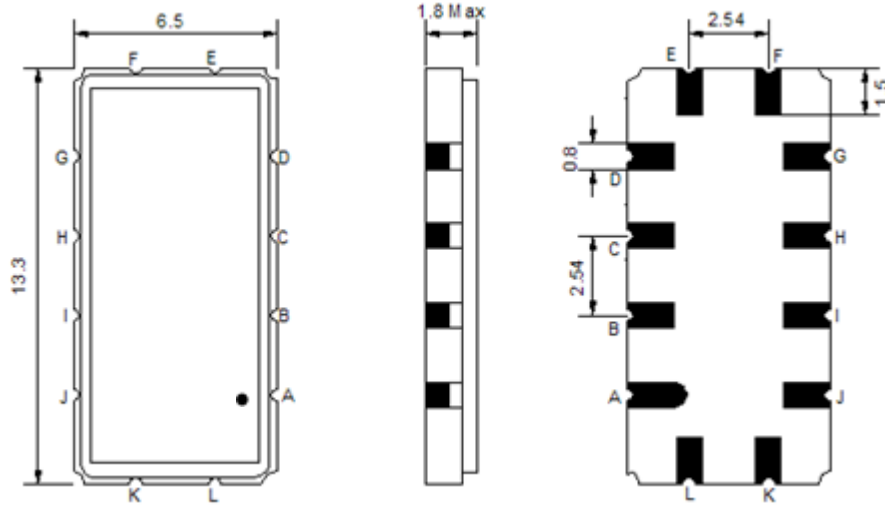
Electrical Characteristics

| MAXIMUM RATING | | | | |
|--|-----------------|---------|------------|---------|
| PARAMETERS DESCRIPTION | UNIT | MINIMUM | TYPICAL | MAXIMUM |
| Operation Temperature Range | °C | - | 25 | - |
| Storage Temperature Range | °C | -40 | - | 85 |
| Maximum DC Voltage | V | - | - | 10 |
| Maximum Input Power | dBm | - | - | 10 |
| Source Impedance (single ended) ⁽¹⁾ | Ω | - | 50 | - |
| Load Impedance (single ended) ⁽¹⁾ | Ω | - | 50 | - |
| Package type & size | V | | | |
| Length x Width | mm ² | - | 13.3 x 6.5 | - |
| Height | mm | - | - | 1.8 |

| ELECTRICAL SPECIFICATION | | | | |
|--------------------------|--------|---------|---------|---------|
| PARAMETERS DESCRIPTION | UNIT | MINIMUM | TYPICAL | MAXIMUM |
| Center Frequency (Fo) | MHz | - | 264.0 | - |
| Insertion Loss at Fo | dB | - | 25.5 | 28.0 |
| Group Delay Variation | ns | - | 38 | 80 |
| Absolute Delay at Fo | us | - | 2.02 | - |
| Amplitude Ripple | dB | - | 0.60 | 1.00 |
| Bandwidth at -1dB | MHz | 15.00 | 15.35 | - |
| Bandwidth at -3dB | MHz | - | 15.78 | - |
| Bandwidth at -25dB | MHz | - | 17.25 | 17.50 |
| Bandwidth at -40dB | MHz | - | 17.66 | 17.90 |
| Relative Attenuation | | | | |
| Lower Sidelobe | dB | 48 | 52 | - |
| Upper Sidelobe | dB | 48 | 52 | - |
| Temperature Coefficient | ppm/°C | - | -20 | - |

Notes : (1) With Matching Network (Ref. Testing Environment Circuit as shown below).
Those impedances could be modified with different impedance values and/or structures, if necessary.

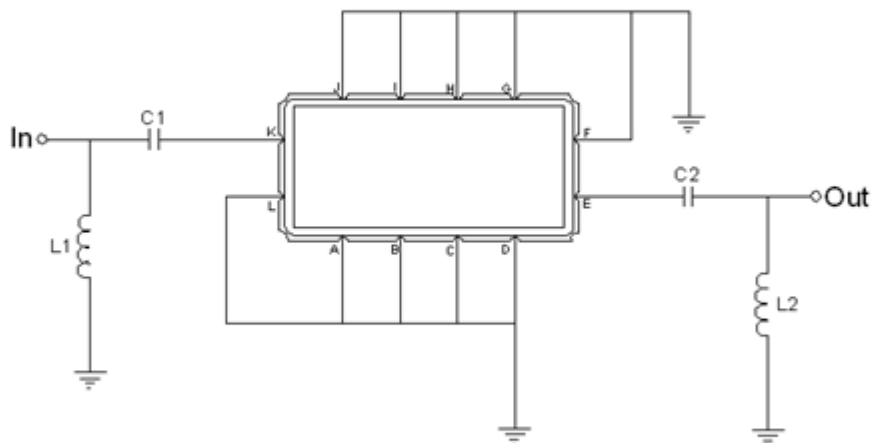
Package Dimensions



- ① **TRANSKO:** Brand
- ② **TA26415A:** Model Name
- ③ **X :** Date Code (Year)
- ④ **Y :** Date Code (Month)
- ⑤ **Z :** Date Code (Date)
- : Index Dot

| Pin Description | |
|------------------------------|--------|
| A, B, C, D, F, G, H, I, J, L | Ground |
| K | Input |
| E | Output |

Testing Environment



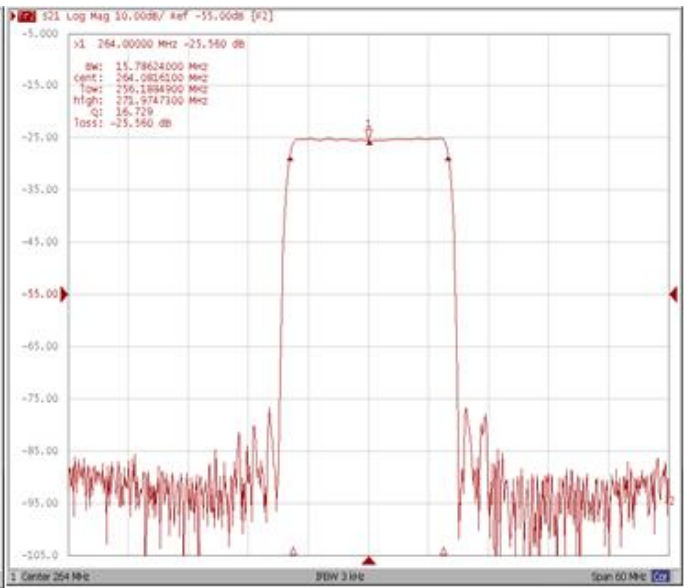
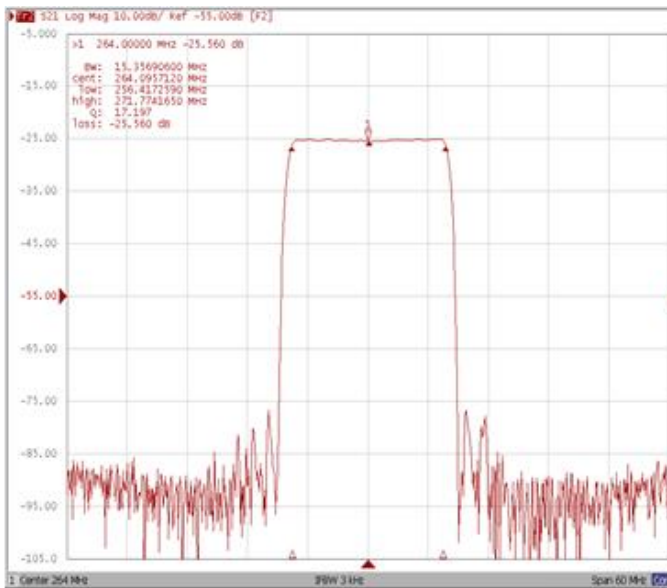
| Test Fixture & Values | |
|------------------------------|--------------------------|
| Input | L1 = 8.2 nH , C1 = 75 pF |
| Output | L2 = 18 nH , C2 = 33 pF |
| Source/Load Impedance | 50 Ω |

Frequency Characteristics

Frequency Response

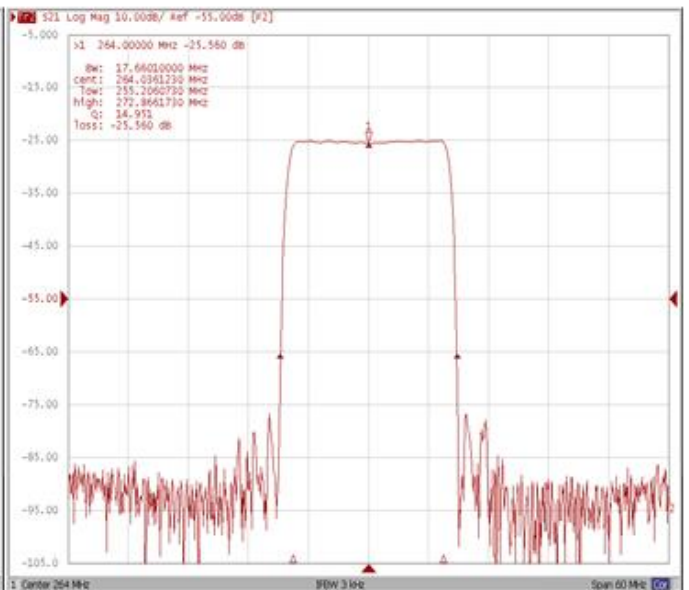
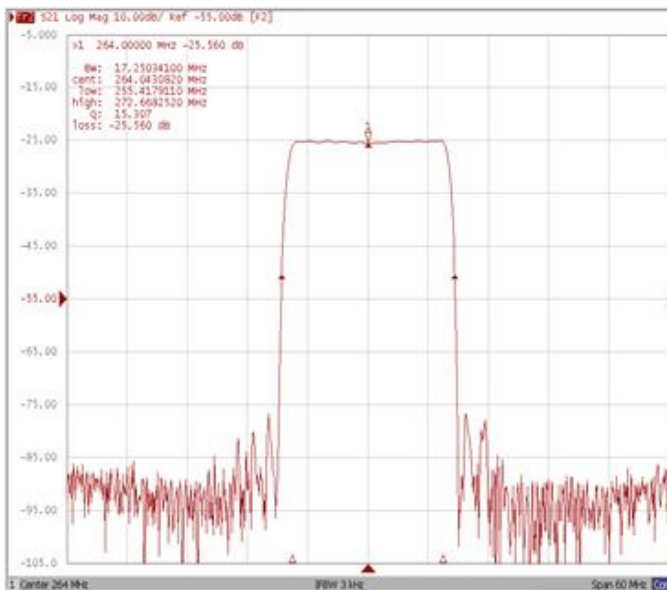
Bandwidth at -1.0 dB

Bandwidth at -3.0 dB



Bandwidth at -25.0 dB

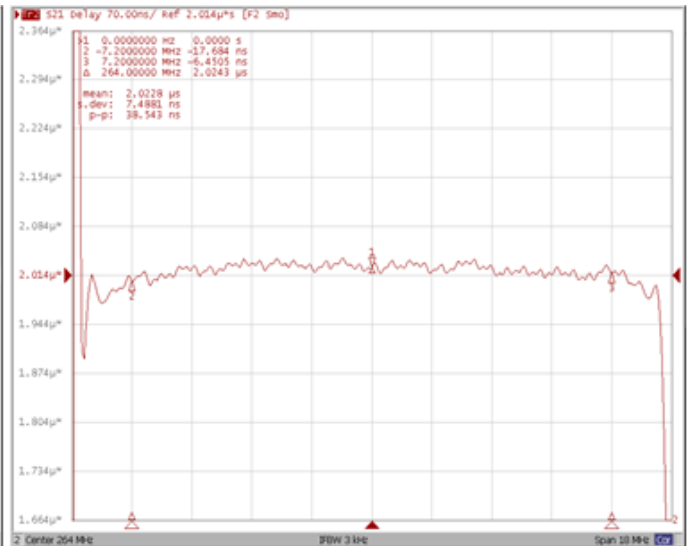
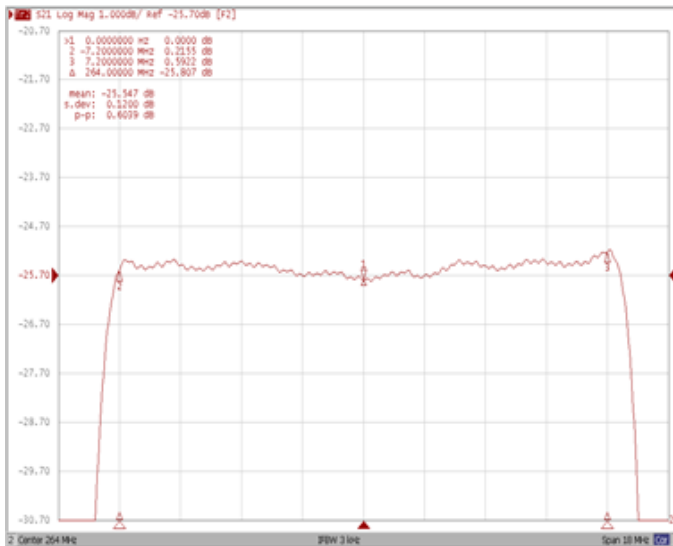
Bandwidth at -40.0 dB



Frequency Response

Ripple Variation

Group Delay Variation



Smith Chart

VSWR

