

- 190.0 MHz IF SAW Filter / 26.45 MHz Bandwidth
- Revision 0: 21. Apr. 2009

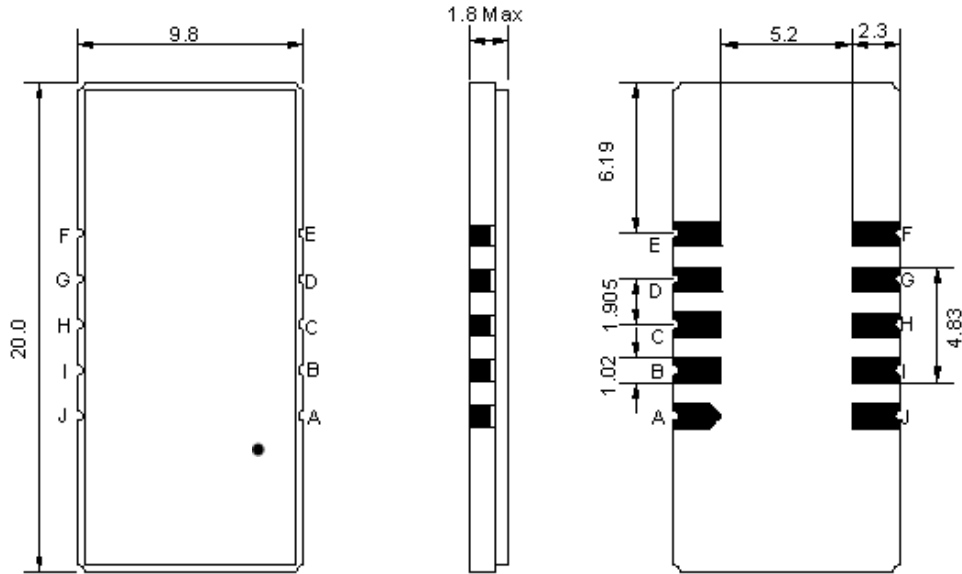
Electrical Characteristics

MAXIMUM RATING				
PARAMETERS DESCRIPTION	UNIT	MINIMUM	TYPICAL	MAXIMUM
Operation Temperature Range	°C	-10	-	70
Storage Temperature Range	°C	-40	-	85
Maximum DC Voltage	V	-	-	10
Maximum Input Power	dBm	-	-	10
Source Impedance (single ended) ⁽¹⁾	Ω	-	50	-
Load Impedance (single ended) ⁽¹⁾	Ω	-	50	-
Package type & size	D1			
Length x Width	mm ²	-	20.0 x 9.8	-
Height	mm	-	-	1.8

ELECTRICAL SPECIFICATION				
PARAMETERS DESCRIPTION	UNIT	MINIMUM	TYPICAL	MAXIMUM
Center Frequency (Fo)	MHz	-	190.0	-
Insertion Loss at Fo	dB	-	29.90	31.50
Group Delay Variation (Fo±12.5MHz)	nsec	-	25	50
Absolute Delay	usec	-	2.52	-
Passband Ripple (Fo±12.5MHz)	dB	-	0.45	1.00
Bandwidth at -1dB	MHz	26.20	26.45	-
Bandwidth at -3dB	MHz	-	26.85	-
Bandwidth at -40dB	MHz	-	28.55	28.70
Bandwidth at -50dB	MHz	-	28.75	-
Ultimate Rejection	dB	50	55	
Temperature coefficient	ppm/°C	-	-20	-

Notes : (1) With Matching Network (Ref. Testing Environment Circuit as shown below).
Those impedances could be modified with different impedance values and/or structures, if necessary.

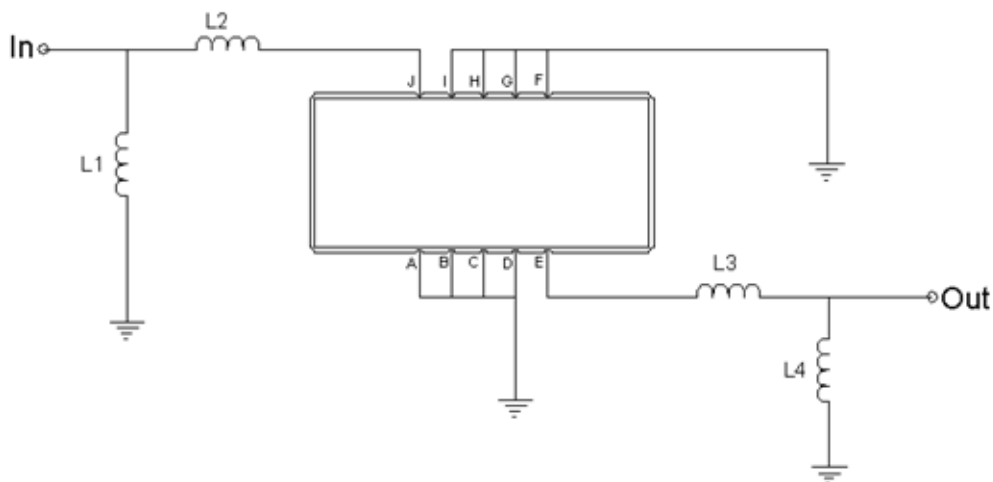
Package Dimensions



- ① **TRANSKO:** Brand
- ② **TA19026A:** Model Name
- ③ **X :** Date Code (Year)
- ④ **Y :** Date Code (Month)
- ⑤ **Z :** Date Code (Date)
- : Index Dot

Pin Description	
A, B, C, D, F, G, H, I	Ground
J	Input
E	Output

Testing Environment



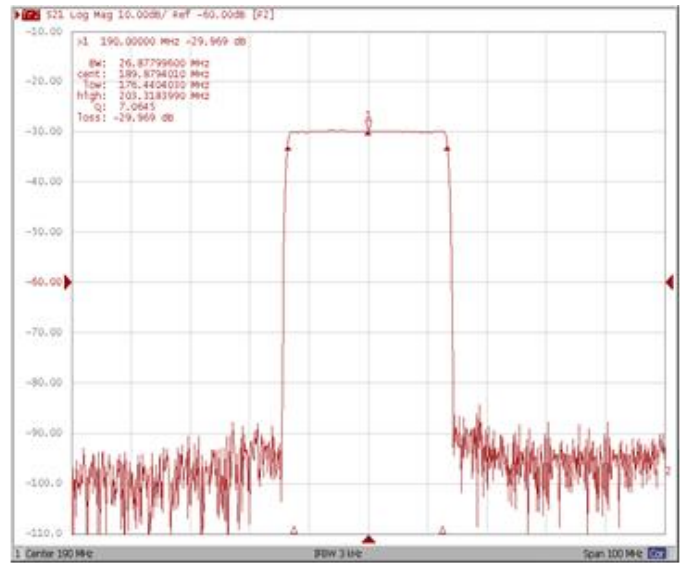
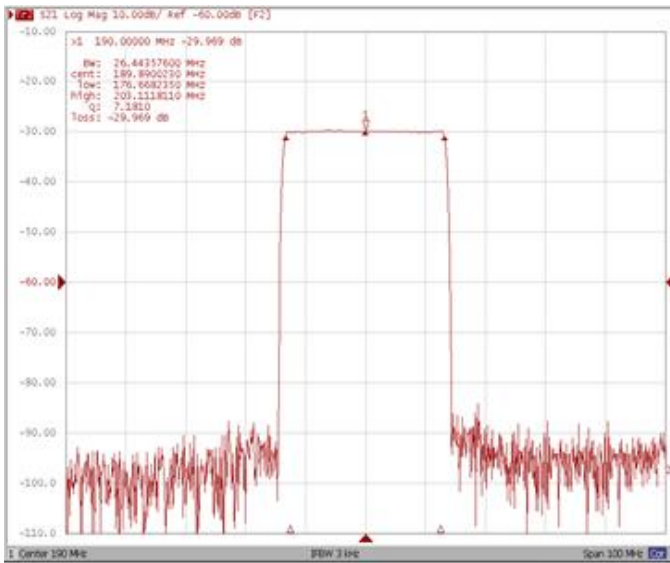
Test Fixture & Values	
Input	L1=22nH, L2=10nH
Output	L3=5.6nH, L4=22nH
Source/Load Impedance	50 Ω

Frequency Characteristics

Frequency Response

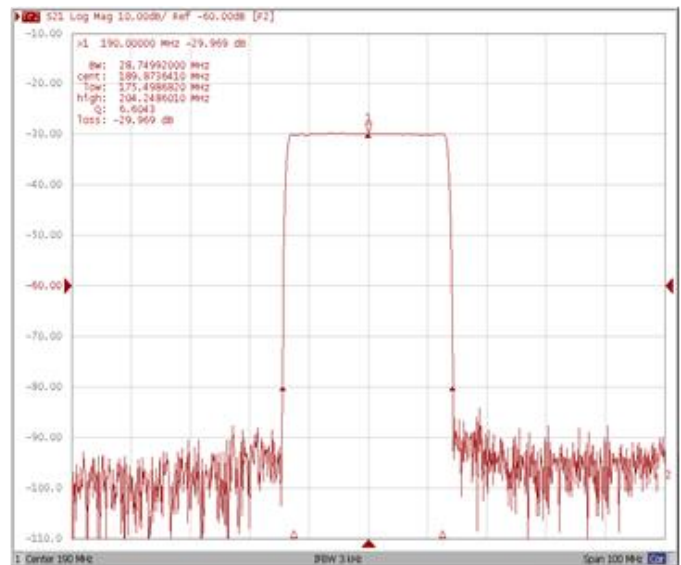
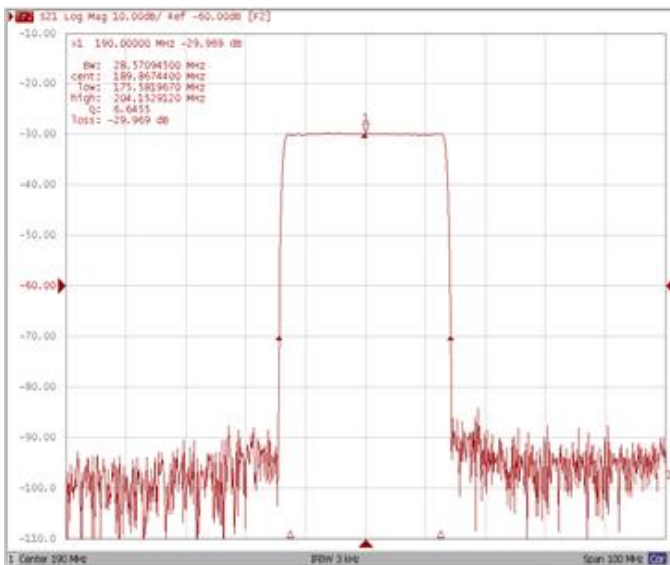
Bandwidth at -1.0 dB

Bandwidth at -3.0 dB



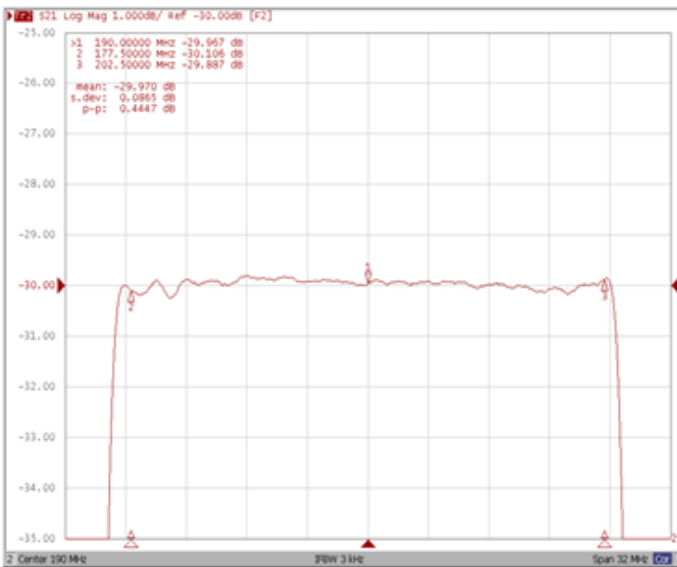
Bandwidth at -40.0 dB

Bandwidth at -50.0 dB

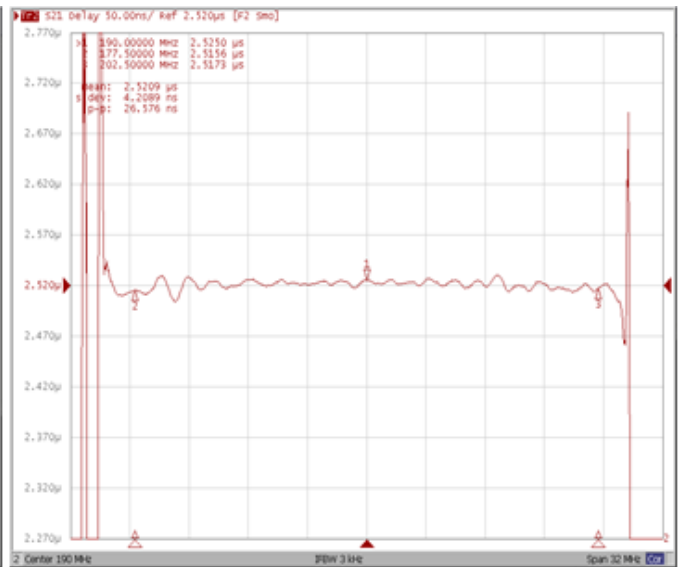


Frequency Response

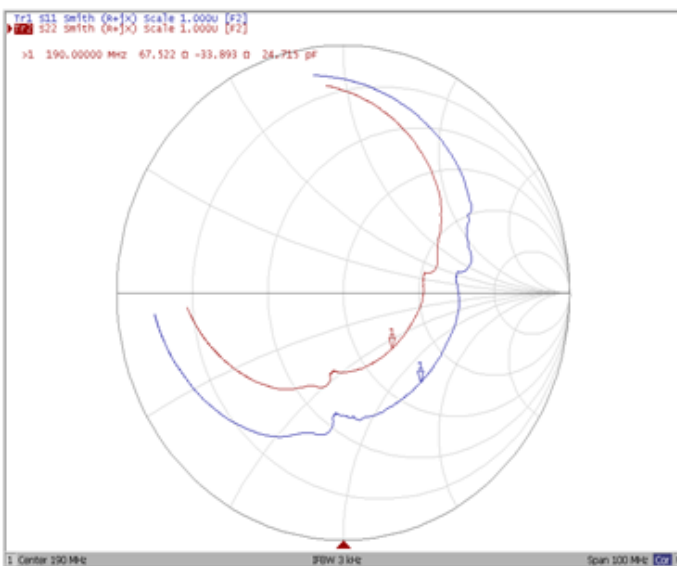
Ripple Variation Fo±12.5MHz



Group Delay Variation Fo±12.5MHz



Smith Chart



VSWR

