

- 184.00 MHz IF SAW Filter / 10.75 MHz Bandwidth
- Revision 0: 22. Aug. 2011

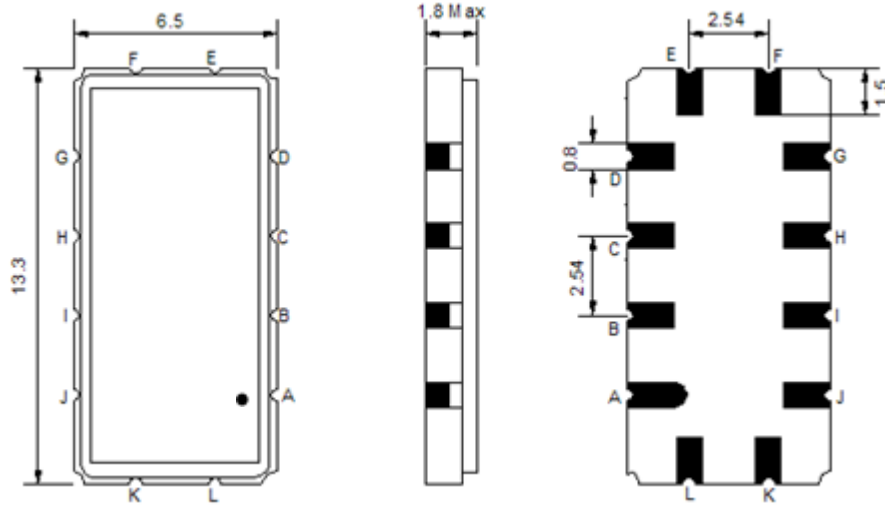
Electrical Characteristics

MAXIMUM RATING				
PARAMETERS DESCRIPTION	UNIT	MINIMUM	TYPICAL	MAXIMUM
Operation Temperature Range	°C	-10	-	75
Storage Temperature Range	°C	-40	-	85
Maximum DC Voltage	V	-	-	10
Maximum Input Power	dBm	-	-	10
Source Impedance (single ended) ⁽¹⁾	Ω	-	50	-
Load Impedance (single ended) ⁽¹⁾	Ω	-	50	-
Package type & size	V			
Length x Width	mm ²	-	13.3 x 6.5	-
Height	mm	-	-	1.8

ELECTRICAL SPECIFICATION				
PARAMETERS DESCRIPTION	UNIT	MINIMUM	TYPICAL	MAXIMUM
Center Frequency (Fo)	MHz	-	184.00	-
Insertion Loss at Fo	dB	-	24.80	27.00
Group Delay Variation at Fo ± 5.00 MHz	nsec	-	42	100
Absolute Delay at Fo	usec	-	2.01	2.20
Passband Ripple Variation at Fo ± 5.00 MHz	dB	-	0.40	1.00
Bandwidth at -1dB	MHz	10.50	10.75	-
Bandwidth at -3dB	MHz	-	11.25	-
Bandwidth at -40dB	MHz	-	13.20	13.40
Ultimate Rejection	dB	48	53	-
Temperature Coefficient	ppm/°C	-	-20	-

Notes : (1) With Matching Network (Ref. Testing Environment Circuit as shown below).
Those impedances could be modified with different impedance values and/or structures, if necessary.

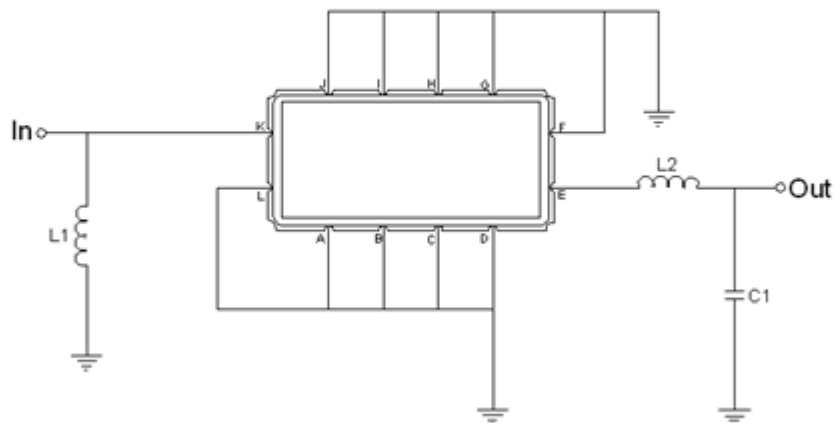
Package Dimensions



- ① **TRANSKO:** Brand
- ② **TA18410B:** Model Name
- ③ **X :** Date Code (Year)
- ④ **Y :** Date Code (Month)
- ⑤ **Z :** Date Code (Date)
- : Index Dot

Pin Description	
A, B, C, D, F, G, H, I, J, L	Ground
K	Input
E	Output

Testing Environment

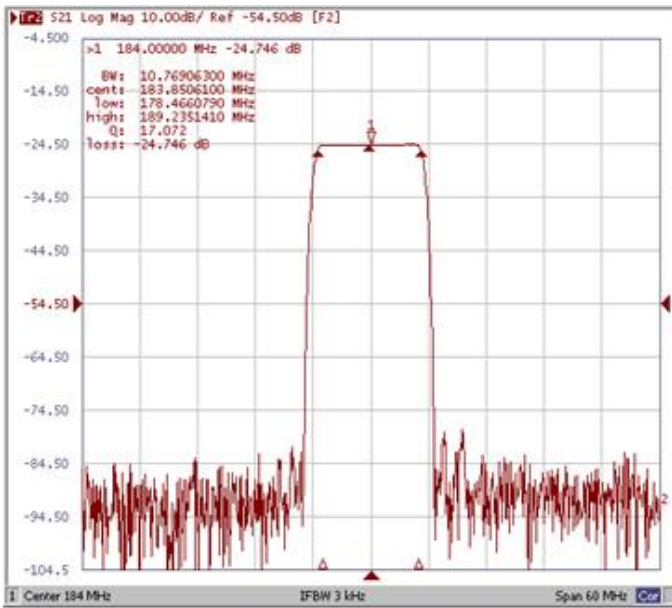


Test Fixture & Values	
Input	L1 = 27 nH
Output	L2 = 39 nH, C1 = 18 pF
Source/Load Impedance	50 Ω

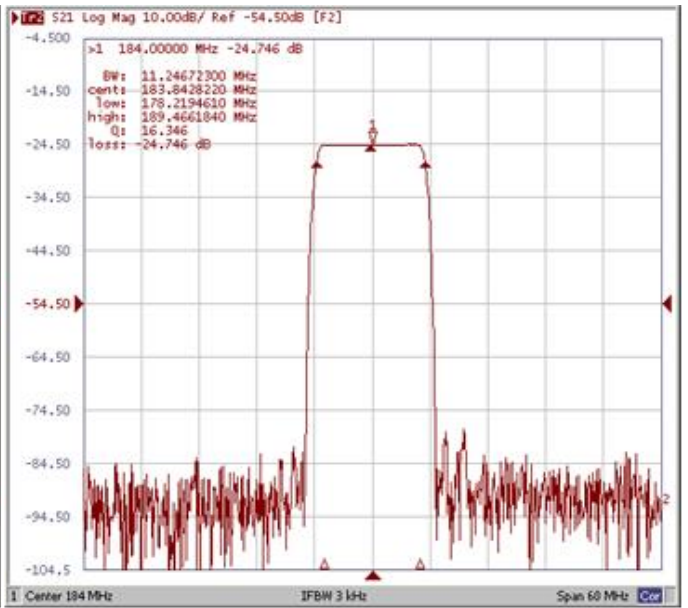
Frequency Characteristics

Frequency Response

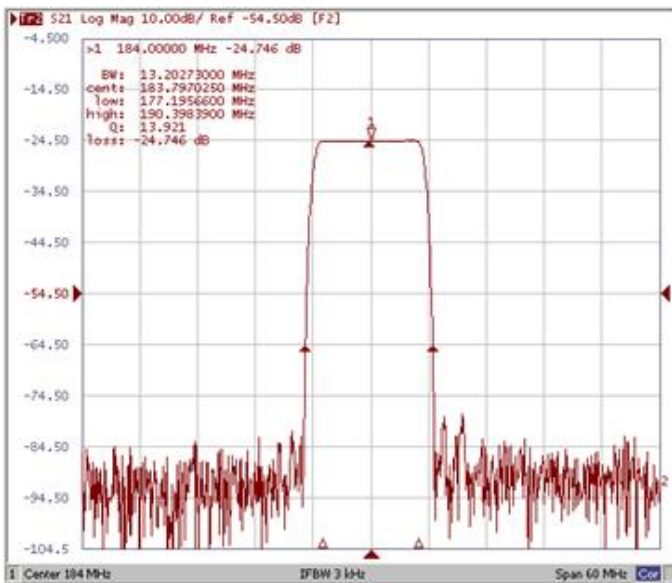
Bandwidth at -1.0 dB



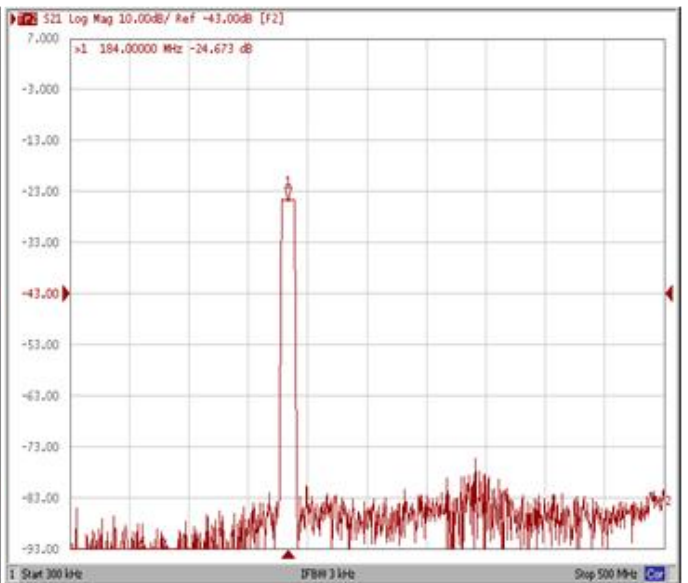
Bandwidth at -3.0 dB



Bandwidth at -40.0 dB



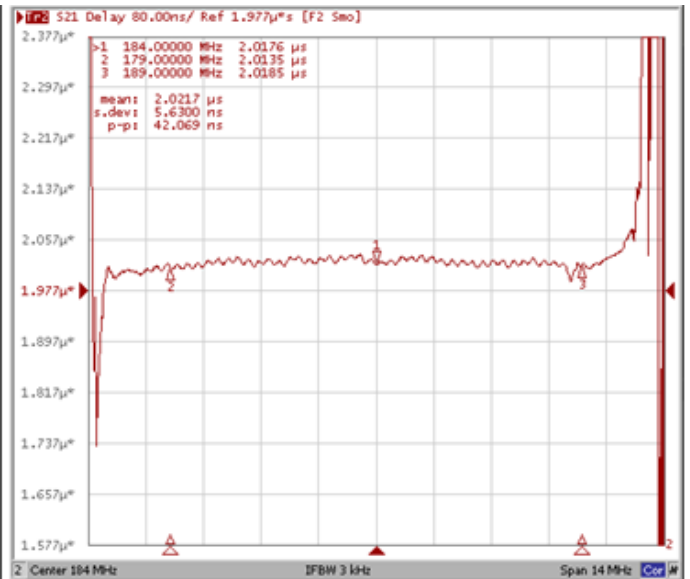
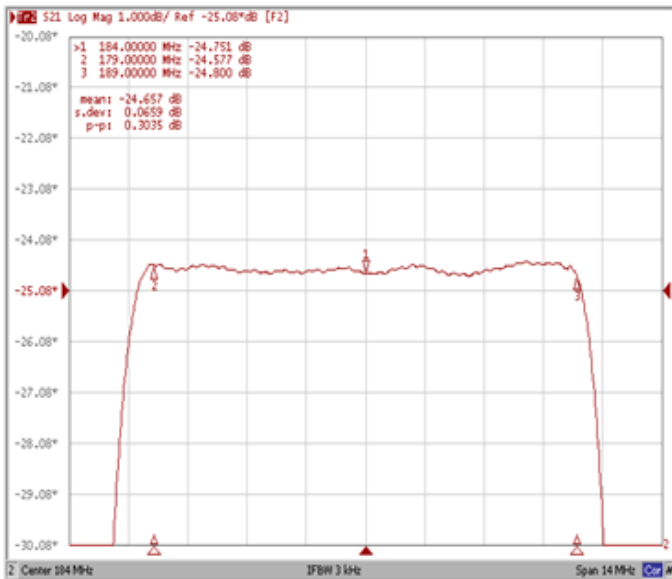
Wide-Band



Frequency Response

Ripple Variation Fo±5.00 MHz

Group Delay Variation Fo±5.00 MHz



Smith Chart

VSWR

