

- 133.5 MHz IF SAW Filter / 26.20 MHz Bandwidth
- Revision 0: 22. Jul. 2008

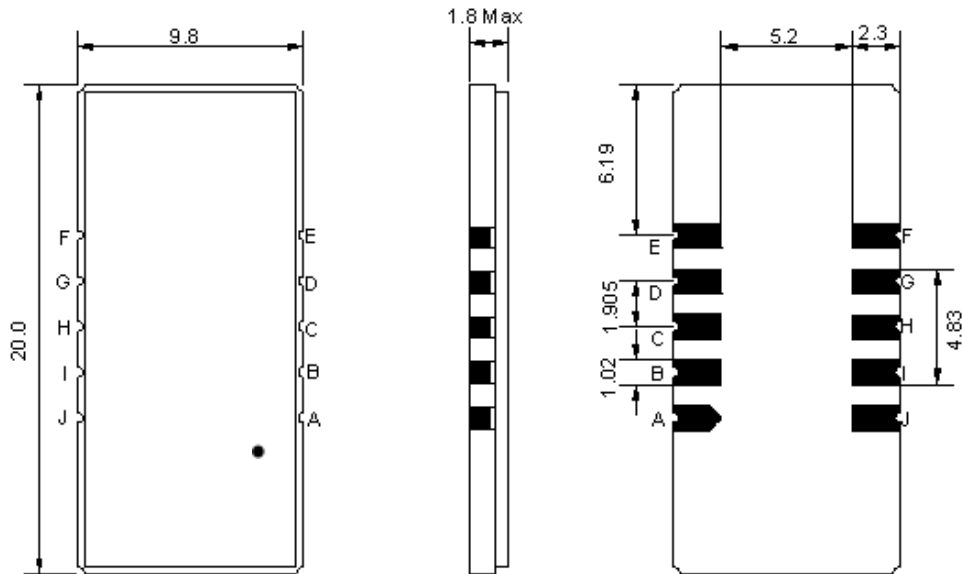
Electrical Characteristics

| MAXIMUM RATING | | | | |
|--|-----------------|---------|------------|---------|
| PARAMETERS DESCRIPTION | UNIT | MINIMUM | TYPICAL | MAXIMUM |
| Operation Temperature Range | °C | 0 | | 70 |
| Storage Temperature Range | °C | -30 | - | 80 |
| Maximum DC Voltage | V | - | - | 10 |
| Maximum Input Power | dBm | - | - | 10 |
| Source Impedance (single ended) ⁽¹⁾ | Ω | - | 50 | - |
| Load Impedance (single ended) ⁽¹⁾ | Ω | - | 50 | - |
| Package type & size | D1 | | | |
| Length x Width | mm ² | - | 20.0 x 9.8 | - |
| Height | mm | - | - | 1.8 |

| ELECTRICAL SPECIFICATION | | | | |
|------------------------------------|--------|---------|---------|---------|
| PARAMETERS DESCRIPTION | UNIT | MINIMUM | TYPICAL | MAXIMUM |
| Center Frequency (Fo) | MHz | - | 133.50 | - |
| Insertion Loss at Fo | dB | - | 23.50 | 25.0 |
| Group Delay Variation (Fo±12.5MHz) | ns | - | 40 | 80 |
| Absolute Delay | us | - | 1.92 | - |
| Passband Ripple (Fo±12.5MHz) | dB | - | 0.75 | 1.2 |
| Bandwidth at -1dB | MHz | 25.00 | 26.20 | - |
| Bandwidth at -10dB | MHz | - | 27.15 | 27.30 |
| Bandwidth at -20dB | MHz | - | 27.60 | 27.80 |
| Bandwidth at -30dB | MHz | - | 27.90 | 28.10 |
| Bandwidth at -45dB | MHz | - | 28.25 | |
| Ultimate Rejection | dB | - | 50 | - |
| Temperature Coefficient | ppm/°C | - | -72 | - |

Notes : (1) With Matching Network (Ref. Testing Environment Circuit as shown below).
Those impedances could be modified with different impedance values and/or structures, if necessary.

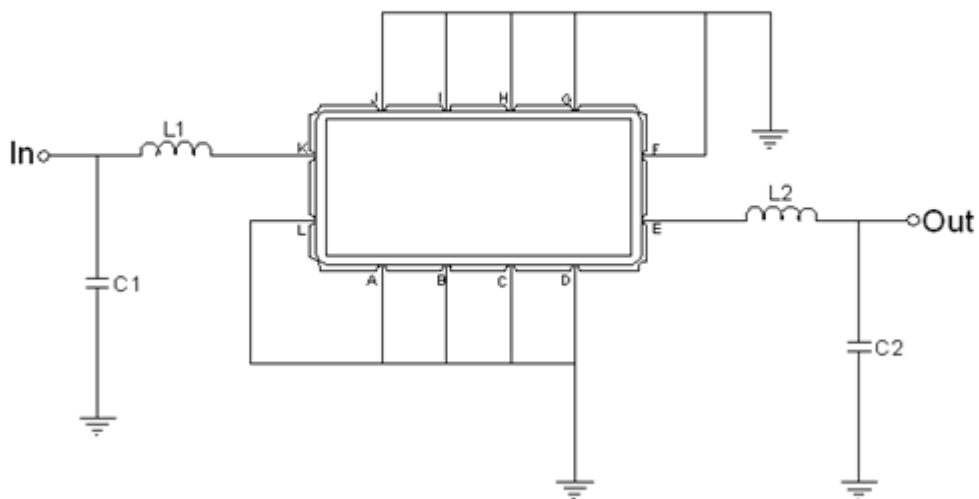
Package Dimensions



- ① **TRANSKO:** Brand
- ② **TA13326B:** Model Name
- ③ **X :** Date Code (Year)
- ④ **Y :** Date Code (Month)
- ⑤ **Z :** Date Code (Date)
- : Index Dot

| Pin Description | |
|-------------------------|--------|
| A, B, C, D, F, G, H, I, | Ground |
| J | Input |
| E | Output |

Testing Environment



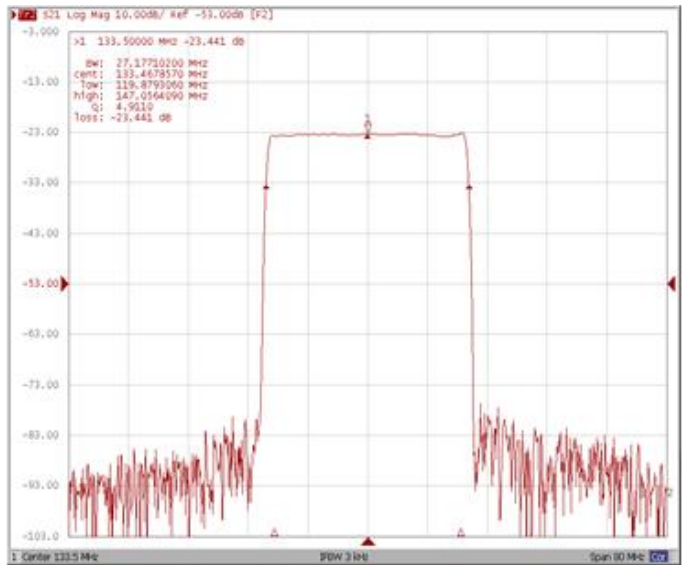
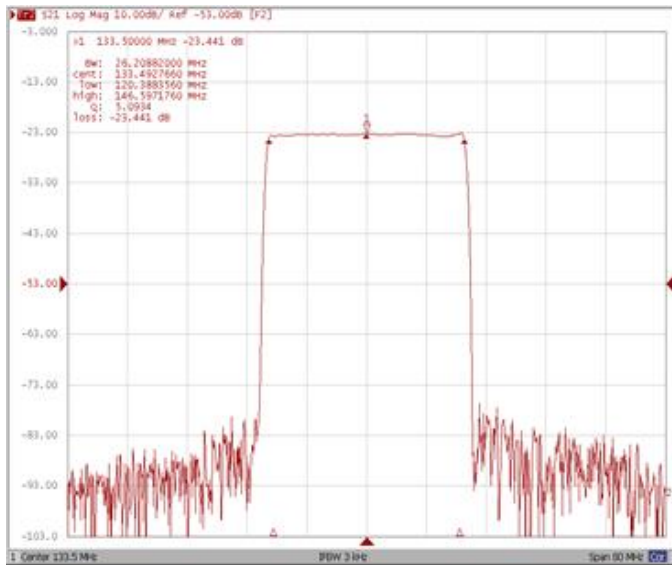
| Test Fixture & Values | |
|------------------------------|--------------------|
| Input | L1=68 nH, C1=10 pF |
| Output | L2=82 nH, C2=22 pF |
| Source/Load Impedance | 50 Ω |

Frequency Characteristics

Frequency Response

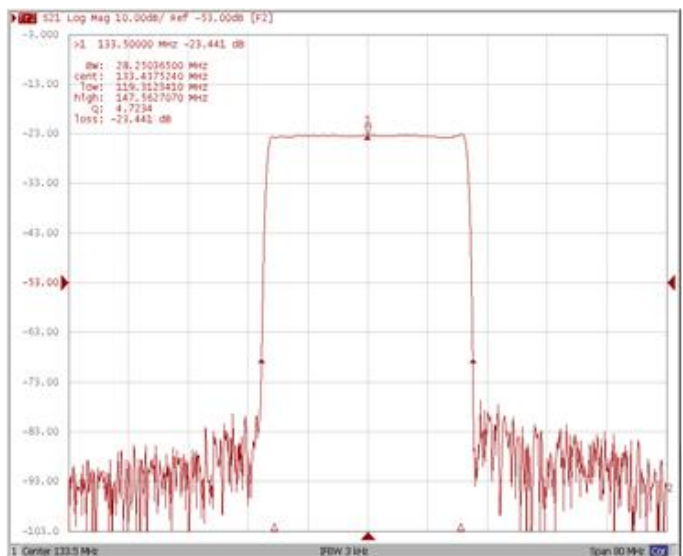
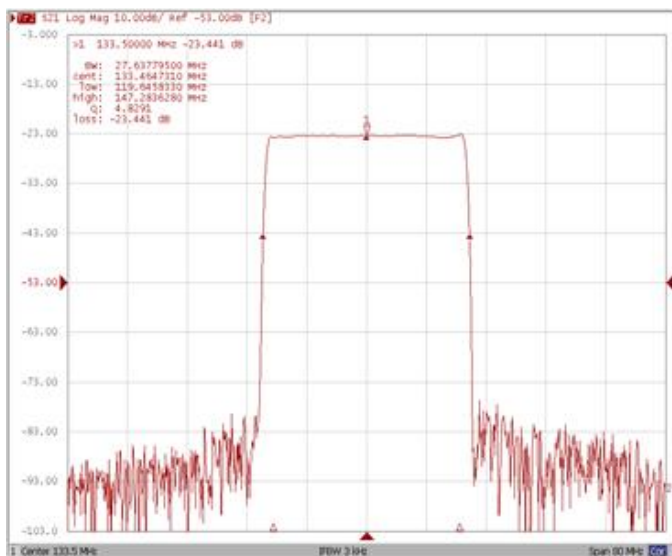
Bandwidth at -1.0 dB

Bandwidth at -10.0 dB



Bandwidth at -20.0 dB

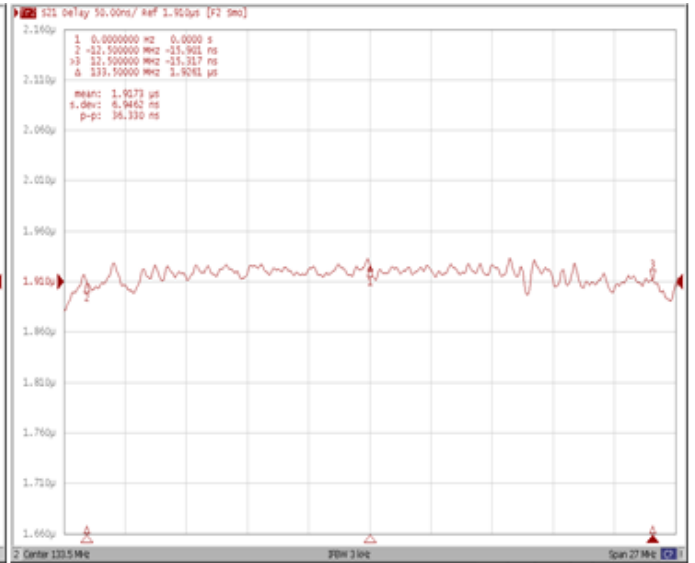
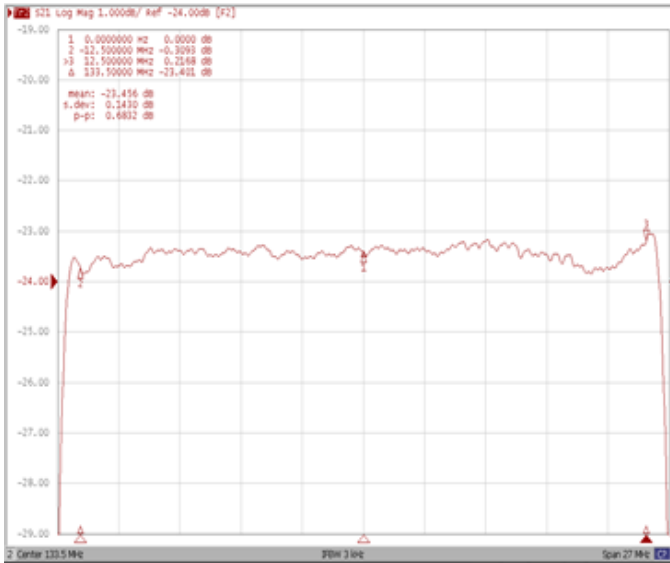
Bandwidth at -45.0 dB



Frequency Response

Ripple Variation Fo±12.5MHz

Group Delay Variation Fo±12.5MHz



Smith Chart

VSWR

