

- 133.5 MHz IF SAW Filter / 26.2 MHz Bandwidth
- Revision 0: 04. Apr. 2008

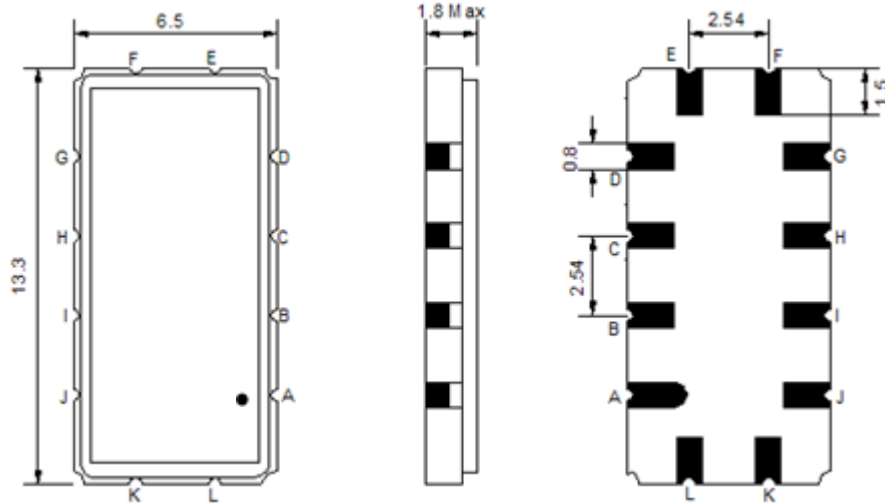
Electrical Characteristics

MAXIMUM RATING				
PARAMETERS DESCRIPTION	UNIT	MINIMUM	TYPICAL	MAXIMUM
Operation Temperature Range	°C	0		70
Storage Temperature Range	°C	-30	-	80
Maximum DC Voltage	V	-	-	10
Maximum Input Power	dBm	-	-	10
Source Impedance (single ended) ⁽¹⁾	Ω	-	50	-
Load Impedance (single ended) ⁽¹⁾	Ω	-	50	-
Package type & size	V			
Length x Width	mm ²	-	13.3 x 6.5	-
Height	mm	-	-	1.8

ELECTRICAL SPECIFICATION				
PARAMETERS DESCRIPTION	UNIT	MINIMUM	TYPICAL	MAXIMUM
Center Frequency (Fo)	MHz	-	133.50	-
Insertion Loss at Fo	dB	-	22.7	25.0
Group Delay Variation (Fo±12.5MHz)	ns	-	40	80
Absolute Delay	us	-	1.42	-
Passband Ripple (Fo±12.5MHz)	dB	-	0.90	1.2
Bandwidth at -1dB	MHz	24.96	26.20	-
Bandwidth at -10dB	MHz	-	27.50	27.90
Bandwidth at -20dB	MHz	-	28.10	28.40
Bandwidth at -30dB	MHz	-	28.45	28.70
Bandwidth at -45dB	MHz	-	28.80	
Ultimate Rejection	dB	45	50	-
Temperature Coefficient	ppm/°C	-	-72	-

Notes : (1) With Matching Network (Ref. Testing Environment Circuit as shown below).
Those impedances could be modified with different impedance values and/or structures, if necessary.

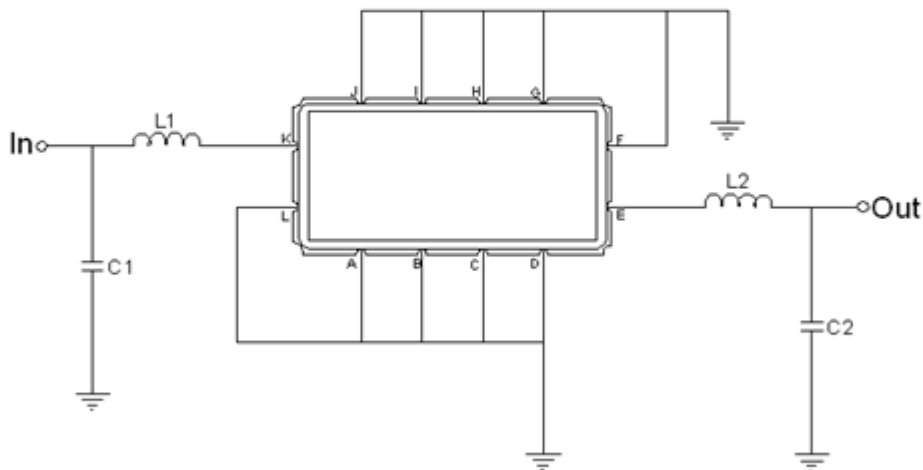
Package Dimensions



- ① **TRANSKO:** Brand
- ② **TA13326A:** Model Name
- ③ **X :** Date Code (Year)
- ④ **Y :** Date Code (Month)
- ⑤ **Z :** Date Code (Date)
- : Index Dot

Pin Description	
A, B, C, D, F, G, H, I, J, L	Ground
K	Input
E	Output

Testing Environment

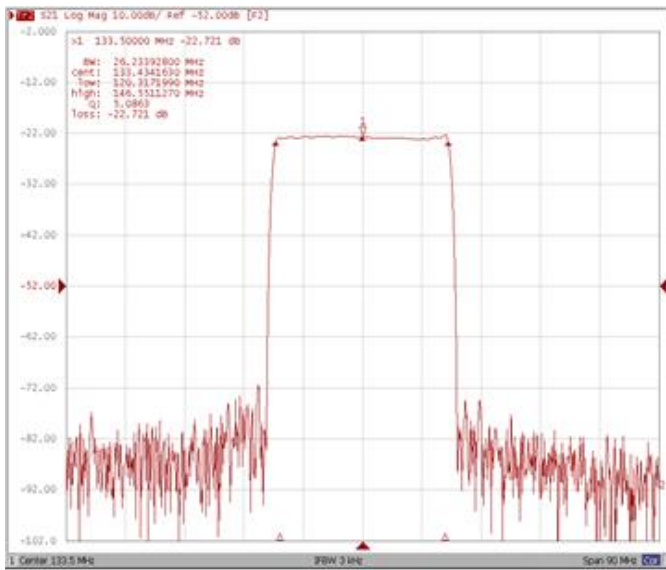


Test Fixture & Values	
Input	L1=39 nH, C1=20 pF
Output	L2=100 nH, C2=24 pF
Source/Load Impedance	50 Ω

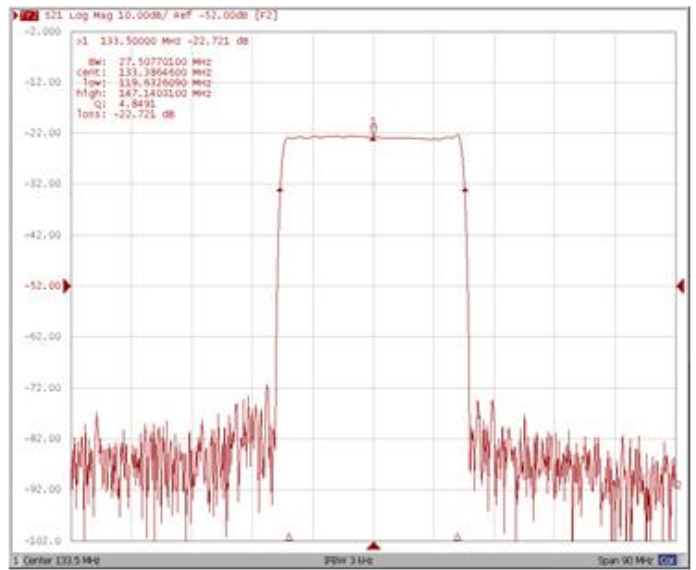
Frequency Characteristics

Frequency Response

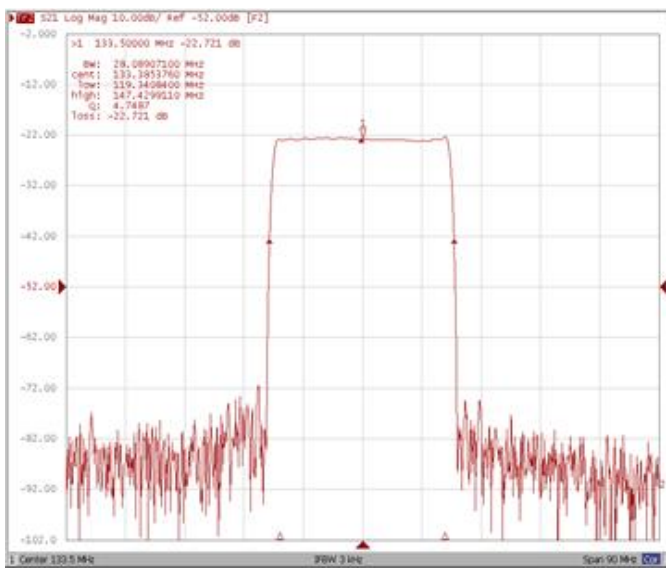
Bandwidth at -1.0 dB



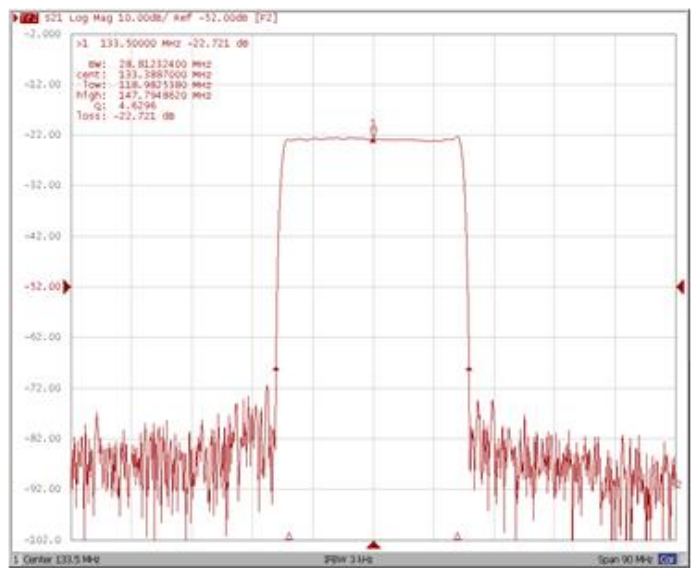
Bandwidth at -10.0 dB



Bandwidth at -20.0 dB

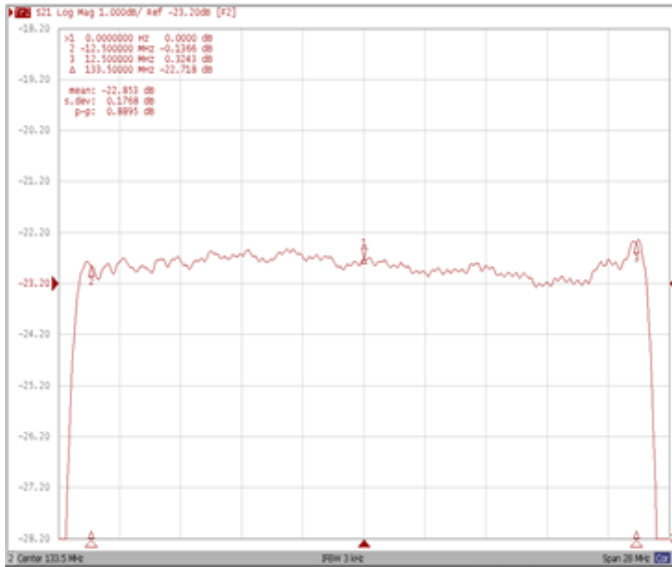


Bandwidth at -45.0 dB

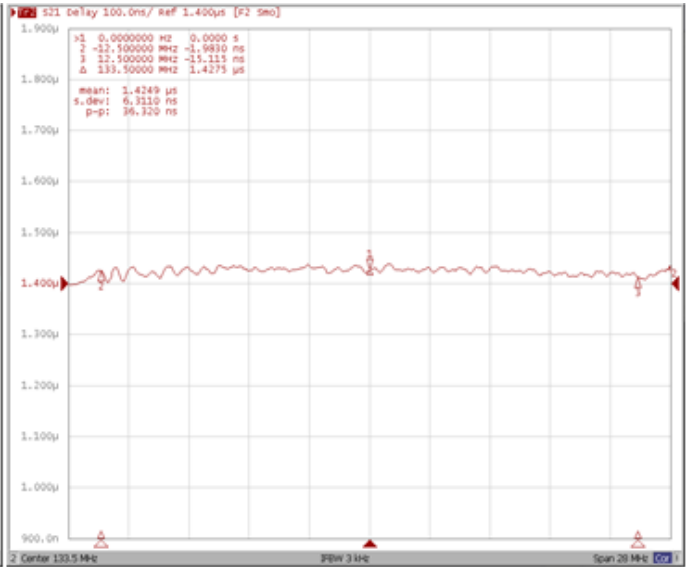


Frequency Response

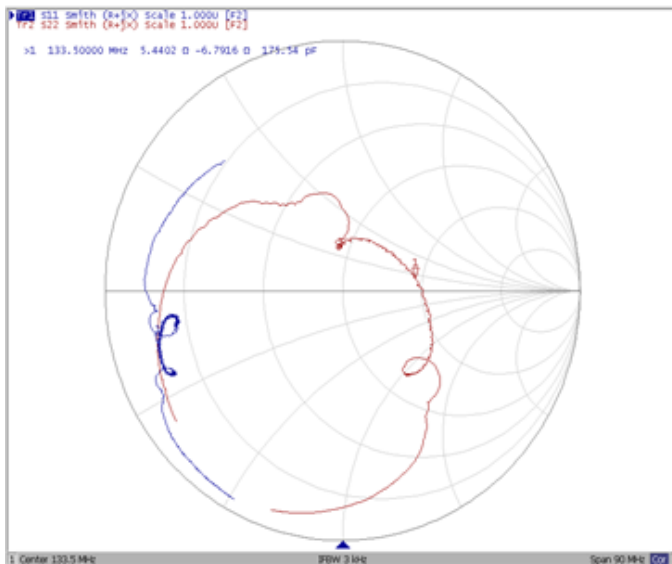
Ripple Variation Fo±12.5MHz



Group Delay Variation Fo±12.5MHz



Smith Chart



VSWR

