

- 120.0 MHz IF SAW Filter / 16.24 MHz Bandwidth
- Revision 0: 19. Jan. 2010

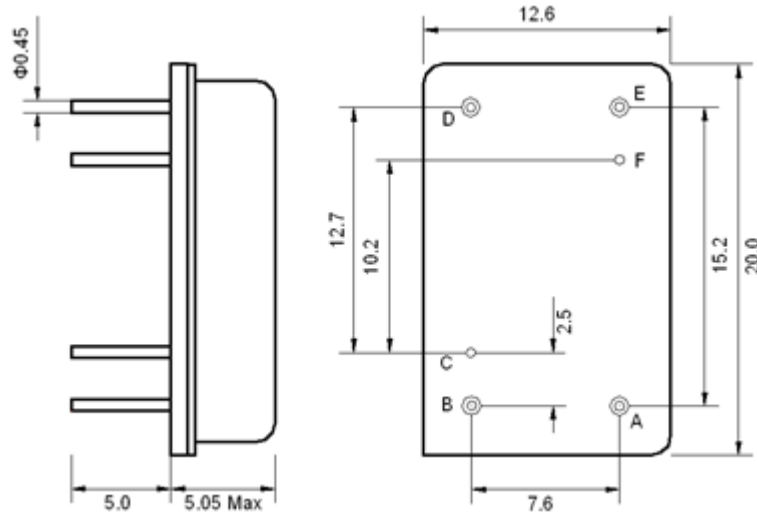
Electrical Characteristics

MAXIMUM RATING				
PARAMETERS DESCRIPTION	UNIT	MINIMUM	TYPICAL	MAXIMUM
Operation Temperature Range	°C	-5	-	80
Storage Temperature Range	°C	-40	-	85
Maximum DC Voltage	V	-	-	10
Maximum Input Power	dBm	-	-	10
Source Impedance (single ended) ⁽¹⁾	Ω	-	50	-
Load Impedance (single ended) ⁽¹⁾	Ω	-	50	-
Package type & size	D			
Length x Width	mm ²	-	20.0 x 12.6	-
Height	mm	-	-	5.05

ELECTRICAL SPECIFICATION				
PARAMETERS DESCRIPTION	UNIT	MINIMUM	TYPICAL	MAXIMUM
Center Frequency (Fo)	MHz	-	120.0	-
Insertion Loss at Fo	dB	-	22.1	24.0
Group Delay Variation at Fo ± 7.70 MHz	nsec	-	41	80
Absolute Delay at Fo	usec	-	1.71	-
Passband Ripple Variation at Fo ± 7.70 MHz	dB	-	0.50	1.00
Bandwidth at -1dB	MHz	-	16.24	-
Bandwidth at -3dB	MHz	16.40	16.65	-
Bandwidth at -40dB	MHz	-	18.39	18.70
Ultimate Rejection	dB	50	55	-
Temperature Coefficient	ppm/°C	-	-72	-

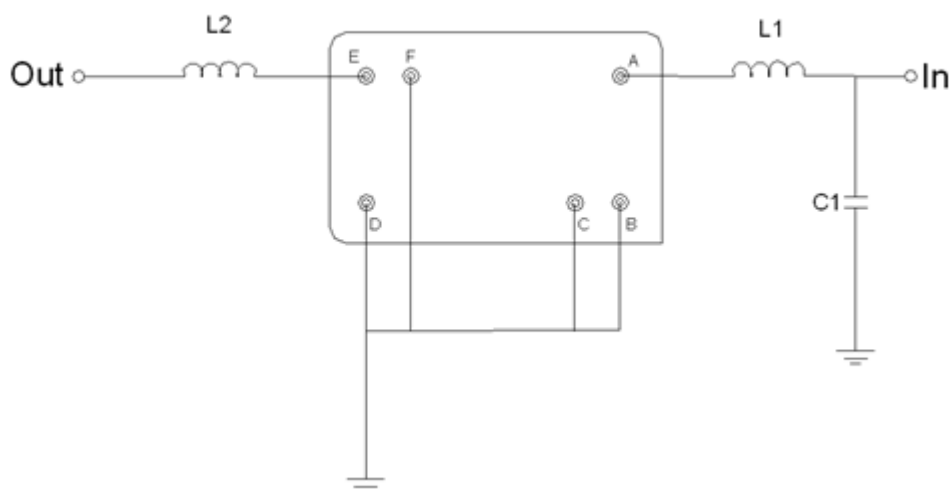
Notes : (1) With Matching Network (Ref. Testing Environment Circuit as shown below).
Those impedances could be modified with different impedance values and/or structures, if necessary.

Package Dimensions



Pin Description	
B, C, D, F	Ground
A	Input
E	Output

Testing Environment

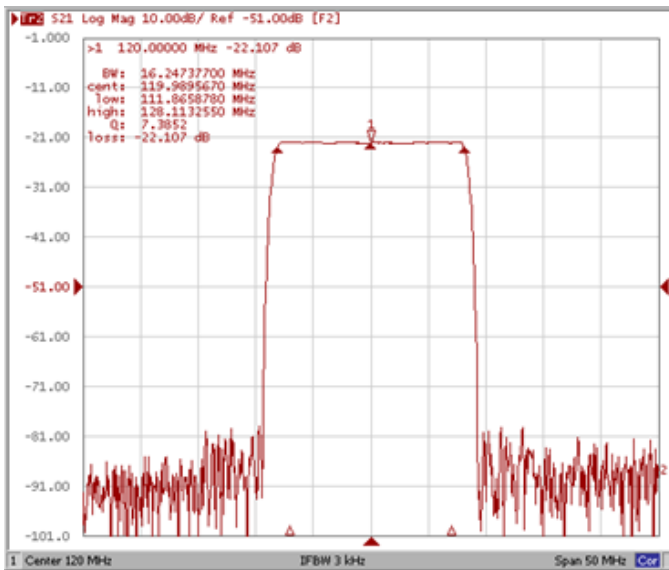


Test Fixture & Values	
Input	L1 = 27 nH, C1 = 30 pF
Output	L2 = 27 nH
Source/Load Impedance	50 Ω

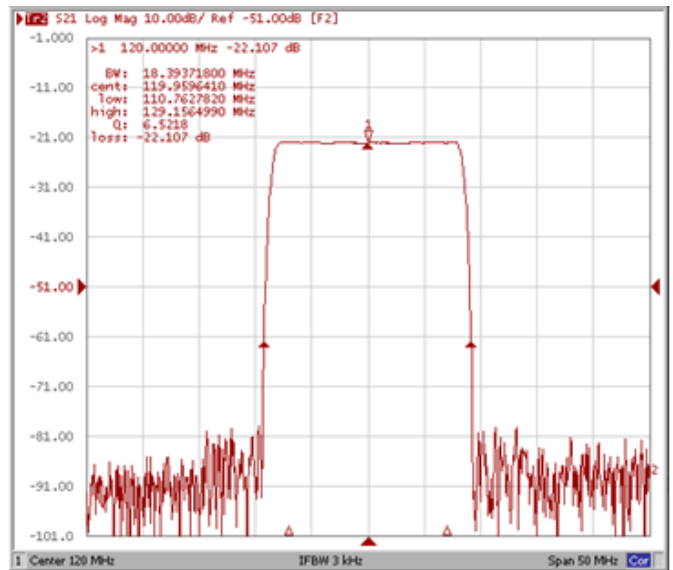
Frequency Characteristics

Frequency Response

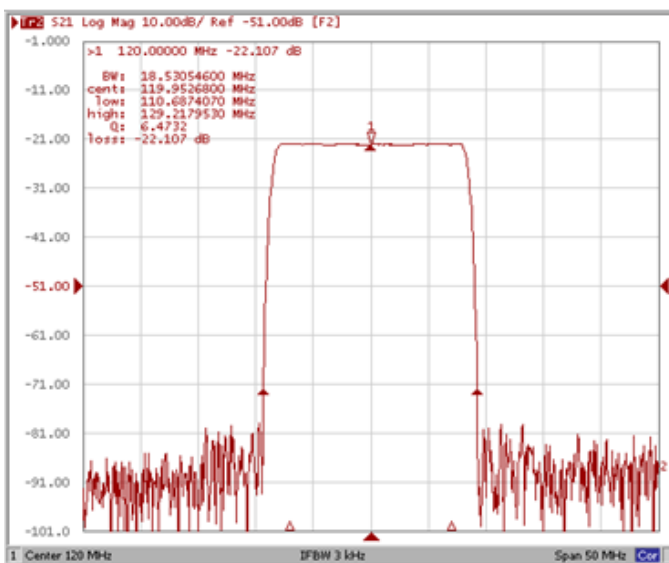
Bandwidth at -1.0 dB



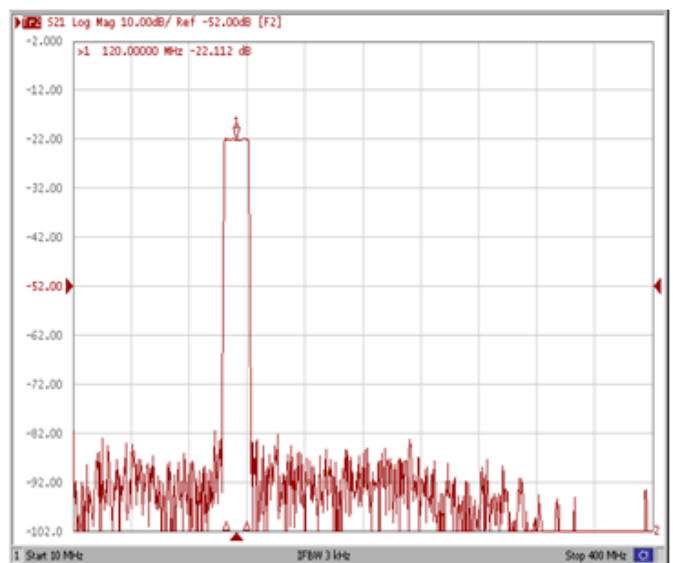
Bandwidth at -40.0 dB



Bandwidth at -50.0 dB

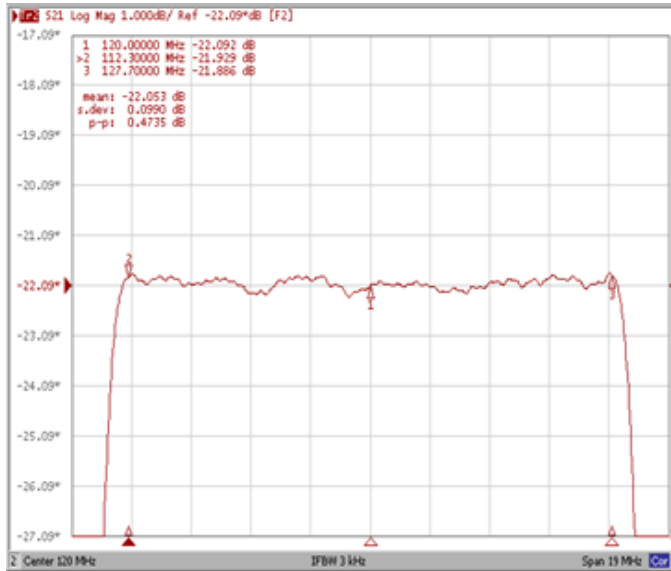


Wide-Band

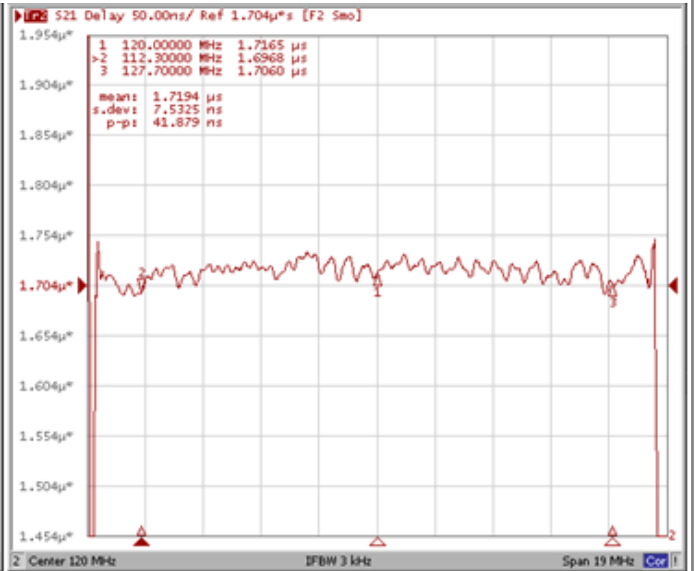


Frequency Response

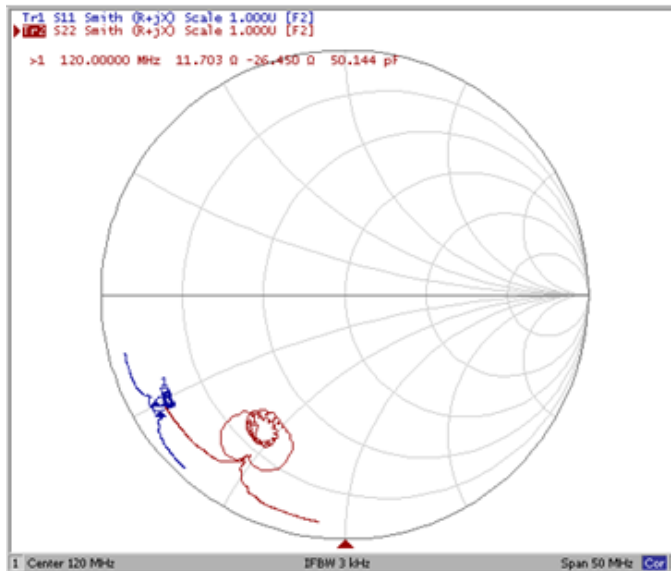
Ripple Variation Fo±7.70MHz



Group Delay Variation Fo±7.70MHz



Smith Chart



VSWR

