

- 115.00 MHz IF SAW Filter / 7.54 MHz Bandwidth
- Revision 0: 16. Oct. 2008

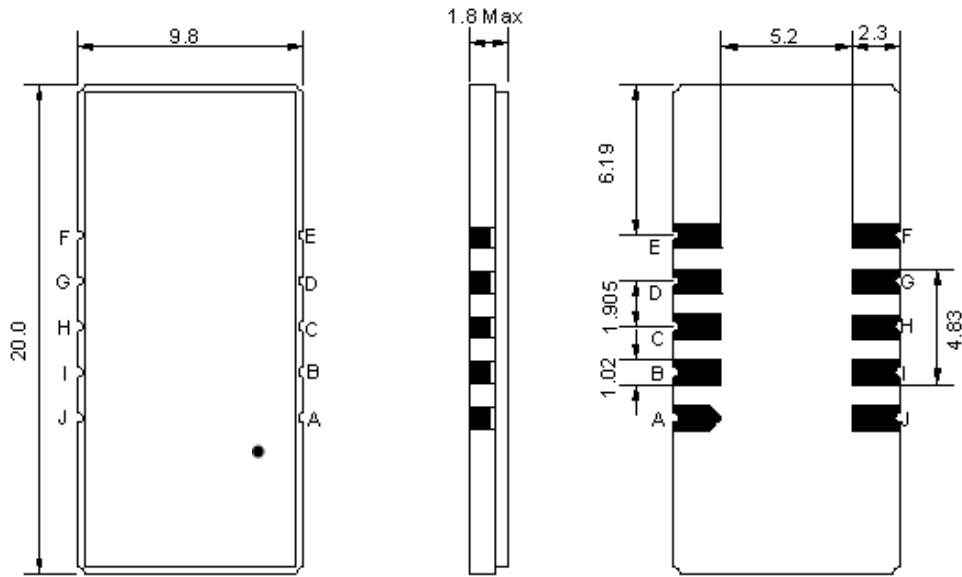
## Electrical Characteristics

MAXIMUM RATING				
PARAMETERS DESCRIPTION	UNIT	MINIMUM	TYPICAL	MAXIMUM
Operation Temperature Range	°C	-	25	-
Storage Temperature Range	°C	-40	-	85
Maximum DC Voltage	V	-	-	10
Maximum Input Power	dBm	-	-	10
Source Impedance (single ended) <sup>(1)</sup>	Ω	-	50	-
Load Impedance (single ended) <sup>(1)</sup>	Ω	-	50	-
Package type & size	D1			
Length x Width	mm <sup>2</sup>	-	20.0 x 9.8	-
Height	mm	-	-	1.8

ELECTRICAL SPECIFICATION				
PARAMETERS DESCRIPTION	UNIT	MINIMUM	TYPICAL	MAXIMUM
Center Frequency (Fo)	MHz	114.90	115.00	115.10
Insertion Loss at Fo	dB	-	24.0	26.0
Group Delay Variation	nsec	-	50.0	100
Absolute Delay at Fo	usec	-	3.02	-
Passband Ripple Variation	dB	-	0.72	1.00
Bandwidth at -1dB	MHz	7.50	7.54	-
Bandwidth at -10dB	MHz	-	8.24	8.32
Bandwidth at -20dB	MHz	-	8.55	-
Bandwidth at -40dB	MHz	-	8.87	-
Ultimate Rejection	dB	45	50	-
Temperature Coefficient	ppm/°C	-	-20	-

**Notes :** (1) With Matching Network (Ref. Testing Environment Circuit as shown below).  
Those impedances could be modified with different impedance values and/or structures, if necessary.

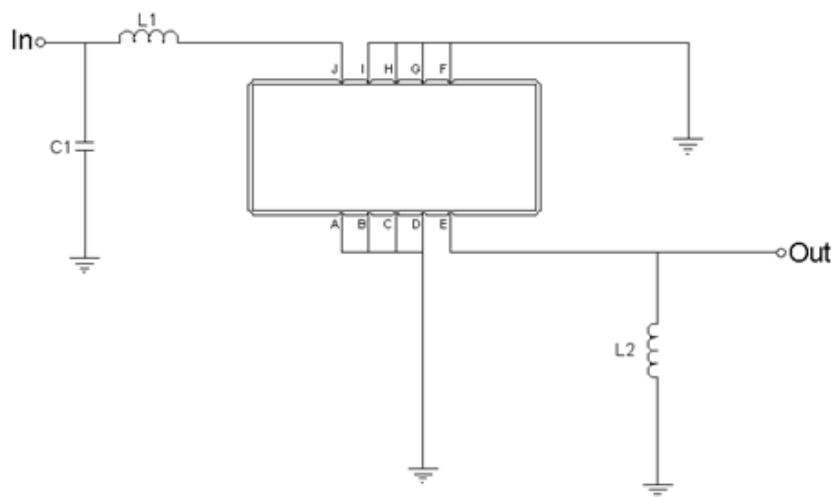
## Package Dimensions



- ① **TRANSKO:** Brand
- ② **TA11507B:** Model Name
- ③ **X :** Date Code (Year)
- ④ **Y :** Date Code (Month)
- ⑤ **Z :** Date Code (Date)
- : Index Dot

Pin Description	
A, B, C, D, F, G, H, I	Ground
J	Input
E	Output

## Testing Environment



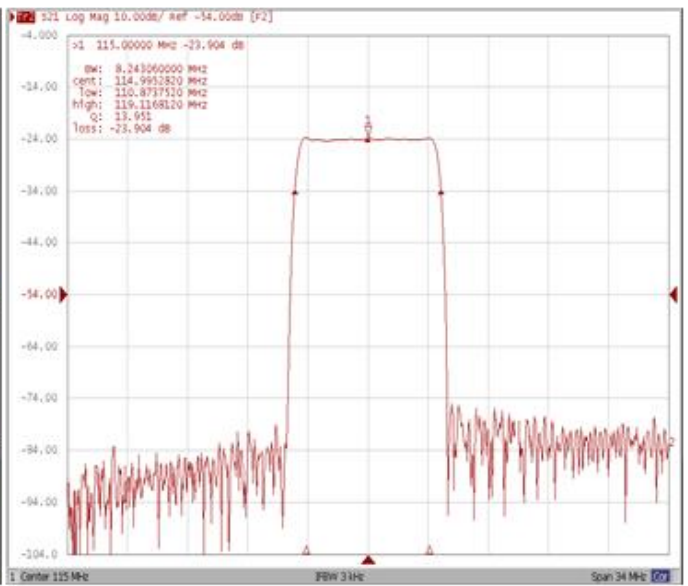
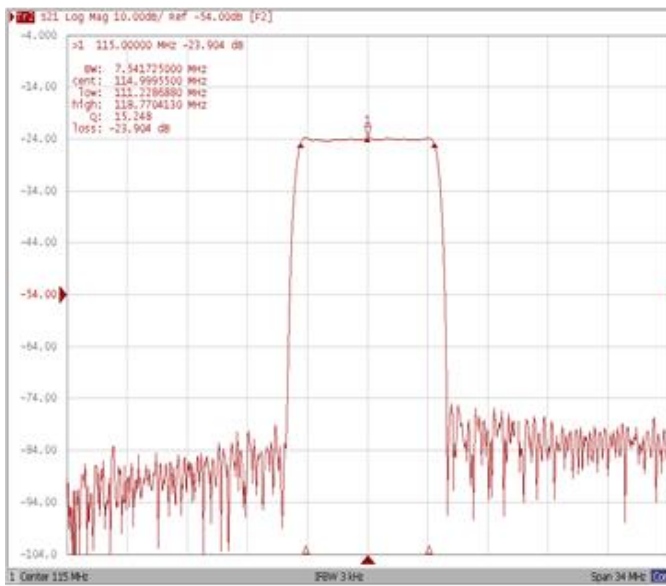
Test Fixture & Values	
Input	L1 = 68 nH, C1 = 51 pF
Output	L2 = 39 nH
Source/Load Impedance	50 Ω

## Frequency Characteristics

### Frequency Response

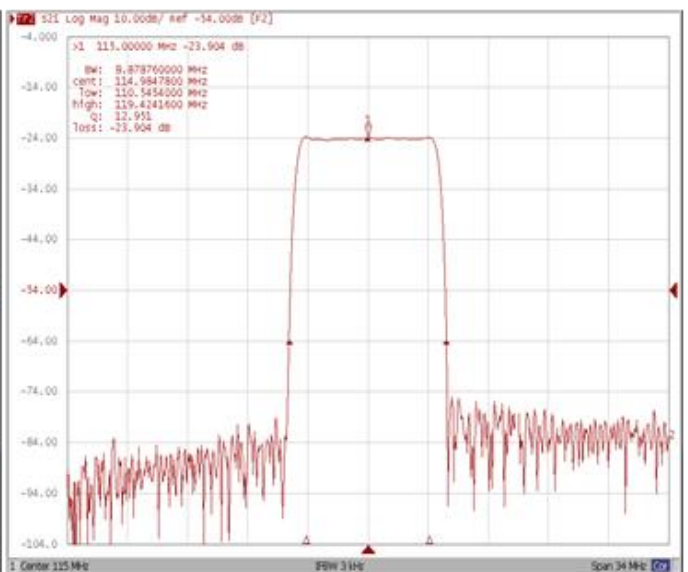
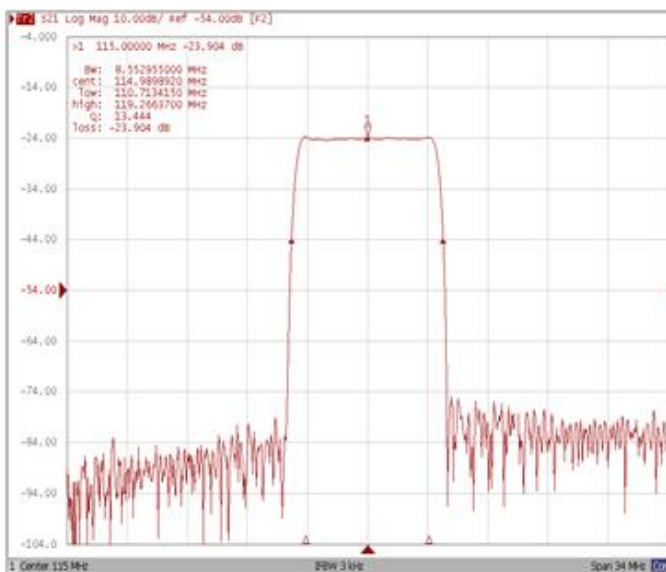
**Bandwidth at -1.0 dB**

**Bandwidth at -10.0 dB**



**Bandwidth at -20.0 dB**

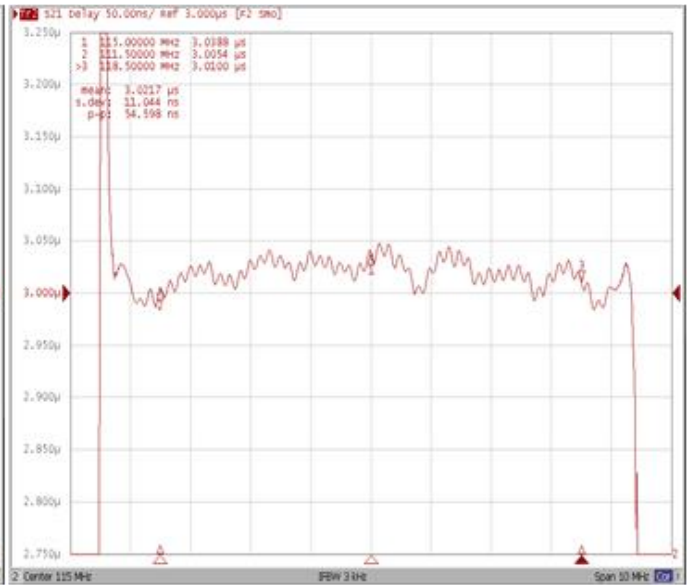
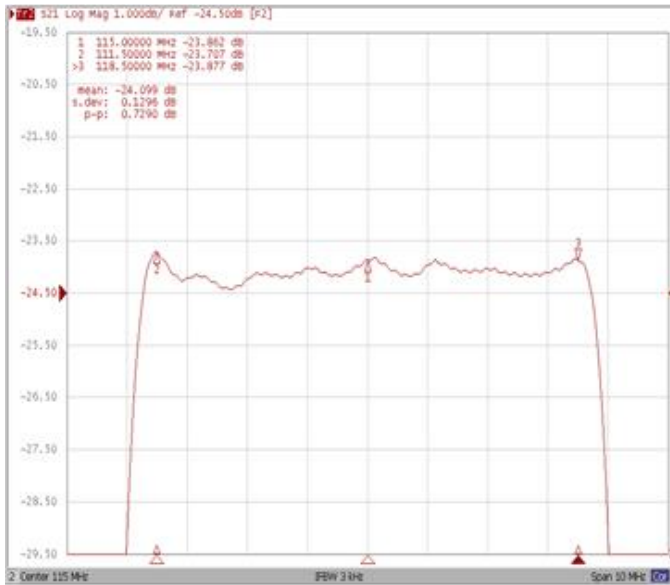
**Bandwidth at -40.0 dB**



**Frequency Response**

**Ripple Variation Fo±3.5MHz**

**Group Delay Variation Fo±3.5MHz**



**Smith Chart**

**SWR**

