

- 93.75 MHz IF SAW Filter / 16.52 MHz Bandwidth
- Revision 0: 04. Nov. 2010

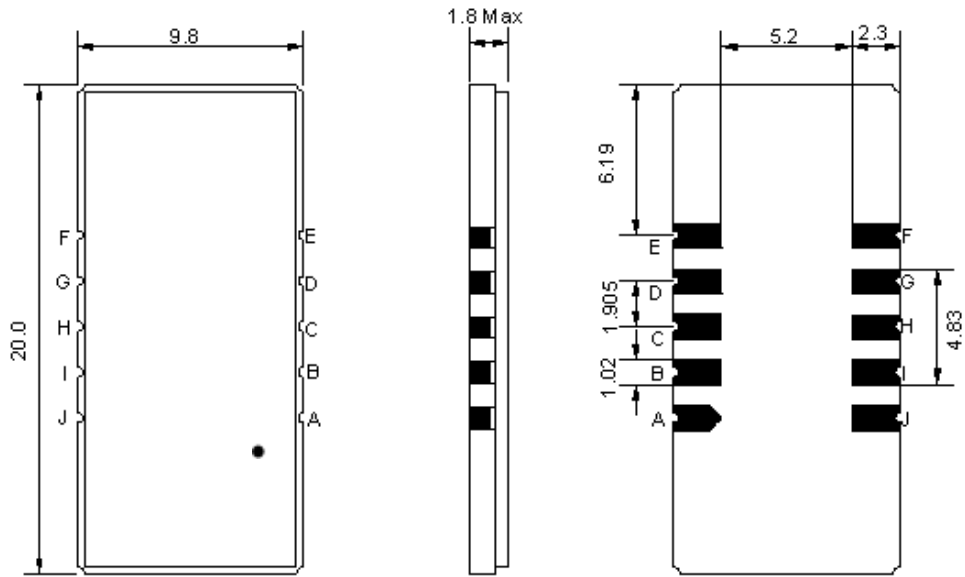
Electrical Characteristics

MAXIMUM RATING				
PARAMETERS DESCRIPTION	UNIT	MINIMUM	TYPICAL	MAXIMUM
Operation Temperature Range	°C	-30	-	+70
Storage Temperature Range	°C	-40	-	+85
Maximum DC Voltage	V	-	-	10
Maximum Input Power	dBm	-	-	10
Source Impedance (single ended) ⁽¹⁾	Ω	-	50	-
Load Impedance (single ended) ⁽¹⁾	Ω	-	50	-
Package type & size	D1			
Length x Width	mm ²	-	20.0 x 9.8	-
Height	mm	-	-	1.8

ELECTRICAL SPECIFICATION				
PARAMETERS DESCRIPTION	UNIT	MINIMUM	TYPICAL	MAXIMUM
Center Frequency (Fo)	MHz	-	93.75	-
Insertion Loss at Fo	dB	-	21.50	23.00
Group Delay Variation at Fo ± 7.48 MHz	nsec	-	38	70
Absolute Delay at Fo	usec	-	2.00	2.10
Passband Ripple Variation at Fo ± 7.48 MHz	dB	-	0.50	1.00
Bandwidth at -1dB	MHz	16.35	16.52	-
Bandwidth at -3dB	MHz	-	16.87	-
Bandwidth at -40dB	MHz	-	18.32	18.45
Ultimate Rejection	dB	50	55	-
Temperature Coefficient	ppm/°C	-	-72	-

Notes : (1) With Matching Network (Ref. Testing Environment Circuit as shown below).
Those impedances could be modified with different impedance values and/or structures, if necessary.

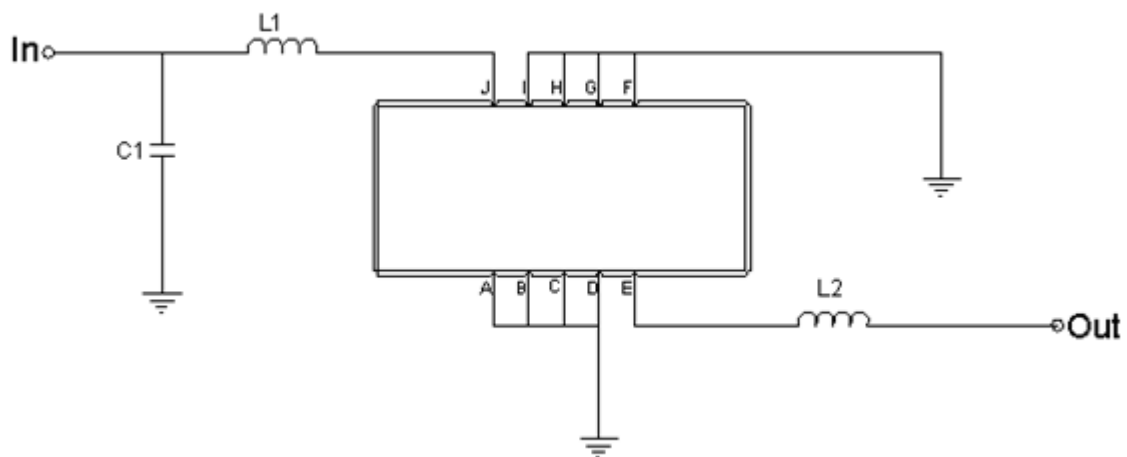
Package Dimensions



- ① **TRANSKO:** Brand
- ② **TA09316B:** Model Name
- ③ **X :** Date Code (Year)
- ④ **Y :** Date Code (Month)
- ⑤ **Z :** Date Code (Date)
- : Index Dot

Pin Description	
A, B, C, D, F, G, H, I	Ground
J	Input
E	Output

Testing Environment



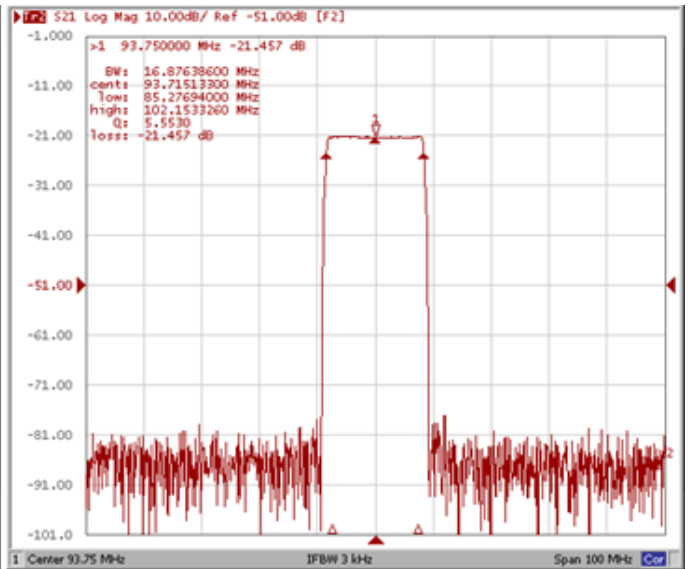
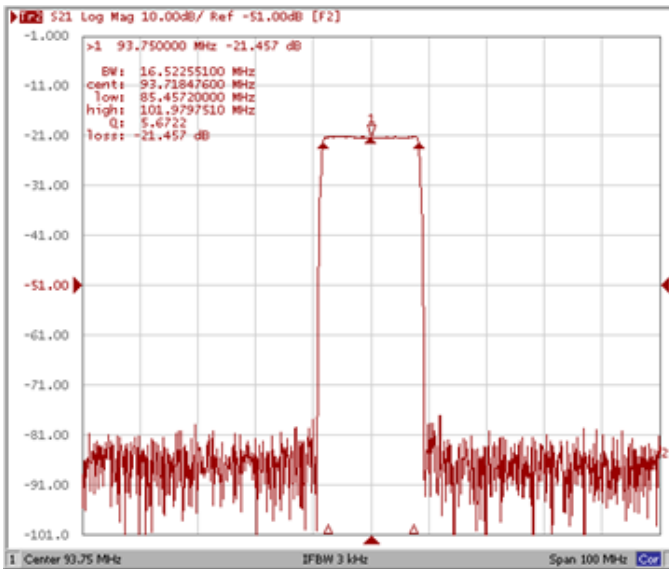
Test Fixture & Values	
Input	L1 =56 nH, C1=36 pF
Output	L2 = 68 nH
Source/Load Impedance	50 Ω

Frequency Characteristics

Frequency Response

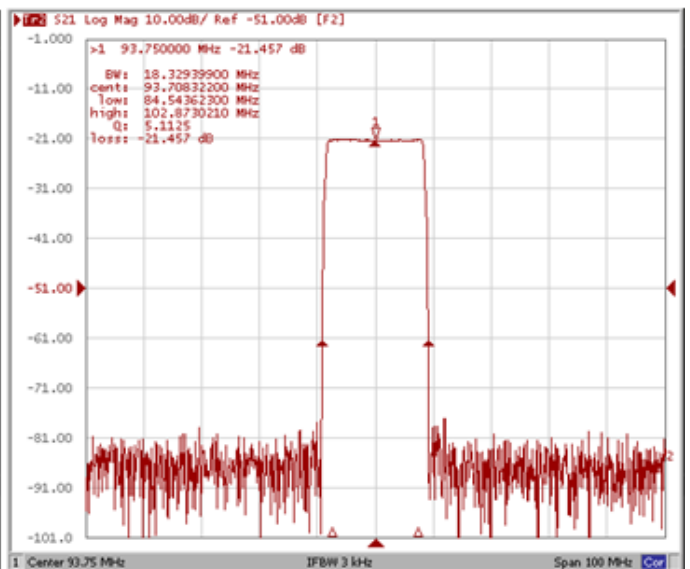
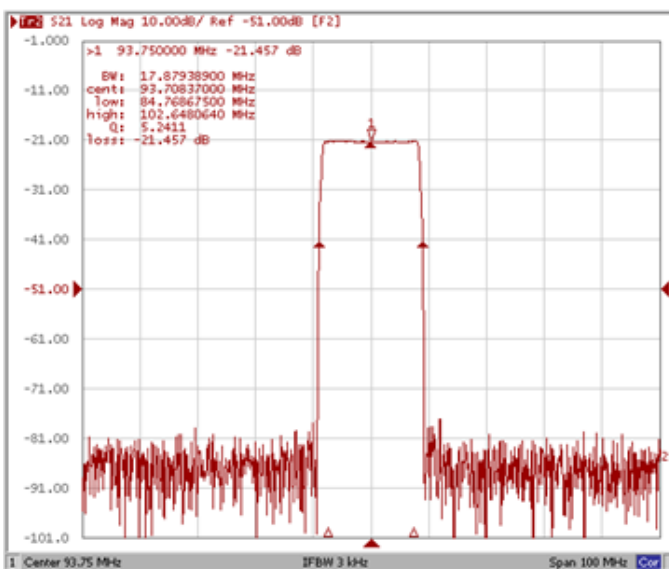
Bandwidth at -1.0 dB

Bandwidth at -3.0 dB



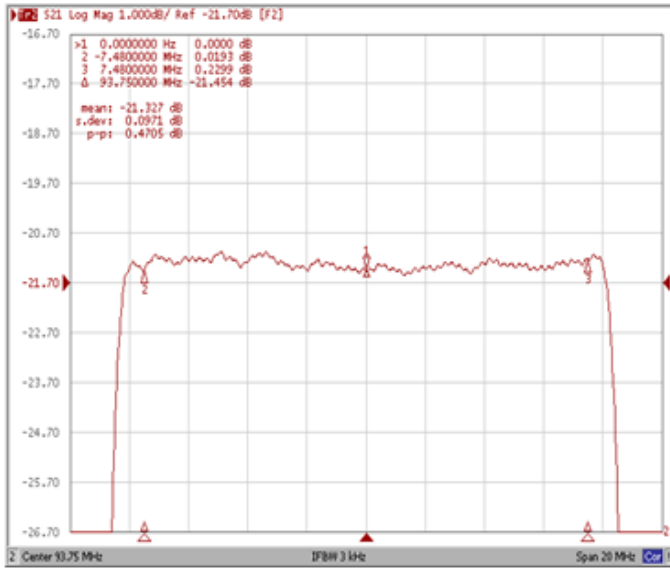
Bandwidth at -20.0 dB

Bandwidth at -40.0 dB

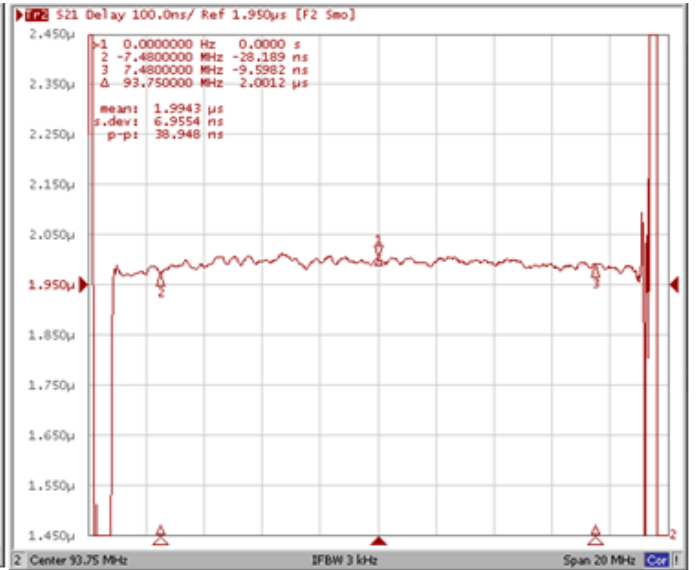


Frequency Response

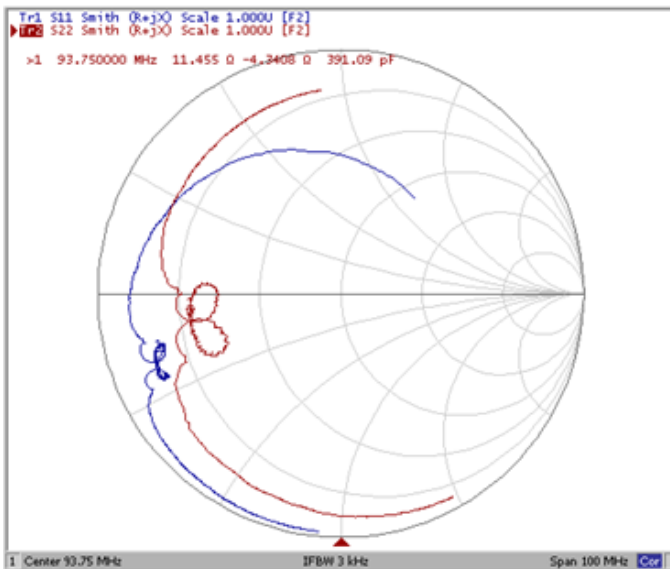
Ripple Variation Fo±7.48MHz



Group Delay Variation Fo±7.48MHz



Smith Chart



VSWR

