

- 85.10MHz IF SAW Filter / 20.10 MHz Bandwidth
- Revision 0: 18. Jul. 2009

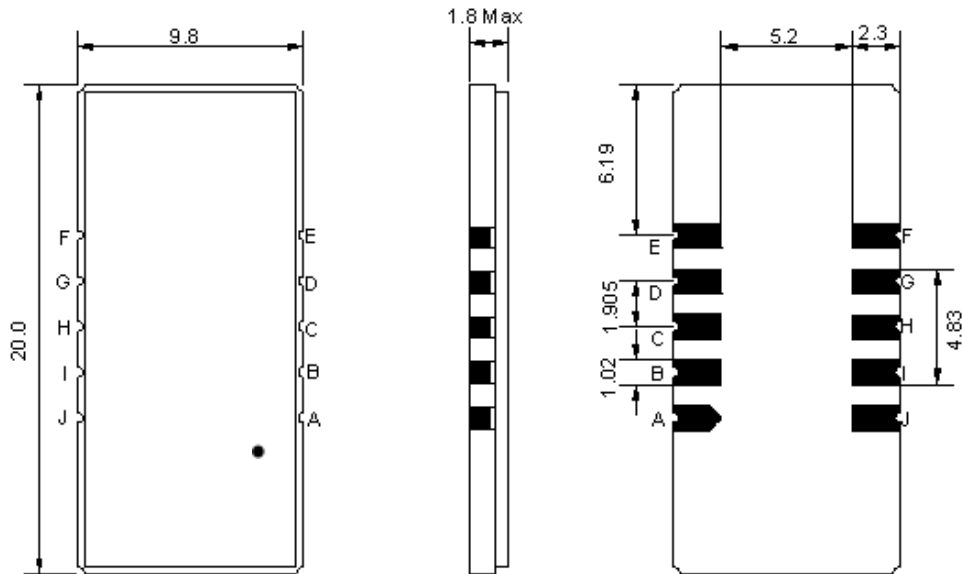
## Electrical Characteristics

MAXIMUM RATING				
PARAMETERS DESCRIPTION	UNIT	MINIMUM	TYPICAL	MAXIMUM
Operation Temperature Range	°C	-30	-	80
Storage Temperature Range	°C	-40	-	85
Maximum DC Voltage	V	-	-	10
Maximum Input Power	dBm	-	-	10
Source Impedance (single ended) <sup>(1)</sup>	Ω	-	50	-
Load Impedance (single ended) <sup>(1)</sup>	Ω	-	50	-
Package type & size	D1			
Length x Width	mm <sup>2</sup>	-	20.0 x 9.8	-
Height	mm	-	-	1.8

ELECTRICAL SPECIFICATION				
PARAMETERS DESCRIPTION	UNIT	MINIMUM	TYPICAL	MAXIMUM
Center Frequency (Fo)	MHz	-	85.10	-
Insertion Loss at Fo	dB	-	23.5	25.5
Group Delay Variation (Fo±9.42MHz)	nsec	-	40	70
Absolute Delay at Fo	usec	-	2.12	-
Passband Ripple Variation (Fo±9.42MHz)	dB	-	0.65	0.95
Bandwidth at -1dB	MHz	19.90	20.10	-
Bandwidth at -10dB	MHz	-	20.95	-
Bandwidth at -20dB	MHz	-	21.35	-
Bandwidth at -40dB	MHz	-	21.80	21.95
Ultimate Rejection	dB	50	53	-
Temperature Coefficient	ppm/°C	-	-72	-

**Notes :** (1) With Matching Network (Ref. Testing Environment Circuit as shown below).  
Those impedances could be modified with different impedance values and/or structures, if necessary.

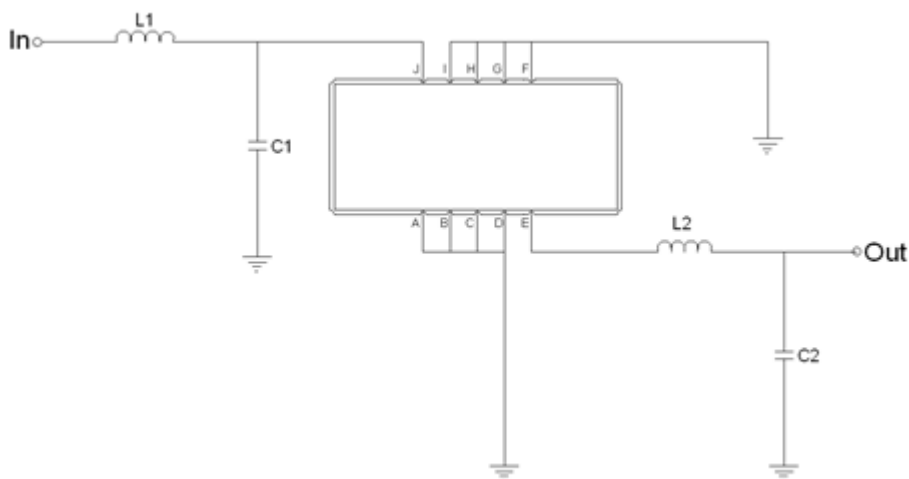
## Package Dimensions



- ① TRANSKO: Brand
- ② TA08520D: Model Name
- ③ X : Date Code (Year)
- ④ Y : Date Code (Month)
- ⑤ Z : Date Code (Date)
- : Index Dot

Pin Description	
A, B, C, D, F, G, H, I	Ground
J	Input
E	Output

## Testing Environment



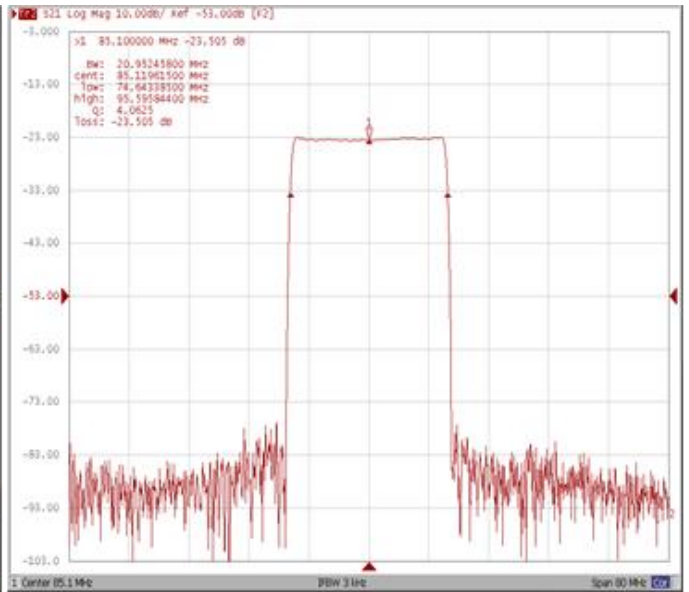
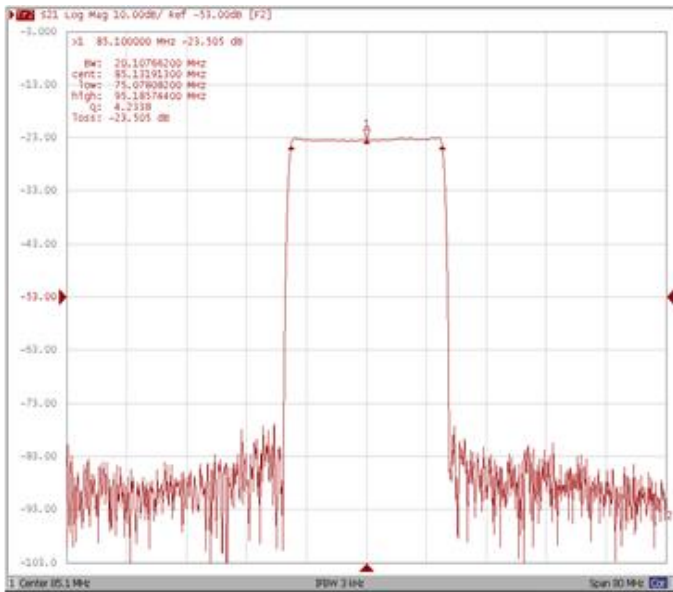
Test Fixture & Values	
Input	L1 = 100 nH, C1 = 4pF
Output	L2 = 120 nH, C2 = 36pF
Source/Load Impedance	50 Ω

## Frequency Characteristics

**Frequency Response**

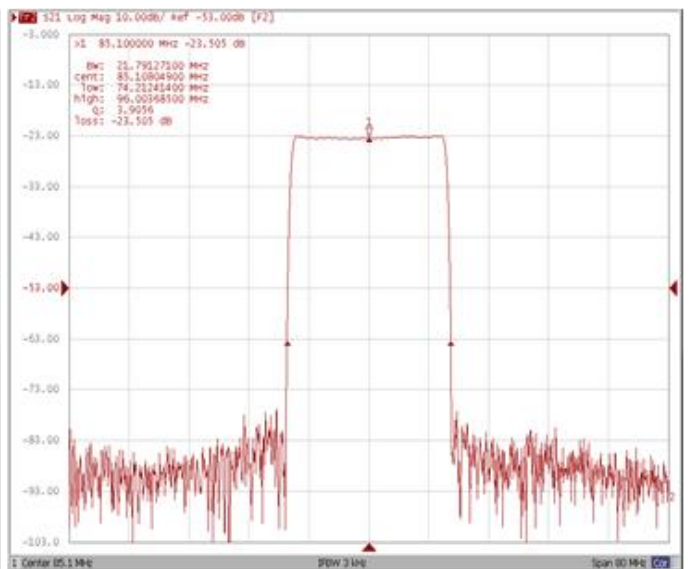
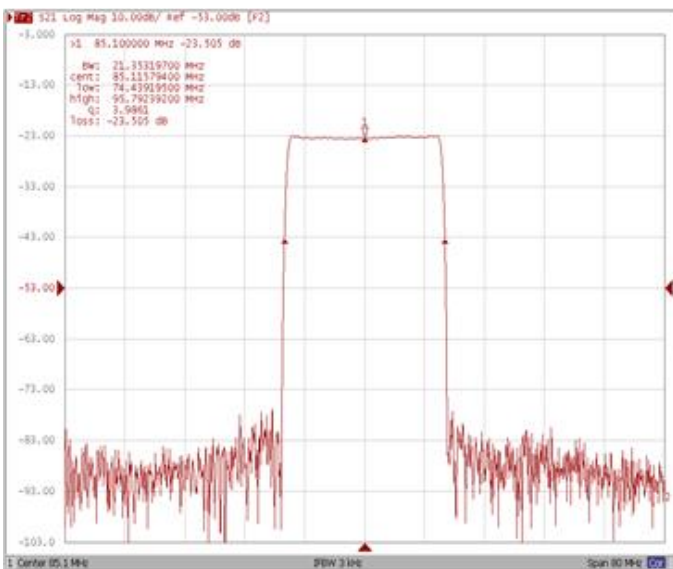
**Bandwidth at -1.0 dB**

**Bandwidth at -10.0 dB**



**Bandwidth at -20.0 dB**

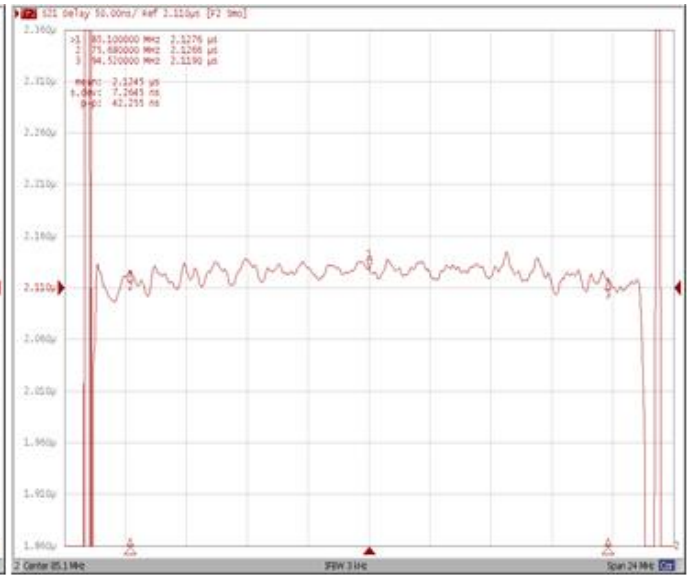
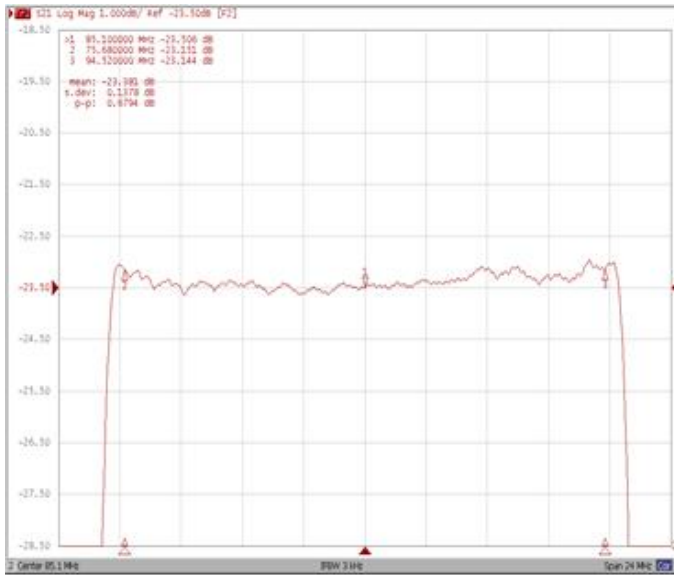
**Bandwidth at -40.0 dB**



**Frequency Response**

**Ripple Variation Fo±9.42MHz**

**Group Delay Variation Fo±9.42MHz**



**Smith Chart**

**VSWR**

