

- 70.0 MHz IF SAW Filter / 26.55 MHz Bandwidth
- Revision 0: 24 Aug. 2009

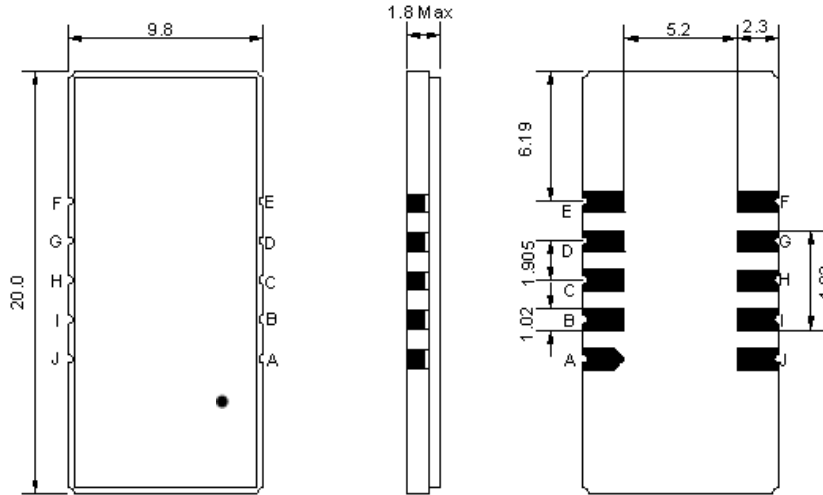
Electrical Characteristics

MAXIMUM RATING				
PARAMETERS DESCRIPTION	UNIT	MINIMUM	TYPICAL	MAXIMUM
Operation Temperature Range	°C	-30	-	80
Storage Temperature Range	°C	-40	-	85
Maximum DC Voltage	V	-	-	10
Maximum Input Power	dBm	-	-	10
Source Impedance (single ended) ⁽¹⁾	Ω	-	50	-
Load Impedance (single ended) ⁽¹⁾	Ω	-	50	-
Package type & size	D1			
Length x Width	mm ²	-	20.0 x 9.8	-
Height	mm	-	-	1.8

ELECTRICAL SPECIFICATION				
PARAMETERS DESCRIPTION	UNIT	MINIMUM	TYPICAL	MAXIMUM
Center Frequency (Fo)	MHz	69.92	70.0	70.08
Insertion Loss at Fo	dB	-	25.5	27.0
Group Delay Variation at Fo ±12.49 MHz	nsec	-	35	90
Absolute Delay at Fo	µsec	-	2.0	-
Amplitude Ripple Variation at Fo ±12.49 MHz	dB _{p-p}	-	0.7	1.0
Bandwidth at -1.0 dB	MHz	-	26.55	-
Bandwidth at -3.0 dB	MHz	26.7	26.92	-
Bandwidth at -40.0 dB	MHz	-	28.42	28.6
Lower Sidelobe	dB	50	52	-
Upper Sidelobe	dB	50	52	-
Temperature Coefficient	ppm/°C	-	-72	-

Notes : (1) With Matching Network (Ref. Testing Environment Circuit as shown below).
Those impedances could be modified with different impedance values and/or structures, if necessary.

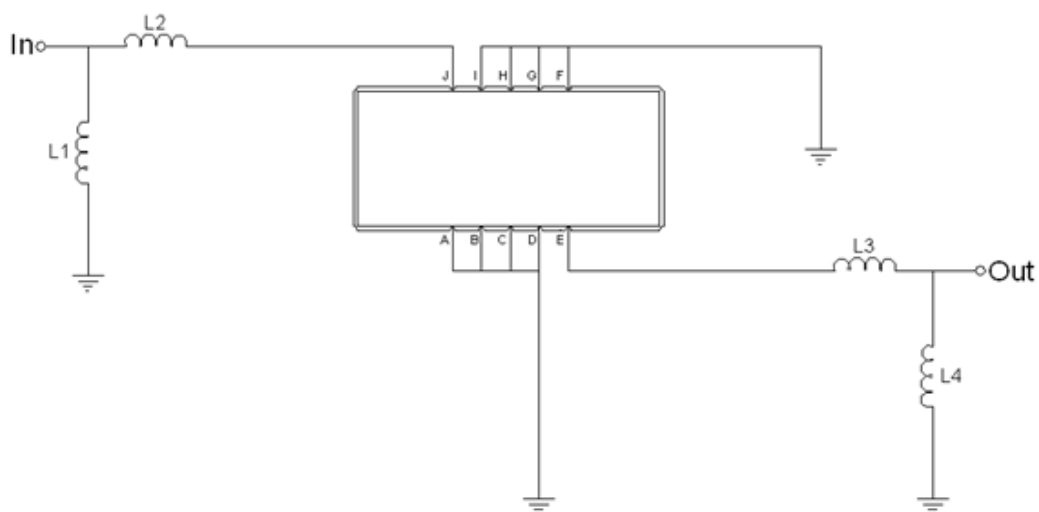
Package Dimensions



- ① **TRANSKO:** Brand
- ② **TA07026C:** Model Name
- ③ **X :** Date Code (Year)
- ④ **Y :** Date Code (Month)
- ⑤ **Z :** Date Code (Date)
- : Index Dot

Pin Description	
A, B, C, D, F, G, H, I	Ground
J	Input
E	Output

Testing Environment

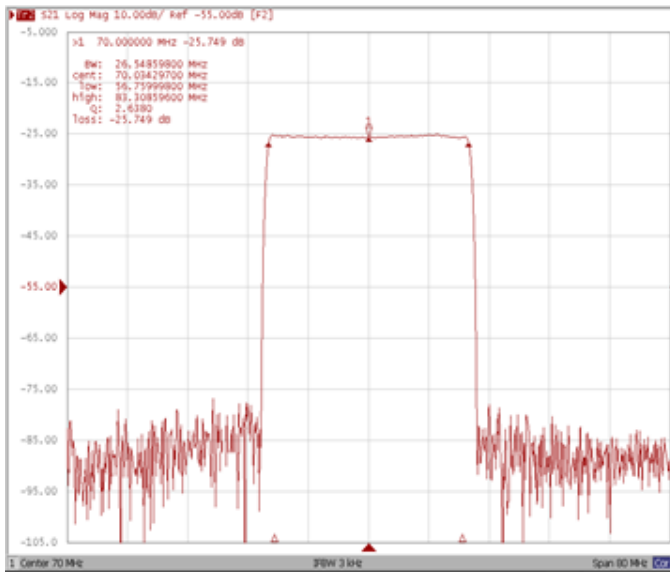


Test Fixture & Values	
Input	L1= 560 nH, L2= 220 nH
Output	L3= 150 nH, L4= 560 nH
Source/Load Impedance	50 Ω

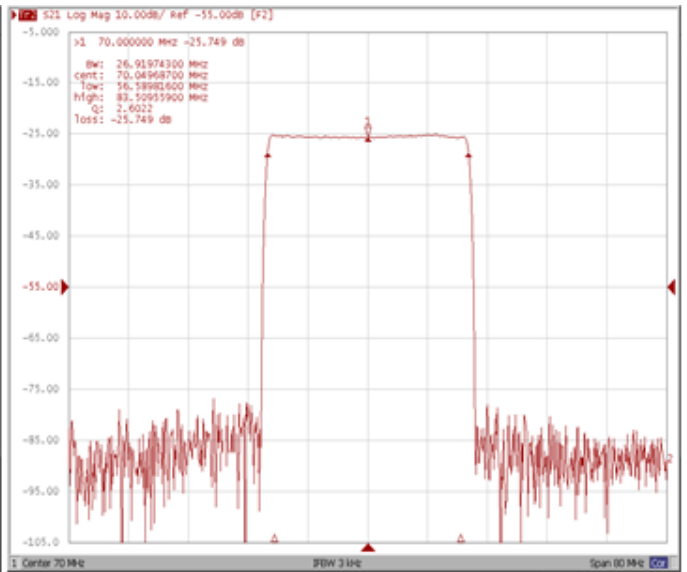
Frequency Characteristics

Frequency Response

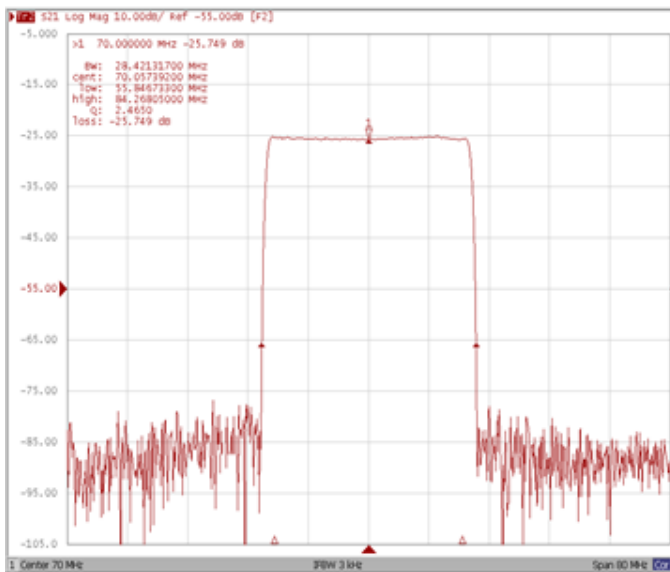
Bandwidth at -1.0 dB



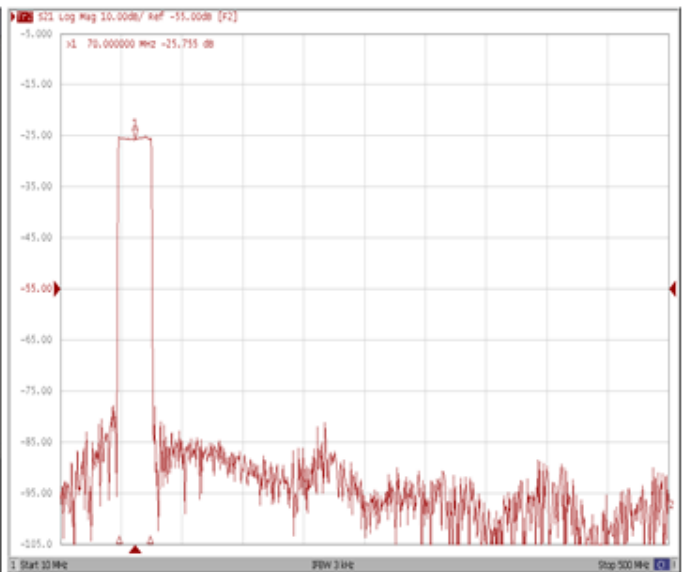
Bandwidth at -3.0 dB



Bandwidth at -40.0 dB

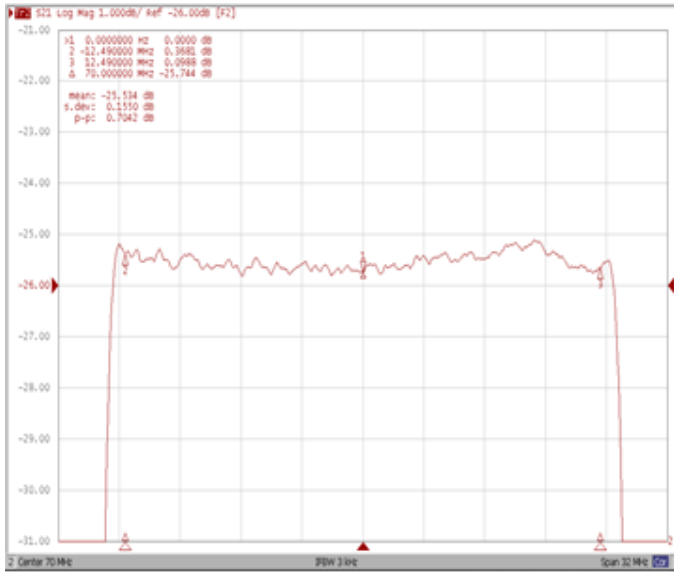


Wide Band

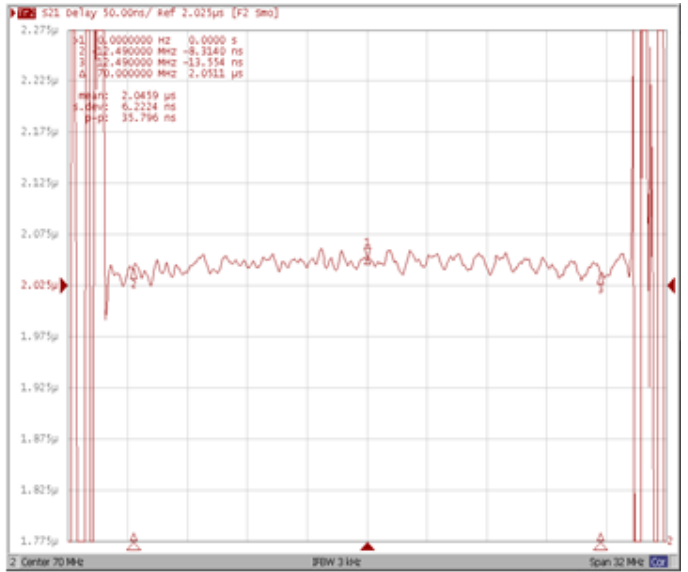


Frequency Response

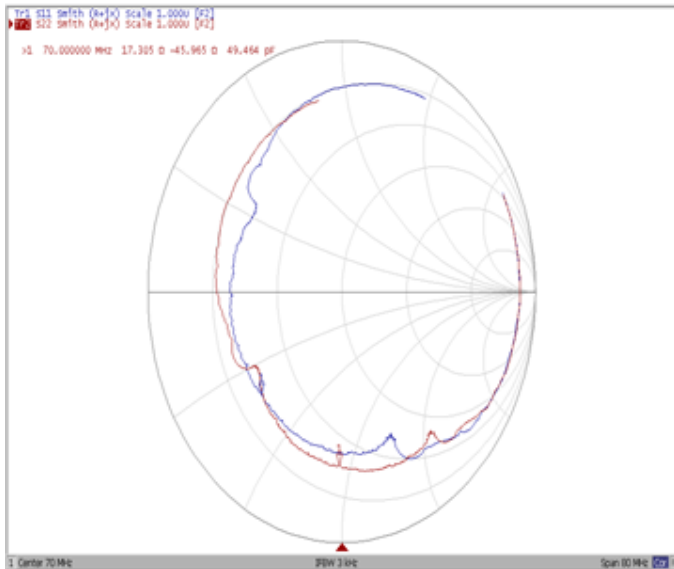
Ripple Variation Fo ±12.49 MHz



Group Delay Variation Fo ±12.49 MHz



Smith Chart



VSWR

