

- 62.5 MHz IF SAW Filter / 19.45 MHz Bandwidth
- Revision 0: 3. Sep. 2008

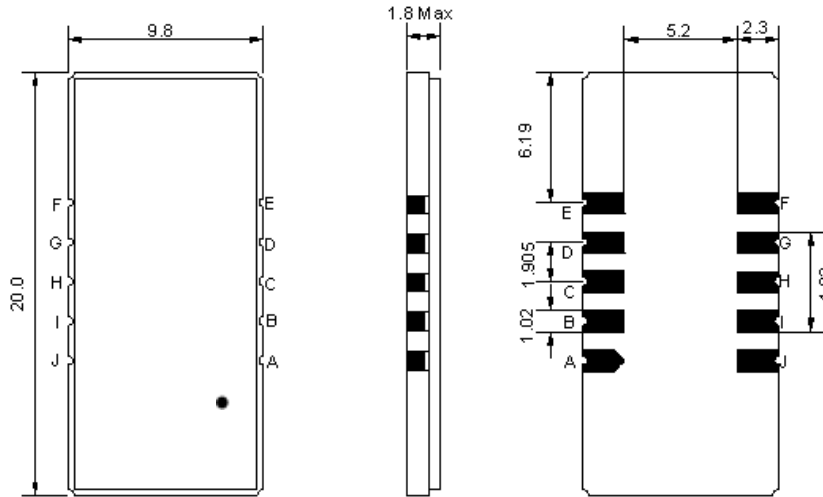
Electrical Characteristics

MAXIMUM RATING				
PARAMETERS DESCRIPTION	UNIT	MINIMUM	TYPICAL	MAXIMUM
Operation Temperature Range	°C	-30	-	80
Storage Temperature Range	°C	-40	-	85
Maximum DC Voltage	V	-	-	10
Maximum Input Power	dBm	-	-	10
Source Impedance (single ended) ⁽¹⁾	Ω	-	50	-
Load Impedance (single ended) ⁽¹⁾	Ω	-	50	-
Package type & size	D1			
Length x Width	mm ²	-	20.0 x 9.8	-
Height	mm	-	-	1.8

ELECTRICAL SPECIFICATION				
PARAMETERS DESCRIPTION	UNIT	MINIMUM	TYPICAL	MAXIMUM
Center Frequency (Fo)	MHz	-	62.5	-
Insertion Loss at Fo	dB	-	21.5	23.0
Group Delay Variation	ns	-	40	55
Absolute Delay at Fo	us	-	1.84	-
Passband Ripple Variation	dB	-	0.50	1.00
Bandwidth at -1dB	MHz	-	19.45	-
Bandwidth at -3dB	MHz	17.9	20.00	-
Bandwidth at -40dB	MHz	-	21.90	22.1
Ultimate Rejection	dB	45	50	-
Temperature coefficient	ppm/°C	-	-72	-

Notes : (1) With Matching Network (Ref. Testing Environment Circuit as shown below).
Those impedances could be modified with different impedance values and/or structures, if necessary.

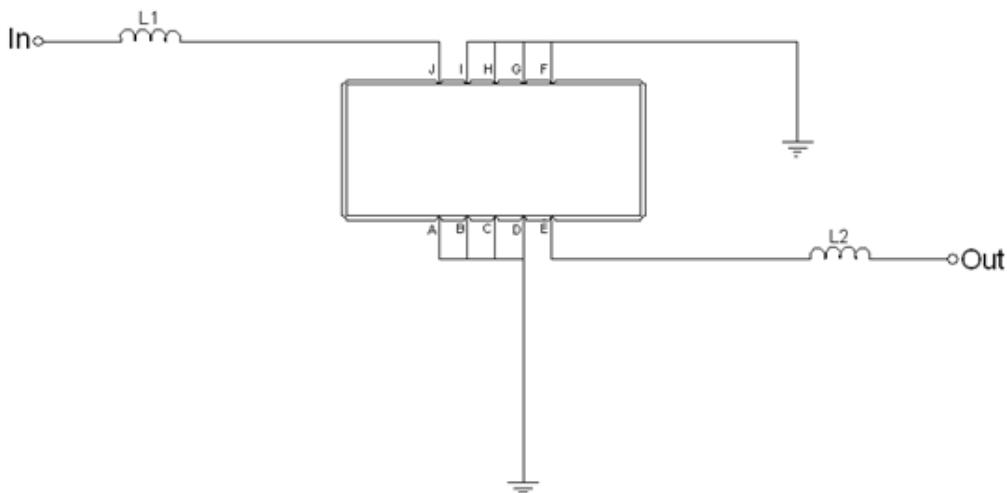
Package Dimensions



- ② **TRANSKO:** Brand
- ② **TA06219E:** Model Name
- ③ **X :** Date Code (Year)
- ④ **Y :** Date Code (Month)
- ⑤ **Z :** Date Code (Date)
- : Index Dot

Pin Description	
A, B, C, D, F, G, H, I	Ground
J	Input
E	Output

Testing Environment

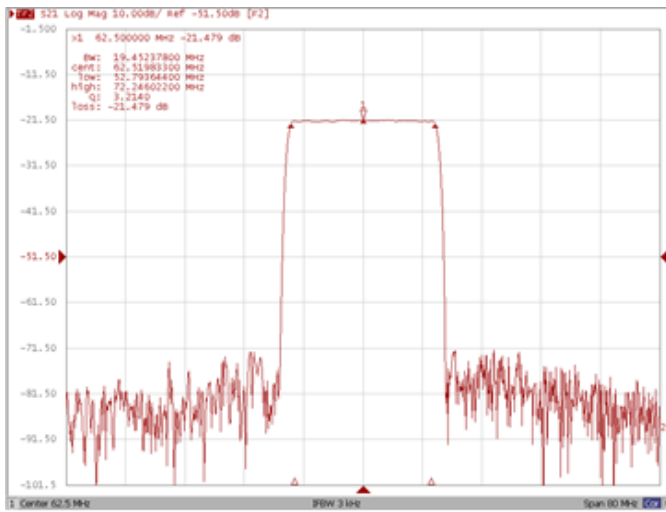


Test Fixture & Values	
Input	L1=270nH
Output	L2=220nH
Source/Load Impedance	50 Ω

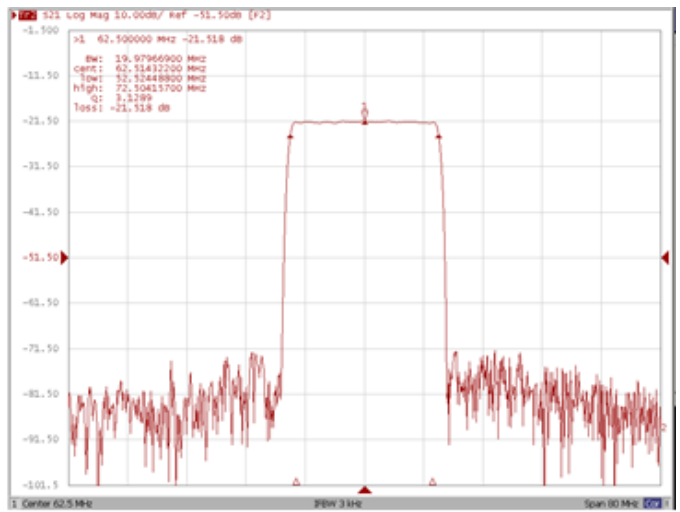
Frequency Characteristics

Frequency Response

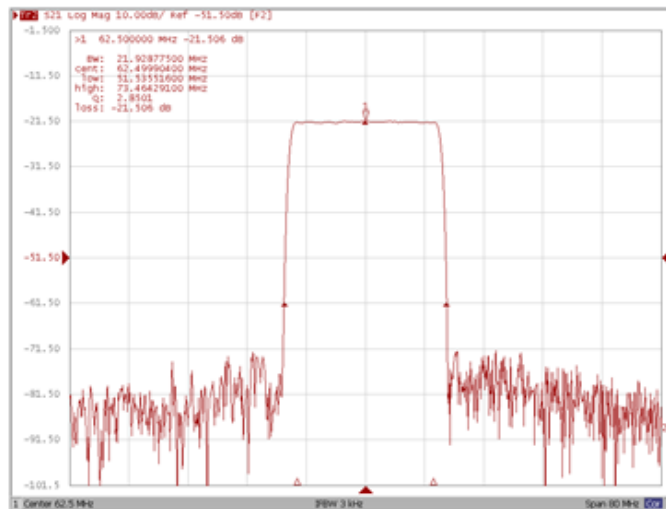
Bandwidth at -1.0 dB



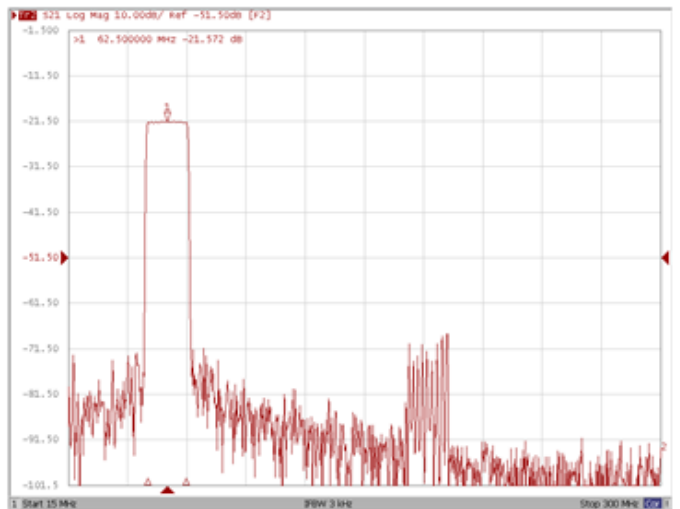
Bandwidth at -3.0 dB



Bandwidth at -40.0 dB

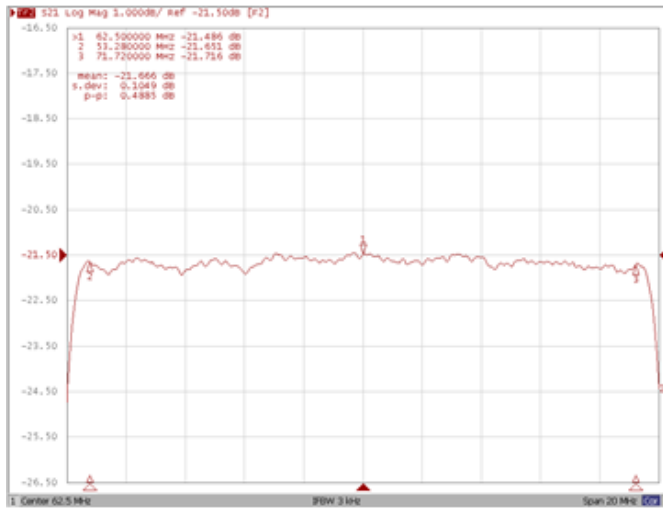


Wide Band

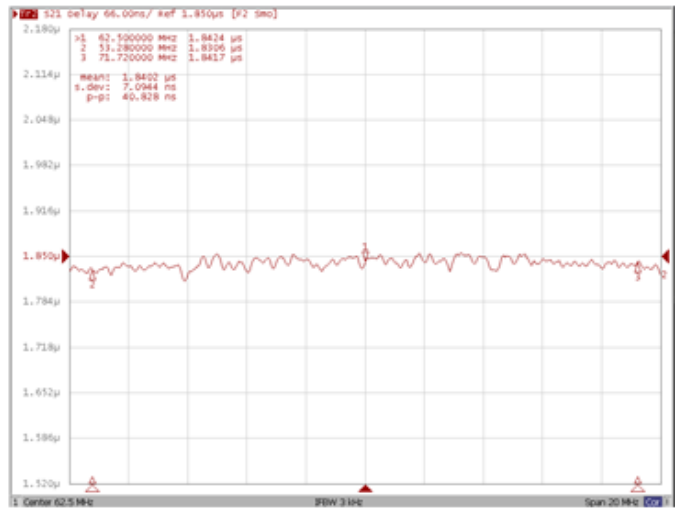


Frequency Response

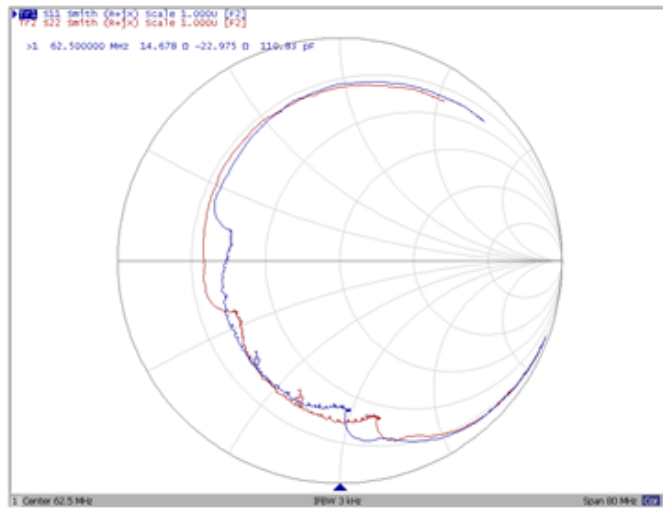
Ripple Variation



Group Delay Variation



Smith Chart



VSWR

